



Demolition Permit Application

Community and Economic Development Department – Building Services Division

BUILDING/STRUCTURE

SWIMMING POOL/SPA

Permit Information:

Date: _____
Job Address: _____
Valuation of Construction:\$ _____
Occupancy Type: _____
Construction Type: _____
Sq. Ft. of Demolition: _____
Number of buildings or dwelling units: _____

Is this permit to clear a Code Enforcement violation? Yes No

Description of Work:

(Please be detailed)

Property Owner Information:

Name: _____
Address: _____
City: _____ State: _____ Zip: _____
Phone: _____
Email: _____

Applicant Information:

- Property Owner**
(Complete and submit Owner-Builder Declaration)
 Property Owner will complete the work
 Licensed Contractor will complete the work
(Owner must provide contractor information prior to first inspection)
- Contractor**
- Authorized Agent**
(Must present company letterhead & ID)

Name: _____
Address: _____
City: _____ State: _____ Zip: _____
Phone: _____
Email: _____

Contractor Information:

License Class: _____
License Number: _____
City Business License Number: _____

(Must have a current Business License with the City of East Palo Alto, please contact the Planning Division for new licenses or Finance for renewals)

Worker's Compensation Information:

- Maintain Worker's Compensation Insurance**
Policy Number: _____
Carrier: _____
Expiration Date: _____

- Self-Insured**
- Exempt from Worker's Comp. (Sole Employee)**

Architect/Engineer:

CA License Number: _____
Expiration Date: _____
City Business License Number: _____

(Must have a current Business License with the City of East Palo Alto, please contact the Planning Division for new licenses or Finance for renewals)

Demolition Permits Checklist

Demolition permits are required for all sites where a demolition of any building, structure, and/or pool is proposed. (CBC 105.1)

All items listed below are to be complete prior to the issuance of a Demolition Permit:

1. Properly complete and submit the City of East Palo Alto Demolition Permit Application.
2. A Demolition Site Plan, four (4) sets, (Refer to the Site Plan Requirements); a digital copy is required, and may be submitted in lieu of the physical copy of the plans.
3. Imprint, on the submitted plans, the Construction Best Management Practices. To access the standard plan, please visit: <http://www.flowstobay.org/construction>
4. Show all on-site trees and indicate species and diameter. Specify whether trees will be removed or retained. A tree removal permit may be required, please contact the Planning Division for tree removal requirements (650) 853-3189.
5. The applicant shall check if the project site was identified as a historical significant per the City's 1994 Historical Resources Inventory at <http://www.ci.east-palo-alto.ca.us/DocumentCenter/View/830>. If so, please contact with Planning Division @ (650) 853-3189, prior to submittal of any demolition permits.
6. Provide a Termination/Disconnect letter from the Utility Suppliers confirming that the gas and electrical services have been terminated at the main/street. Contact PG&E: 800-743-5000
7. Provide a clearance letter of from Bay Area Air Quality Management District, (BAAQMD www.baaqmd.gov @ (415)-749-4762) or documentation that an approval is not required.
8. Properly complete and submit the EPA Construction and Demolition Recycling Diversion form. <http://www.cityofepa.org/ArchiveCenter/ViewFile/Item/359>
9. Properly complete and submit the PCBs Screening Assessment Form.
10. The contractor must have a valid/current City business license and a valid/current C-21 license.
11. Work conducted on the public right-of-way may not be done without an Encroachment Permit from the Public Works Division.

C&D Waste Diversion Application

All construction, demolition, and renovation projects requiring a building permit are required to complete a **C&D Recycling Plan** and **C&D Recycling Report** showing that 65% of material generated will be recycled or reused in compliance with local and state law.

Recycling services in East Palo Alto are provided by Recology of San Mateo County.

Please check ONE to describe your disposal plan:

- I will use a Recology debris bin.** Submit a C&D Recycling Plan to the City prior to demolition or construction. The Recology debris bin work order number must be included in the Plan. Contact Recology: (650) 595-3900 to order the debris bin and receive a work order number. Recyclable C&D materials shall be separated from waste. Any C&D recycling load that is rejected at the landfill for containing more than 50% non-recyclable waste will delay final inspection and may result in a fine. A C&D Recycling Report must be submitted to the City Building Division prior to final inspection.
- I will haul debris myself and track my own weight tickets. Weight Tags of all material recycled and disposed** must be submitted with the C&D Recycling Report in order to receive a final building inspection.

_____ (Initial) I understand that the **C&D Recycling Report** is required **before** the Building Department will schedule a final inspection.

Signature: _____ Date: _____

Name (printed): _____ Title: _____

Phone: _____ Email: _____

Project Address: _____

C&D Recycling Plan

THIS PLAN MUST BE SUBMITTED WITH THE PERMIT APPLICATION.

All projects must recycle at least 65% of the material generated. Permit applicants are required to complete the following C&D Recycling Plan before demolition or construction.

Project Type: New Construction Demolition Renovation **Project Square Footage:** _____

Project Name: _____ **Permit #:** _____
Prepared By: _____ **Phone:** _____
Company Name: _____ **Email:** _____
Company Address: _____

A. Material to Recycle or Reuse. The facility to which the materials will be hauled should be chosen from the attached list of facilities below (Recycling Resources). Check all boxes that apply for each material type . This is your **plan** – you can make changes on your final **report**.

MATERIAL	SALVAE OR REUSE	RECYCLE	DISPOSAL	DESTINATION FACILITY <small>(indicate "by Recology" or provide name of facility for self-haul)</small>
Mixed C&D Debris				
Asphalt & Concrete				
Brick / Masonry / Tile				
Cabinets, Doors, Fixtures, Windows				
Carpet				
Carpet Padding / Foam				
Cardboard				
Ceiling Tile (acoustic)				
Dirt / Sod				
Drywall (unpainted)				
Landscape Debris				
Metals				
Roofing Materials				
Wood / Lumber				
Other Material (list):				
Trash				

HAULING METHOD: Self-Haul Roll-off Box (Recology) Both

NOTE: The person who hauls the materials to a facility must be aware of the Construction and Demolition Recycling requirements and must provide the necessary information and weight tags from an approved facility.

I understand I am responsible for complying with the requirements of the East Palo Alto C&D Ordinance. I agree to submit a Final Report for this project prior to the completion of the project.

C&D Recycling Report

THIS REPORT MUST BE SUBMITTED AFTER PROJECT COMPLETION.

All projects must recycle 65% of the material generated. At the completion of the project, applicants must file this **C&D Recycling Report** to Building Safety Division noting tons recycled and landfilled by material type and the destination facility for each material type. Use tonnage information from weight tags provided by facilities to quantify total estimated waste and percentages for materials. **In order to receive a final building inspection, weight tags of all material recycled and disposed must be submitted with this report.**

Project Type: New Construction Demolition Renovation Project Square Footage: _____

Project Name: _____ **Permit #:** _____
Prepared By: _____ **Phone:** _____
Company Name: _____ **Email:** _____
Company Address: _____

Attach a copy of the C&D Recycling Plan that was submitted with the permit paperwork at the beginning of the project.

Include copies of all weight tags/disposal receipts with this report. Use cubic yard to tonnage conversion factors in right column.

MATERIAL	SALVAGE OR REUSE TONS	RECYCLE TONS	DISPOSAL TONS	DESTINATION FACILITY <small>(indicate "by Recology" or provide name of facility for self-haul)</small>	CONVERSION TONS PER CY
Mixed C&D Debris					0.25
Asphalt & Concrete					Asp: 0.69 Con: 0.93
Brick / Masonry / Tile					1.51
Cabinets, Doors, Fixtures, Windows					0.15
Carpet					0.30
Carpet Padding / Foam					0.003
Cardboard					0.05
Ceiling Tile (acoustic)					0.09
Dirt / Sod					1.00
Drywall (unpainted)					0.20
Landscape Debris					0.15
Metals					0.45
Roofing Materials					0.21
Wood / Lumber					0.15
Other Material (list):					n/a
Trash					0.18
A. Tons Recycled and Reused:		B. Tons Recycled, Reused and Disposed:		C. Diversion Rate (A/B):	

OFFICIAL USE ONLY	
Final Report	<input type="checkbox"/> Approved <input type="checkbox"/> Not Approved
By: _____ Date: _____	

RECYCLING RESOURCES

Deconstruction and Salvage Companies

Salvaging materials for reuse in their existing state is the highest and best form of recycling. The following organizations engage in salvage efforts as operators of deconstruction (as opposed to demolition) companies, salvage yards or both.

SALVAGED REUSABLE BUILDING MATERIALS	
Building Resources 701 Amador St., San Francisco www.buildingresources.org (415) 285-7814	Picks up larger loads of salvaged materials on a case-by-case basis and receives drop-off donations. Call first for information on accepted materials. Offers charitable deduction receipt for donated materials.
C&K Salvage and Allen Demolition 718 Douglas Ave. (Edes Ave.), Oakland (510) 569-2070	Performs deconstruction. Also picks up larger loads of salvaged materials on a case-by-case basis and receives drop-offs. Primarily interested in reusable lumber. Call first for information on accepted materials.
Condon & Sons 117 East 25th Ave., San Mateo (650) 349-3212	Receives materials such as single-pane aluminum windows and sliding glass doors for overseas shipment to countries in need of inexpensive building materials. Call first for information on accepted materials.
Ohmega Salvage 2400 San Pablo Ave., Berkeley www.ohmegasalvage.com (510) 204-0767	Performs limited deconstruction with a focus on higher end and older interior architectural elements and fixtures. May purchase picked up and dropped-off salvaged materials on a case-by-case basis. Call first for information on accepted materials.
Recycled Glassworks 238 Bonview St., San Francisco (415) 641-5610	Reuses ¼" or thicker, non-tempered plate glass (such as that from glass sliding doors) in the manufacture of decorative glass products. Pieces must be 10" square or larger. Will pick-up or receive drop-offs. Call for more information.
S.C.R.A.P. 801 Toland St., San Francisco www.scrap-sf.org (415) 647-1746	Accepts donations of materials such as clean wood, tile, and carpet scraps that can be re-used as art supplies by schools and other needy art and educational groups. Call for pick-up information and a complete list of accepted materials.
The Reusable Lumber Company www.reusablelumber.com (650) 529-9122	Performs deconstruction with a focus on salvaging lumber.
The Reuse People 9235 San Leandro St. Oakland www.thereusepeople.org 510-383-1983	Performs deconstruction and conducts home furnishing salvage sales. Also picks up salvaged materials on a case-by-case basis and receives drop-off donations. Call first for information on accepted materials. Offers charitable deduction receipt for donated materials.
This and That 1701 Rumrill Blvd., San Pablo www.thisandthatresuse.com (510) 232-1273	Performs deconstruction of easily removable materials. Also picks up salvaged materials on a case-by-case basis and receives drop-offs. Call first for information on accepted materials.
Urban Ore 900 Murray St., Berkeley www.Urbanore.com (510) 841-7283	Picks up extracted items through its Outside Trader department. Purchases & receives dropped-off salvaged items on a case-by-case basis. Call first for information on accepted materials.
Whole House Building Supply www.driftwoods salvage.com (650) 218-8596	Performs deconstruction and conducts home furnishing salvage sales. Also picks up salvaged materials on a case-by-case basis. Call first for information on accepted materials. Offers charitable deduction receipt for donated materials.
Craigslist www.craigslist.org	A web site that offers the ability to post and search for items for sale to prospective buyers in a local community.
Freecycle www.freecycle.org	An email list for posting items to be given away for free. It provides the ability to subscribe to local postings.
CalRecycle www.Calrecycle.ca.gov/ConDemo www.Calrecycle.ca.gov/resuse/profiles/DeConNetwork.htm	CalRecycle is a department within the California Environmental Protection Agency that administers and provides oversight for all of California's state-managed waste handling and recycling programs. Reuse and recycling listings specific to construction and demolition materials.

RECYCLING RESOURCES

Source Separated Material Recyclers

The following are facilities that accept source separated materials. Benefits of separating materials for recycling typically include:

- lower cost (tipping fee) of recycling
- higher recycling rate for your demolition or construction project
- greater number of recycling facilities
- closer proximity of recycling facilities

APPLIANCES	
Ecumenical Hunger Program 2411 Pulgas Ave., East Palo Alto (650) 323-7781	Accepts donations of working appliances that are less than 10 years old. Call for more information and to arrange for pick-up or drop-off.
Friendship Church of God in Christ 1654 E. San Antonio Street, San Jose (408) 258-5445	Accepts donations of working appliances and other reusable items. Only open on Tuesday, call for more information and to arrange for drop-off.
Rebuilding Together 1701 S. 7 th St. #10, San Jose (408) 578-9519	Accepts donations of washers and dryers less 5 years old. Also accepts most dishwashers, refrigerators, ovens and ranges (non-built-in) including hoods. Will pick up or accept drop-offs after on-site verification of reusability.
Santa Clara Appliance 948 E. Santa Clara St, San Jose (408) 289-8888	Accepts working appliances for resale or reuse. Call for more information and to arrange for pick-up or drop-off.
St. Vincent de Paul Society 749 Story Rd., San Jose 650-871-6844	Accepts drop-off of frost-free refrigerators and other appliances. No longer offers pick-up at locations south of Sunnyvale. Call for more information.
The Salvation Army www.satruck.com (800) 958-7825	Accepts most working appliances. Built-in appliances and those requiring repairs are not accepted. Call for more information and to arrange for pick-up or drop-off.



ASPHALT ROOFING SHINGLES	
Rebuilding Together 1701 S. 7 th St. #10, San Jose (408) 578-	Must drop off whole shingles, will reuse material.
Zanker Road Landfill 675 Los Esteros Road, San Jose	Obtain a "Composite Asphalt Roofing" material code or equivalent on your receipt to receive full recycling credit for your separated load. Call for more information



CARDBOARD	
Recycled Fibers 388 E. Alma Ave, San Jose	Accepts clean, recyclable cardboard. Call for more information.
SMaRT Station 301 Carl Road, Sunnyvale	Accepts separated cardboard. Call for more information

DRYWALL (clean)	
Greenwaste Recovery 625 Charles Street, San Jose (408) 283-4819	Obtain a "Drywall" or "Sheetrock" material code on your receipt to receive full recycling credit for your separated load. Call for more information.
PABCO Gypsum 37851 Cherry Street, Newark (510) 792-9555	Will accept clean PABCO scrap wallboard if contractor has an account with PABCO or a PABCO supplier. Obtain a receipt at security gate with date, tonnage, and signature of attendant. Call for more information.
Zanker Road Landfill 675 Los Esteros Road, San Jose www.Pabcogypsum.com (408) 263-2385	Obtain a "Sheetrock" material code on your receipt to receive full recycling credit for your separated load. Call for more information.

GREENWASTE	
Greenwaste Recovery 625 Charles Street, San Jose (408) 283-4819	Obtain a "Greenwaste" material code or equivalent on your receipt to receive full recycling credit for your separated load. Call for more information.
Guadalupe Landfill 15999 Guadalupe Mines Road, San Jose (408) 268-1670	Obtain a "Greenwaste" material code or equivalent on your receipt to receive full recycling credit for your separated load. Call for more information.
Newby Island Landfill 1601 Dixon Landing Road, Milpitas (408) 262-1401	Obtain a "Greenwaste" material code or equivalent on your receipt to receive full recycling credit for your separated load. Call for more information.
SMaRT Station 301 Carl Road, Sunnyvale (408) 752-8530	Obtain a "Greenwaste" material code on your receipt to receive full recycling credit for your separated load. Call for more information.
Zanker Road Landfill 675 Los Esteros Road, San Jose (408) 263-2385	Obtain a "Greenwaste" material code or equivalent on your receipt to receive full recycling credit for your separated load. Call for more information.
INERTS: CONCRETE, ASPHALT, DIRT, ROCK and BRICKS	
Granite Rock 100 Graniterock Way, San Jose (408) 574-3000	Accepts mixed or separated concrete and asphalt. Call for more information.
Greenwaste Recovery 625 Charles Street, San Jose (408) 283-4819	Accepts mixed or separated asphalt, concrete, dirt, rock and porcelain. Call for more information.
Guadalupe Landfill 15999 Guadalupe Mines Road, San Jose (408) 268-1670	Accepts separated asphalt, concrete, dirt, bricks, porcelain and rock. Call for more information.
Newby Island Landfill 1601 Dixon Landing Road, Milpitas (408) 262-1401	Accepts mixed or separated asphalt, concrete, dirt and rock. Call for more information.
Reed & Graham, Inc. 690 Sunol Street, San Jose www.rginc.com/ (408) 287-1400	Accepts asphalt grindings, asphalt with Petromat (contact for prior approval), broken asphalt from roads or parking lots, base rock, and broken cement sidewalks (contact for prior approval). Call for more information.
SRDC 11740 Berryessa Road, San Jose (408) 392-9175	Accepts mixed or separated asphalt, bricks, concrete, dirt, porcelain and rock. Call for more information.
Stevens Creek Quarry 12100 Stevens Canyon Rd, Cupertino (408) 253-2512	Accepts concrete, asphalt, dirt/soil, AC grindings, base rock and clean fill. Call for more information.
Zanker Road Landfill 675 Los Esteros Road, San Jose (408) 263-2385	Accepts mixed or separated asphalt, concrete, dirt, bricks and porcelain. Call for more information.
METAL	
Schnitzer Steel 11665 Berryessa Road, San Jose (408) 452-0777 www.schnitzersteel.com	Accepts ferrous and non-ferrous metals. Call for more information.
ECS Refining 705 Reed Street, San Jose (408) 988-4386	Accepts ferrous metal, non-ferrous metal, batteries, fluorescent tubes, ballasts, and electronic waste. Call for more information.
Sims Metal 1800 Monterey Road, San Jose (408) 494-4200	Accepts ferrous metals, non-ferrous metals (aluminum, copper, brass, stainless and alloys), insulated wire and electronic waste. Call for more information.
WOOD (untreated / unpainted)	
Guadalupe Landfill 15999 Guadalupe Mines Road, San Jose (408) 268-1670	Obtain a "Wood" material code or equivalent on your receipt to receive full recycling credit for your separated load. Call for more information.
Mission Trail Waste Systems 1060 Richard Ave., Santa Clara (408) 727-5365	Accepts mixed loads and separated wood. Call for more information.
Newby Island Landfill 1601 Dixon Landing Road, Milpitas (408) 262-1401	Obtain a "Wood" material code or equivalent on your receipt to receive full recycling credit for your separated load. Call for more information.
Zanker Road Landfill 675 Los Esteros Road, San Jose (408) 263-2385	Obtain a "Wood" material code or equivalent on your receipt to receive full recycling credit for your separated load. Call for more information.

MIXED CONSTRUCTION & DEMOLITION (C&D) DEBRIS

Mission Trail Waste Systems 1060 Richard Ave., Santa Clara (408) 727-5365	Accepts mixed construction and demolition debris and source separated loads. Call for more information.
Newby Island Landfill 1601 Dixon Landing Road, Milpitas (408) 262-1401	Accepts and sorts mixed construction and demolition debris. Obtain material code "CST-2" on your receipt. Call for more information.
San Carlos Transfer Station (BFI) 225 Shoreway Road, San Carlos (650) 592-2411	Accepts mixed construction and demolition debris and transfers to Zanker Road Landfill for sorting. Obtain material code "C&D Sort Recy" on your receipt. Call for more information.
Zanker Road Landfill 705 Los Esteros Road, San Jose (408) 263-2385	Accepts and sorts mixed construction and demolition debris. Obtain material code "Mixed Debris," "Debris Box C&D," or "Demolition" on your receipt. Call for more information.

Debris Box Companies

Recology is the City's exclusive franchised waste hauler for MIXED recycling or MIXED debris roll-off box services. Per City Code, no other roll-off box hauler may be used unless: (A) The materials are self-hauled by a State-licensed contractor, working at the site, who owns and hauls their own box or truck, and the hauling is an incidental part of total services (e.g. roofers, landscapers); or (B) The materials are sold or donated to a recycling hauler or processor, who does not require payment of any kind for the collection, transportation, transfer or processing; materials are kept source-separated on site (i.e. box of metal, box of drywall); and the hauler has *both* a City franchise and business license.

DEBRIS BOX COMPANY	PHONE NUMBER
Recology San Mateo County	(650) 595-3900

Federal and State Polychlorinated Biphenyls (“PCBs”) Regulations

Applicants that determine PCBs exist in building materials must follow applicable federal and state laws. This may include reporting to U.S. Environmental Protection Agency (USEPA), the San Francisco Bay Regional Water Quality Control Board, and the California Department of Toxic Substances Control (DTSC). These agencies may require additional sampling and abatement of PCBs, you may need to notify or seek advance approval from USEPA before building demolition. Even in circumstances where advance notification to or approval from USEPA is not required before the demolition activity, the disposal of PCBs waste is regulated under (DTSC) and the California Code of Regulations. (See Note 1)

Note 1 – Federal and State Regulations

Building materials containing PCBs at or above 50 ppm that were manufactured with PCBs (e.g., caulk, joint sealants, paint) fall under the category of PCBs bulk product wastes. See 40 Code of Federal Regulations (CFR) 761.3 for a definition of PCBs bulk product wastes.

Building materials such as concrete, brick, metal contaminated with PCBs are PCBs remediation wastes (e.g., concrete contaminated with PCBs from caulk that contains PCBs). 40 CFR 761.3 defines PCBs remediation wastes.

Disposal of PCBs wastes are subject to TSCA requirements such as manifesting of the waste for transportation and disposal. See 40 CFR 761 and 40 CFR 761, Subpart K.

TSCA-regulated does not equate solely to materials containing PCBs at or above 50 ppm. There are circumstances in which materials containing PCBs below 50 ppm are subject to regulation under TSCA. See 40 CFR 761.61(a)(5)(i)(B)(2)(ii).

Disposal of PCBs wastes are subject to California Code of Regulations (CCR) Title 22, Section Division 4.5, Chapter 12, Standards Applicable to Hazardous Waste Generators.

California hazardous waste regulatory levels for PCBs are 5 ppm based on the Soluble Threshold Limit Concentration test and 50 ppm based on the Total Threshold Limit Concentration test, see CCR, Title 22, Section 66261.24, Table III.

Agency	Contact	Useful Links
US Environmental Protection Agency	Steve Armann (415) 972-3352 armann.steve@epa.gov	https://www.epa.gov/pcbs (EPA PCBs website) https://www.epa.gov/pcbs/questions-and-answers-about-polychlorinated-biphenyls-pcbs-building-materials (PCBs in Building Materials Fact Sheet and Q/A Document) https://www.epa.gov/pcbs/pcb-facility-approval-streamlining-toolbox-fast-streamlining-cleanup-approval-process (USEPA PCB Facility Approval Streamlining Toolbox (PCB FAST)) https://www.epa.gov/pcbs/polychlorinated-biphenyls-pcbs-building-materials#Test-Methods (See Information for Contractors Working in Older Buildings that May Contain PCBs)
San Francisco Bay Regional Water Quality Control Board	Jan O'Hara (510) 622-5681 Janet.O'Hara@waterboards.ca.gov Cheryl Prowell (510) 622-2408 Cheryl.Prowell@waterboards.ca.gov	https://www.waterboards.ca.gov/sanfranciscobay/water_issues/programs/TMDLs/sfbaypcbstmdl.shtml https://www.waterboards.ca.gov/sanfranciscobay/water_issues/programs/sitecleanupprogram.html
Department of Toxic Substances Control	Regulatory Assistance Office 1-800-72TOXIC RAO@dtsc.ca.gov	http://www.dtsc.ca.gov/SiteCleanup/Brownfields/upload/PUB_SMP_Guide-to-Selecting-a-Consultant.pdf
California Division of Occupational Safety and Health (Cal/OSHA)	CalOSHA Consultations Services 1-800-963-9424	https://www.dir.ca.gov/dosh/consultation.html

Process Overview

This document provides a model PCBs in Priority Building Materials Screening Assessment process to be conducted by applicants. A flow chart illustrating the below processes is provided below.

Applicants proposing to demolish buildings must conduct the PCBs screening assessment. Through the PCBs screening assessment applicants will:

- 1) Determine whether the building proposed for demolition is likely to have PCBs containing building materials (see discussion of applicable structure); and,
- 2) Determine whether PCBs are present at a concentration equal to or greater than 50 parts per million (“ppm”) in building materials.

Use the **PCBs Screening Assessment Form** to summarize and certify the information required by the municipality to issue the demolition permit. The form is divided into four parts:

- **Part 1** - provide applicant information and project location.
- **Part 2** complete the questions to identify whether the project involves an applicable structure. If the demolition does not involve an applicable structure, the form may be certified and submitted without completing Part 3.

Water quality within the San Francisco Bay Region is regulated by the San Francisco Bay Area Regional Water Quality Control Board (Regional Water Board).

In 2015, the Regional Water Board reissued the Municipal Regional Permit (MRP)¹ that regulates discharges of stormwater runoff. The MRP includes provisions for reducing discharges of polychlorinated biphenyls (PCBs) in stormwater runoff and requires municipalities to develop a program to manage priority PCBs—containing building materials during demolition and implement the program by July 1, 2019.

Existing federal and state regulations create the framework for managing PCBs in building materials once those PCBs are identified through this program and for disposing of wastes containing PCBs.

- **Part 3** complete the questions to provide the concentrations of PCBs in any priority building materials.
- **Part 4** certify the information being submitted.

Note that fluorescent light ballasts, polyurethane foam furniture, and Askarel fluid used in transformers, all of which may contain PCBs, are typically managed during pre-demolition activities under current regulations and programs that require removal of universal waste and outdated transformers. For this process it is assumed that those materials will be evaluated and managed under those existing programs.

This screening process is part of a program for water quality protection and was designed in accordance with requirements in the Municipal Regional Permit (“MRP”)¹. It does not address other environmental programs or regulations (e.g., PCBs regulations under the Toxic Substances Control Act (TSCA); federal, state, or local regulations for hazardous material handling and hazardous waste disposal; health and safety practices to mitigate human exposure to PCBs or other hazardous materials; recycling mandates; or abatement at sites with PCBs (or other contaminants).

¹ A National Pollutant Discharge Elimination System (NPDES) permit, Order No. R2-2015-0049, issued to municipalities in the counties of Alameda, Contra Costa, San Mateo, and Santa Clara, and the Cities of Fairfield, Suisun City, and Vallejo.

PCBs Screening Assessment Form

For Municipality Use Only

Date Received

File #

Complete all applicable parts of the PCBs Screening Assessment Form and submit with your demolition permit application.

All applicants must complete Part 1 and Part 2.

Part 1. Owner/Consultant and project information

Owner Information

Name

Address

City

State

Zip

Contact (Agent)

Phone

Email

Consultant Information

Firm Name

Address

City

State

Zip

Contact Person

Phone

Email

Project Location

Address

City

State CA

Zip

APN (s)

Year Building was Built

Type of Construction

Estimated Demolition Date

Part 2. Is building subject to the PCBs screening requirement based on type, use, and age of the building?

2.a Is the building to be demolished wood framed and/or single family residential?

Yes

No

If the answer to question 2.a is **Yes**, the PCBs Screening Assessment is complete, skip to Part 4. If the answer is **No**, continue to Question 2.b.

2.b Was the building to be demolished constructed or remodeled between January 1, 1950 and December 31, 1980? Yes No

➤ If the answer to Question 2.b is **No** the PCBs Screening Assessment is complete, skip to Part 4. If the answer is **Yes**, continue to Question 2.c.

2.c Is the proposed demolition a complete demolition of the building? Yes No

➤ If the answer to Question 2.c is **No** the PCBs Screening Assessment is complete, skip to Part 4. If the answer is **Yes**, complete Part 3.

All applications affecting applicable structures and demolitions must complete Part 3.

Part 3. Report concentrations of PCBs in priority building materials

Option 1. Applicants conducted representative sampling and analysis of the priority building materials per the Protocol for Evaluating Priority PCBs-Containing Materials before Building Demolition (2018) (Link: <https://www.flowstobay.org/sites/default/files/applicant-pkg-pcbs-demo-final-8-26-2018.pdf>).

Option 2. Applicants possess existing sample results that are that are consistent with the Protocol for Evaluating Priority PCBs-Containing Materials before Building Demolition (2018) (Link: <https://www.flowstobay.org/sites/default/files/applicant-pkg-pcbs-demo-final-8-26-2018.pdf>).

3.a Select option and report PCBs concentrations in the priority building materials and the source of data for each of the priority building materials. Provide the required supporting information

- Option 1 Conduct Representative Sampling
- Summarize results on Part 3 Tables; and
 - Provide the following supporting information:
 - Contractor's report documenting the assessment results;
 - QA/QC checklist (see Attachment C, section 3.2.4); and
 - Copies of the analytical data reports.

- Option 2 Use Existing Sampling Records
- Summarize results on Part 3 Tables; and
 - Provide the following supporting information:
 - Contractor's report/statement that the results are consistent with the Protocol for Evaluating Priority PCBs-Containing Materials before Building Demolition.
 - Copies of the analytical data reports.

All Applicants must complete Part 4.

Part 4. Certification

I certify that the information provided in this form is, to the best of my knowledge and belief, true, accurate, and complete. I further certify that I understand my responsibility for knowing and complying with all relevant laws and regulations related to reporting, abating, and handing and disposing of PCBs materials and wastes. I understand there are significant penalties for submitting false information. I will retain a copy of this form and the supporting documentation for at least 5 years.

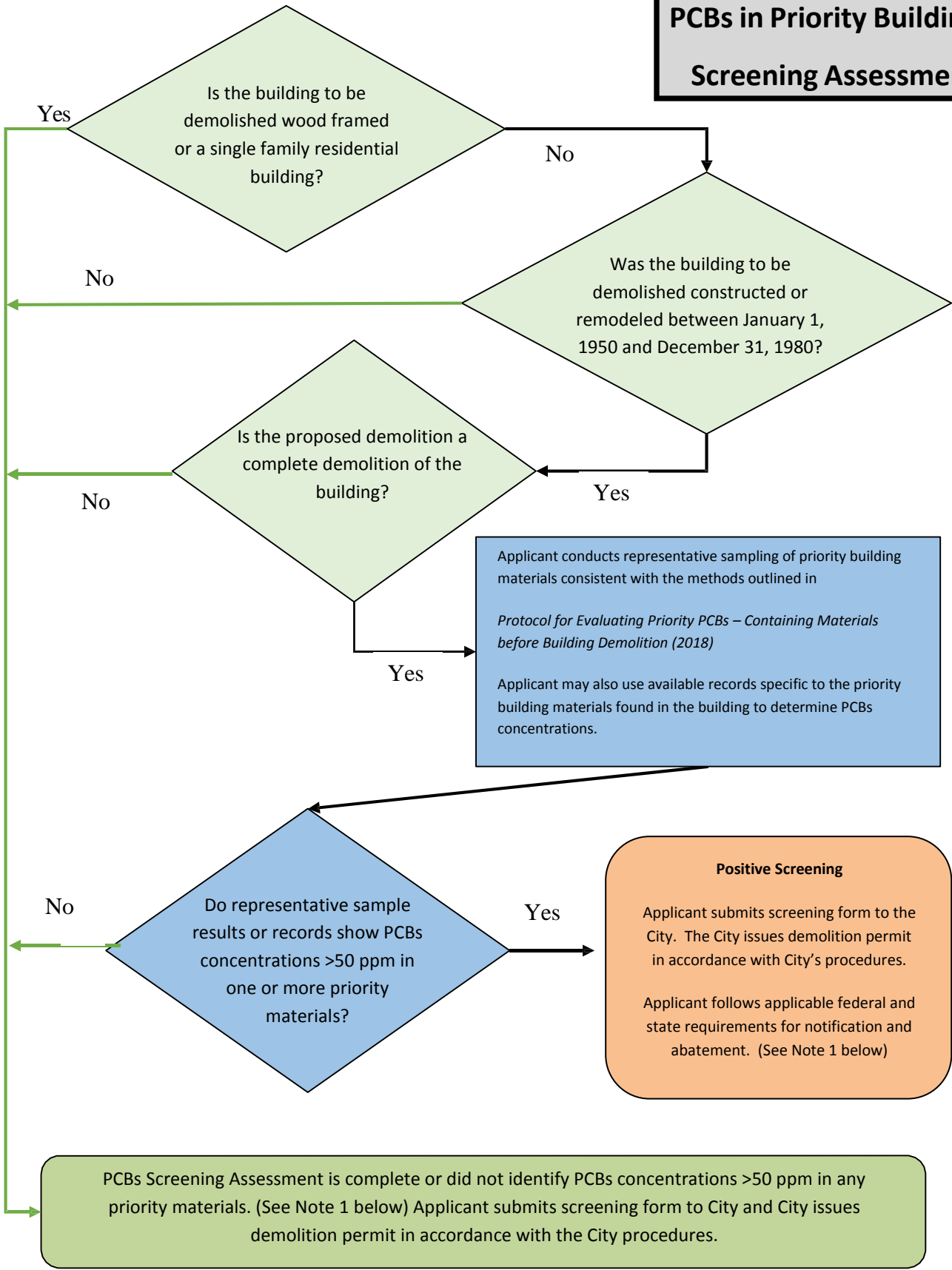
Signature: _____ Date: _____
(Property Owner//Agent/Legal Representative)

Print/Type: _____
(Property Owner/Agent/Legal Representative Name)

Signature: _____ Date: _____
(Consultant Completing Application Form)

Print/Type: _____
(Consultant Completing Application Form)

PCBs in Priority Building Materials Screening Assessment Process



Note 1

- ❖ Building materials containing PCBs at or above 50 ppm that were manufactured with PCBs (e.g., caulk, joint sealants, paint) fall under the category of PCBs bulk product wastes. See 40 Code of Federal Regulations (CFR) 761.3 for a definition of PCBs bulk product wastes.
- ❖ Building materials such as concrete, brick or metal contaminated with PCBs are PCBs remediation wastes (e.g., concrete contaminated with PCBs from caulk that contains PCBs). 40 CFR 761.3 defines PCBs remediation wastes.
- ❖ Disposal of PCBs wastes are subject to TSCA requirements such as manifesting of the waste for transportation and disposal. See 40 CFR 761 and 40 CFR 761, Subpart K.
- ❖ TSCA-regulated does not equate solely to “materials containing PCBs at or above “50 mg/kg.” There are circumstances in which materials containing PCBs below 50 mg/kg are subject to regulation under TSCA. See 40 CFR 761.61(a)(5)(i)(B)(2)(ii).
- ❖ Disposal of PCBs wastes are subject to California Code of Regulations (CCR) Title 22, Section Division 4.5, Chapter 12, Standards Applicable to Hazardous Waste Generators.
- ❖ California hazardous waste regulatory levels for PCBs are 5 ppm based on the Soluble Threshold Limit Concentration test and 50 ppm based on the Total Threshold Limit Concentration test, see CCR, Title 22, Section 66261.24, Table III.