

FLOOD HAZARD INFORMATION

SEE FIS REPORT FOR DETAILED LEGEND AND INDEX MAP FOR FIRM PANEL LAYOUT
THE INFORMATION DEPICTED ON THIS MAP AND SUPPORTING DOCUMENTATION ARE ALSO AVAILABLE IN DIGITAL FORMAT AT [HTTP://MSC.FEMA.GOV](http://msc.fema.gov)

SPECIAL FLOOD HAZARD AREAS		Without Base Flood Elevation (BFE) Zone A, V, A99
		With BFE or Depth Zone AE, AO, AH, VE, AR Regulatory Floodway
OTHER AREAS OF FLOOD HAZARD		0.2% Annual Chance Flood Hazard, Areas of 1% annual chance flood with average depth less than one foot or with drainage areas of less than one square mile Zone X
		Future Conditions 1% Annual Chance Flood Hazard Zone X
		Area with Reduced Flood Risk due to Levee See Notes Zone X
OTHER AREAS		Areas of Minimal Flood Hazard Zone X
		Area of Undetermined Flood Hazard Zone D
GENERAL STRUCTURES		Channel, Culvert or Storm Sewer
		Accredited or Provisionally Accredited Levee, Dike or Floodwall
		Non-accredited Levee, Dike or Floodwall
		18.2 Cross Sections with 1% Annual Chance Water Surface Elevation (BFE)
		17.5 Cross Sections with 1% Annual Chance Water Surface Elevation (BFE)
		Coastal Transect
		Coastal Transect Baseline
		Profile Baseline
		Hydrographic Feature
OTHER FEATURES		Base Flood Elevation Line (BFE)
		Limit of Study
		Jurisdiction Boundary

NOTES TO USERS

For information and questions about this map, available products associated with this FIRM including historic versions of this FIRM, how to order products or the National Flood Insurance Program in general, please call the FEMA Map Information eXchange at 1-877-FEMA-MAP (1-877-338-2627) or visit the FEMA Map Service Center website at <http://msc.fema.gov>. Available products may include previously issued Letters of Map Change, a Flood Insurance Study Report, and/or digital versions of this map. Many of these products can be ordered or obtained directly from the website. Users may determine the current map date for each FIRM panel by visiting the FEMA Map Service Center website or by calling the FEMA Map Information eXchange.

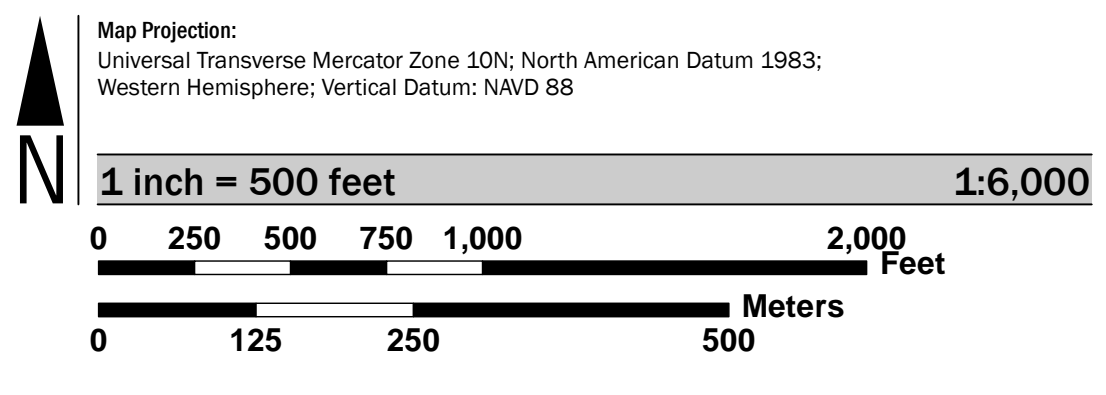
Communities annexing land on adjacent FIRM panels must obtain a current copy of the adjacent panel as well as the current FIRM index. These may be ordered directly from the Map Service Center at the number listed above.

For community and countywide map dates refer to the Flood Insurance Study report for this jurisdiction.

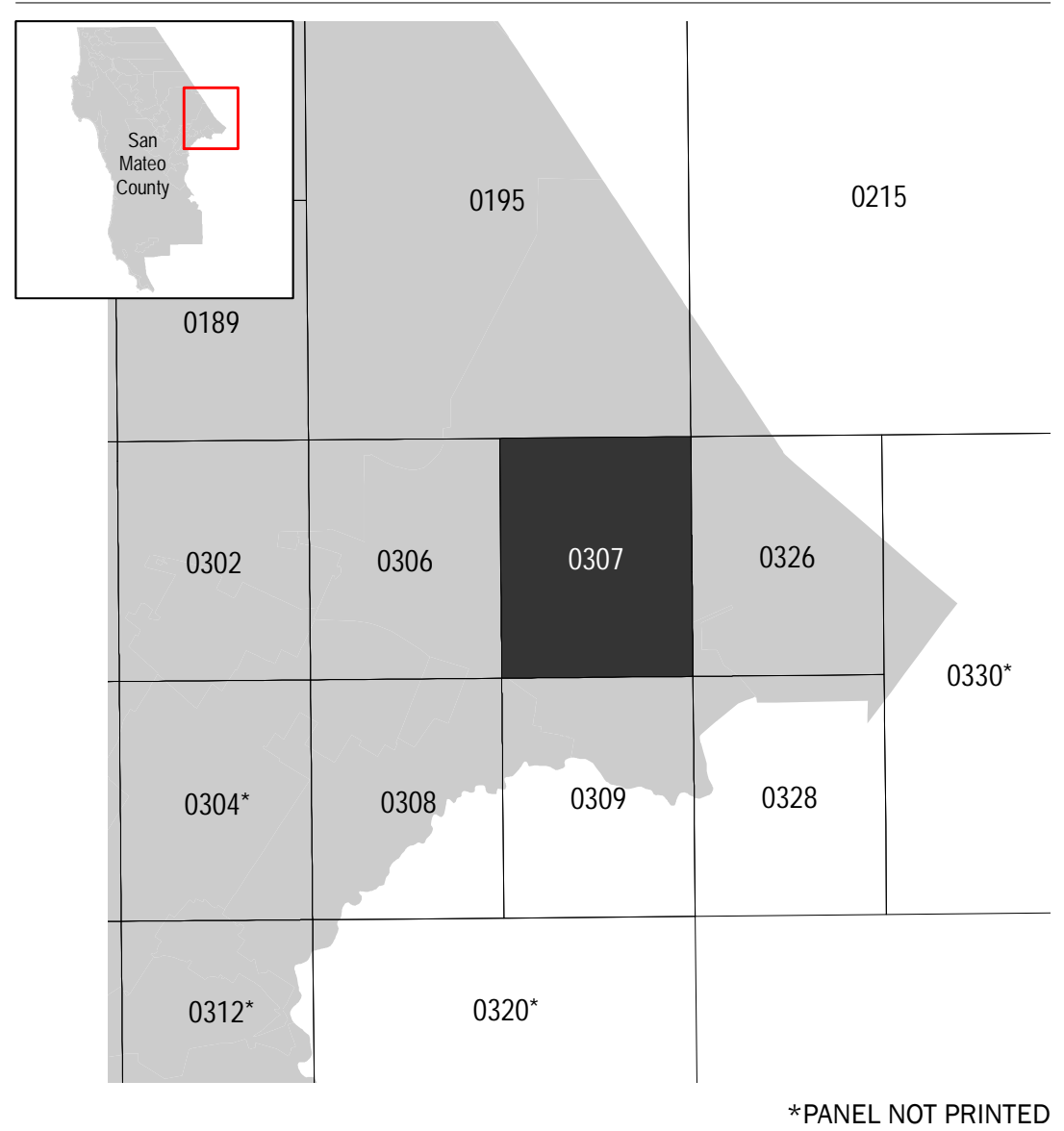
To determine if flood insurance is available in this community, contact your Insurance agent or call the National Flood Insurance Program at 1-800-638-6620.

Base map information shown on this FIRM was derived from USGS LIDAR dated 2010 and Coastal California digital imagery dated 2011. USDA NAIP imagery dated 2012 is used in areas not covered by the Coastal California digital imagery.

SCALE



PANEL LOCATOR



National Flood Insurance Program

NATIONAL FLOOD INSURANCE PROGRAM
FLOOD INSURANCE RATE MAP

SAN MATEO COUNTY, CALIFORNIA
 and Incorporated Areas

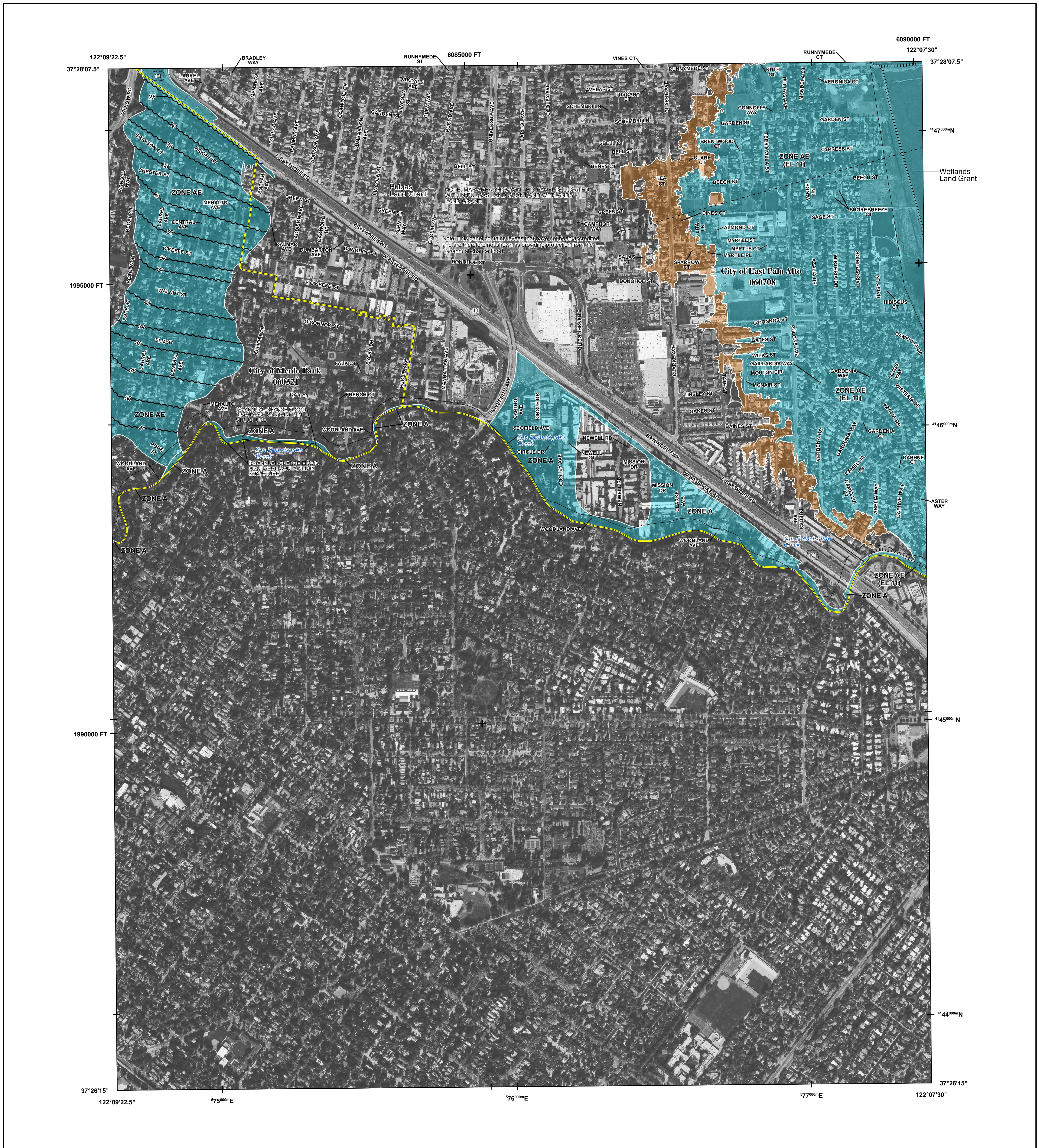
PANEL 307 OF 510

Panel Contains:
 COMMUNITY EAST PALO ALTO, CITY OF MENLO PARK, CITY OF
 NUMBER 060708
 PANEL 0307
 SUFFIX F

FEMA

PRELIMINARY
8/13/2015

VERSION NUMBER 2.3.2.0
 MAP NUMBER 06081C0307F
 MAP REVISED



FLOOD HAZARD INFORMATION

SEE FIS REPORT FOR DETAILED LEGEND AND INDEX MAP FOR FIRM PANEL LAYOUT
THE INFORMATION DEPICTED ON THIS MAP AND SUPPORTING DOCUMENTATION ARE ALSO AVAILABLE IN DIGITAL FORMAT AT [HTTP://MSC.FEMA.GOV](http://msc.fema.gov)

SPECIAL FLOOD HAZARD AREAS		Without Base Flood Elevation (BFE) Zone A, V, A99
		With BFE or Depth Zone AE, AO, AH, VE, AR Regulatory Floodway
OTHER AREAS OF FLOOD HAZARD		0.2% Annual Chance Flood Hazard, Areas of 1% annual chance flood with average depth less than one foot or with drainage areas of less than one square mile Zone X
		Future Conditions 1% Annual Chance Flood Hazard Zone X
		Area with Reduced Flood Risk due to Levee See Notes Zone X
OTHER AREAS		Areas of Minimal Flood Hazard Zone X
		Area of Undetermined Flood Hazard Zone D
GENERAL STRUCTURES		Channel, Culvert or Storm Sewer
		Accredited or Provisionally Accredited Levee, Dike or Floodwall
		Non-accredited Levee, Dike or Floodwall
		18.2 17.5 Cross Sections with 1% Annual Chance Water Surface Elevation (BFE)
		Coastal Transect
		Coastal Transect Baseline
		Profile Baseline
		Hydrographic Feature
OTHER FEATURES		Base Flood Elevation Line (BFE)
		Limit of Study
		Jurisdiction Boundary

NOTES TO USERS

For information and questions about this map, available products associated with this FIRM including historic versions of this FIRM, how to order products or the National Flood Insurance Program in general, please call the FEMA Map Information eXchange at 1-877-FEMA-MAP (1-877-336-2627) or visit the FEMA Map Service Center website at <http://msc.fema.gov>. Available products may include previously issued Letters of Map Change, a Flood Insurance Study Report, and/or digital versions of this map. Many of these products can be ordered or obtained directly from the website. Users may determine the current map date for each FIRM panel by visiting the FEMA Map Service Center website or by calling the FEMA Map Information eXchange.

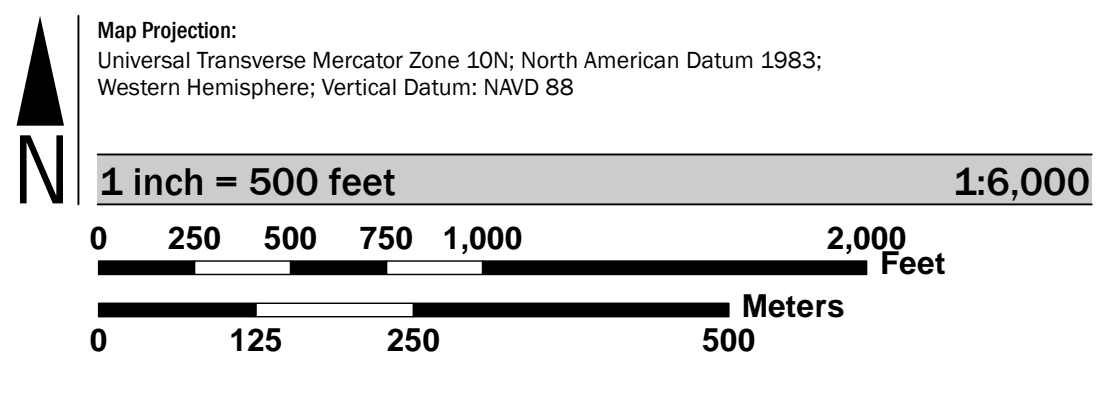
Communities annexing land on adjacent FIRM panels must obtain a current copy of the adjacent panel as well as the current FIRM index. These may be ordered directly from the Map Service Center at the number listed above.

For community and countywide map dates refer to the Flood Insurance Study report for this jurisdiction.

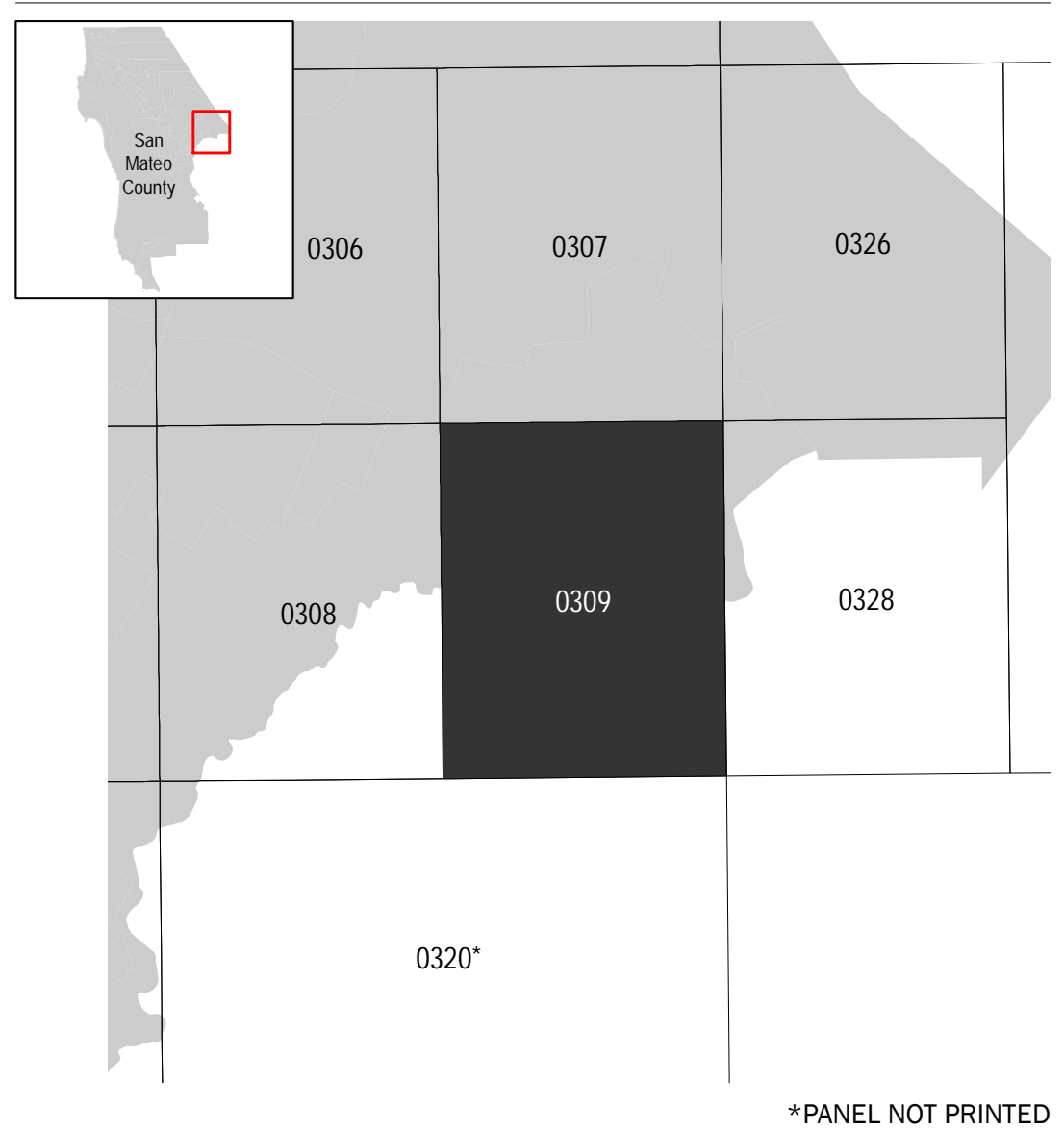
To determine if flood insurance is available in this community, contact your Insurance agent or call the National Flood Insurance Program at 1-800-638-6620.

Base map information shown on this FIRM was derived from USGS LIDAR dated 2010 and Coastal California digital imagery dated 2011. USDA NAIP imagery dated 2012 is used in areas not covered by the Coastal California digital imagery.

SCALE



PANEL LOCATOR



National Flood Insurance Program

NATIONAL FLOOD INSURANCE PROGRAM
FLOOD INSURANCE RATE MAP
SAN MATEO COUNTY, CALIFORNIA
 and Incorporated Areas
PANEL 309 OF 510

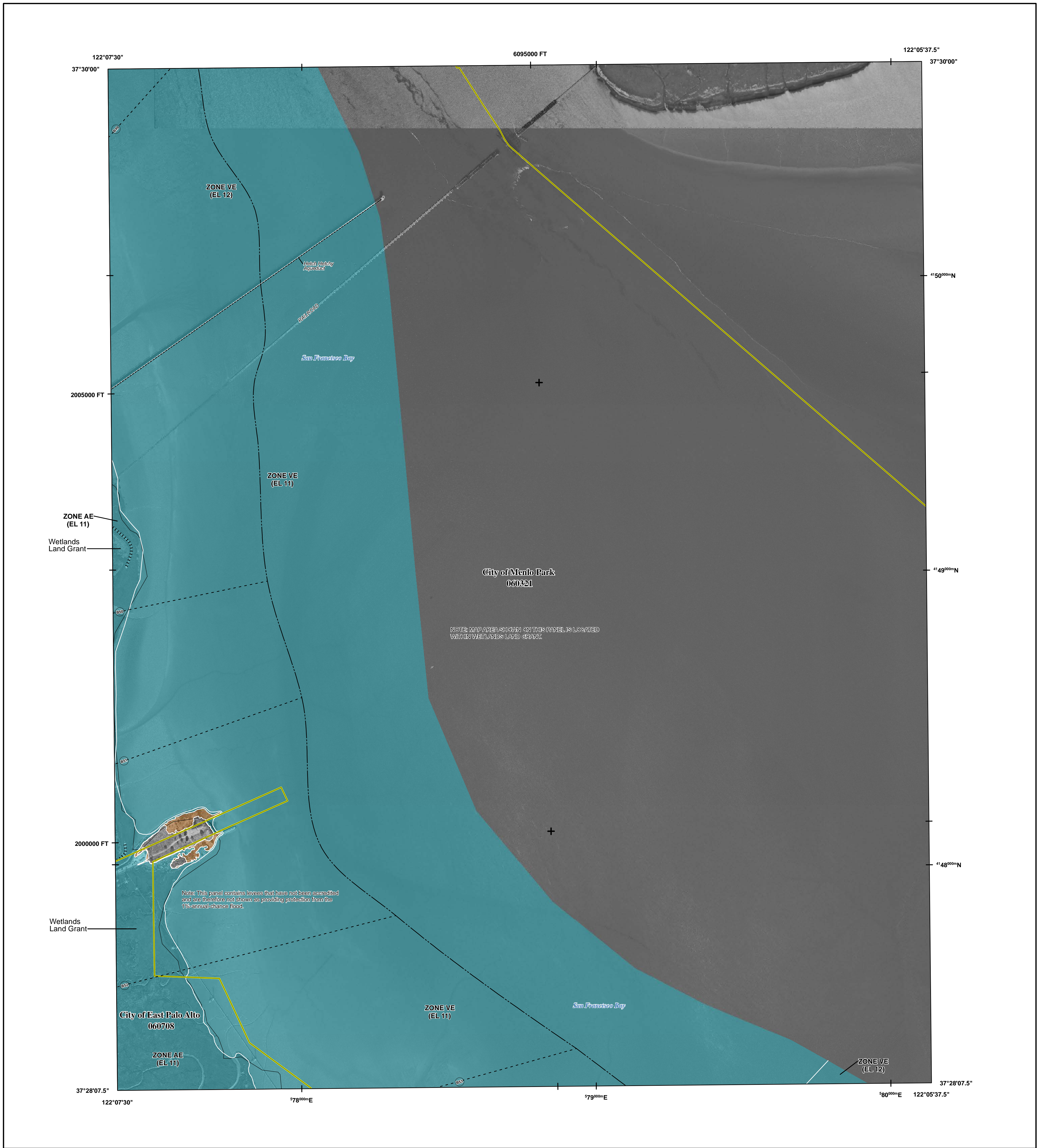
FEMA

Panel Contains:

COMMUNITY	NUMBER	PANEL	SUFFIX
EAST PALO ALTO, CITY OF MENLO PARK, CITY OF	060708 060321	0309	F F

PRELIMINARY
8/13/2015

VERSION NUMBER
2.3.2.0
 MAP NUMBER
06081C0309F
 MAP REVISED



FLOOD HAZARD INFORMATION

SEE FIS REPORT FOR DETAILED LEGEND AND INDEX MAP FOR FIRM PANEL LAYOUT
THE INFORMATION DEPICTED ON THIS MAP AND SUPPORTING DOCUMENTATION ARE ALSO AVAILABLE IN DIGITAL FORMAT AT [HTTP://MSC.FEMA.GOV](http://msc.fema.gov)

SPECIAL FLOOD HAZARD AREAS		Without Base Flood Elevation (BFE) Zone A, V, A99
		With BFE or Depth Zone AE, AO, AH, VE, AR
		Regulatory Floodway
OTHER AREAS OF FLOOD HAZARD		0.2% Annual Chance Flood Hazard, Areas of 1% annual chance flood with average depth less than one foot or with drainage areas of less than one square mile Zone X
		Future Conditions 1% Annual Chance Flood Hazard Zone X
		Area with Reduced Flood Risk due to Levee See Notes Zone X
OTHER AREAS		Areas of Minimal Flood Hazard Zone X
		Area of Undetermined Flood Hazard Zone D
GENERAL STRUCTURES		Channel, Culvert or Storm Sewer
		Accredited or Provisionally Accredited Levee, Dike or Floodwall
		Non-accredited Levee, Dike or Floodwall
		Cross Sections with 1% Annual Chance Water Surface Elevation (BFE) 18.2 17.5
		Coastal Transect
		Coastal Transect Baseline
		Profile Baseline
		Hydrographic Feature
OTHER FEATURES		Base Flood Elevation Line (BFE)
		Limit of Study
		Jurisdiction Boundary

NOTES TO USERS

For information and questions about this map, available products associated with this FIRM including historic versions of this FIRM, how to order products or the National Flood Insurance Program in general, please call the FEMA Map Information eXchange at 1-877-FEMA-MAP (1-877-336-2627) or visit the FEMA Map Service Center website at <http://msc.fema.gov>. Available products may include previously issued Letters of Map Change, a Flood Insurance Study Report, and/or digital versions of this map. Many of these products can be ordered or obtained directly from the website. Users may determine the current map date for each FIRM panel by visiting the FEMA Map Service Center website or by calling the FEMA Map Information eXchange.

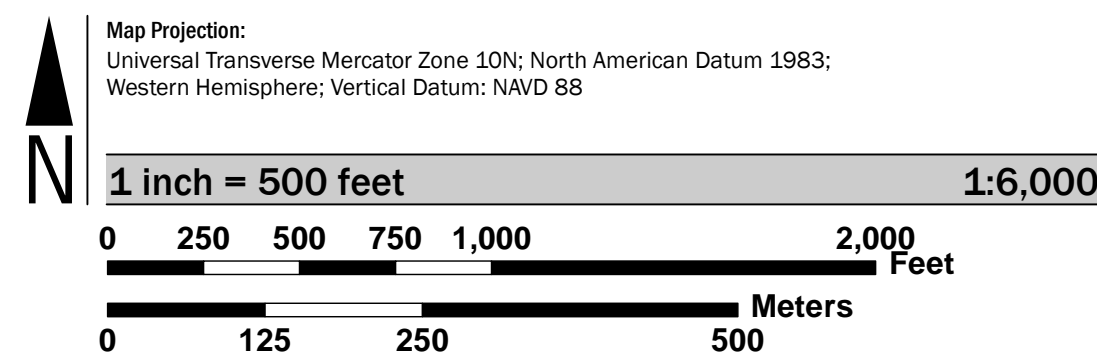
Communities annexing land on adjacent FIRM panels must obtain a current copy of the adjacent panel as well as the current FIRM index. These may be ordered directly from the Map Service Center at the number listed above.

For community and countywide map dates refer to the Flood Insurance Study report for this jurisdiction.

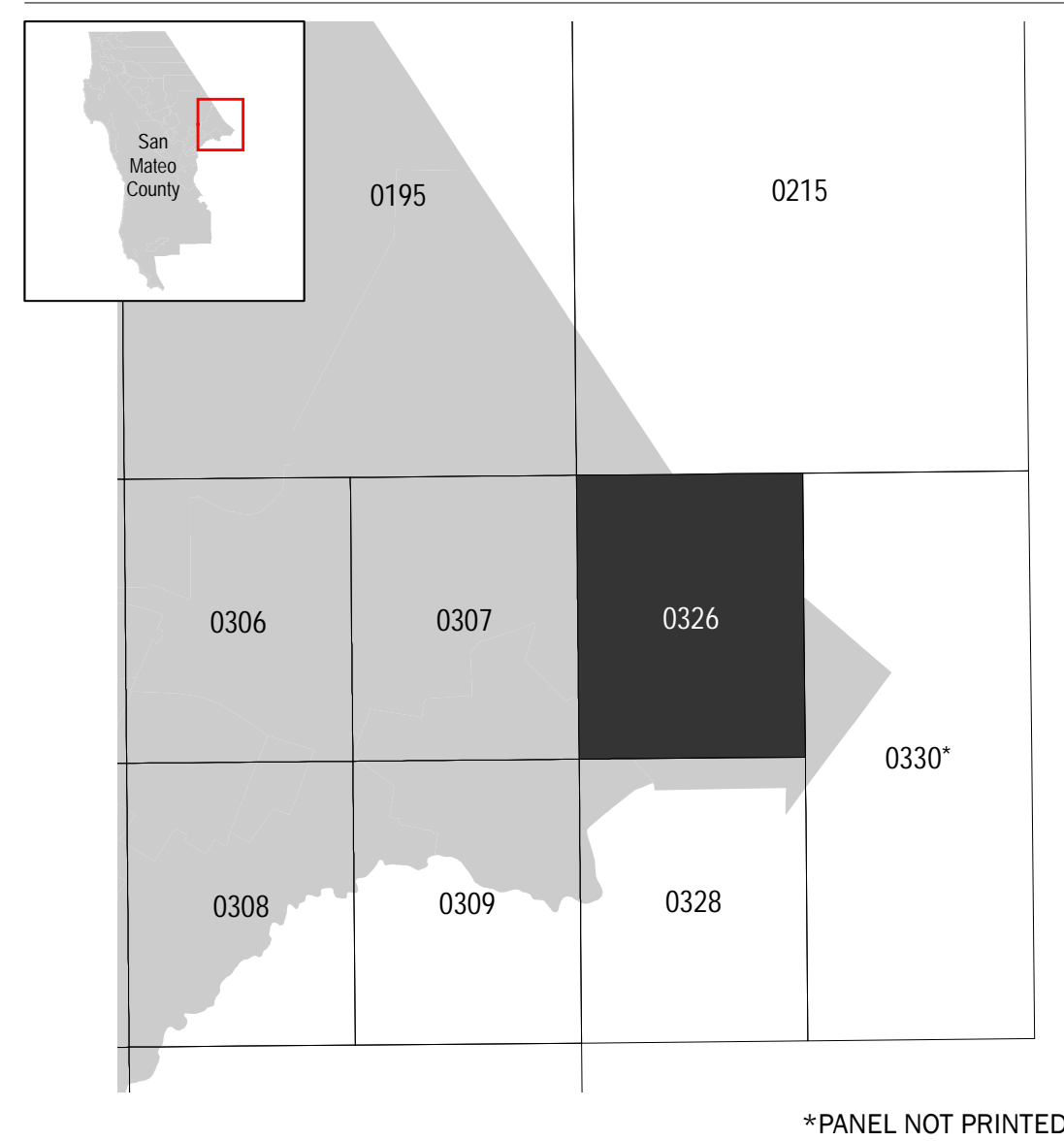
To determine if flood insurance is available in this community, contact your Insurance agent or call the National Flood Insurance Program at 1-800-638-6620.

Base map information shown on this FIRM was derived from USGS LIDAR dated 2010 and Coastal California digital imagery dated 2011. USDA NAIP imagery dated 2012 is used in areas not covered by the Coastal California digital imagery.

SCALE



PANEL LOCATOR



National Flood Insurance Program

NATIONAL FLOOD INSURANCE PROGRAM
FLOOD INSURANCE RATE MAP
SAN MATEO COUNTY, CALIFORNIA
 and Incorporated Areas
PANEL 326 OF 510

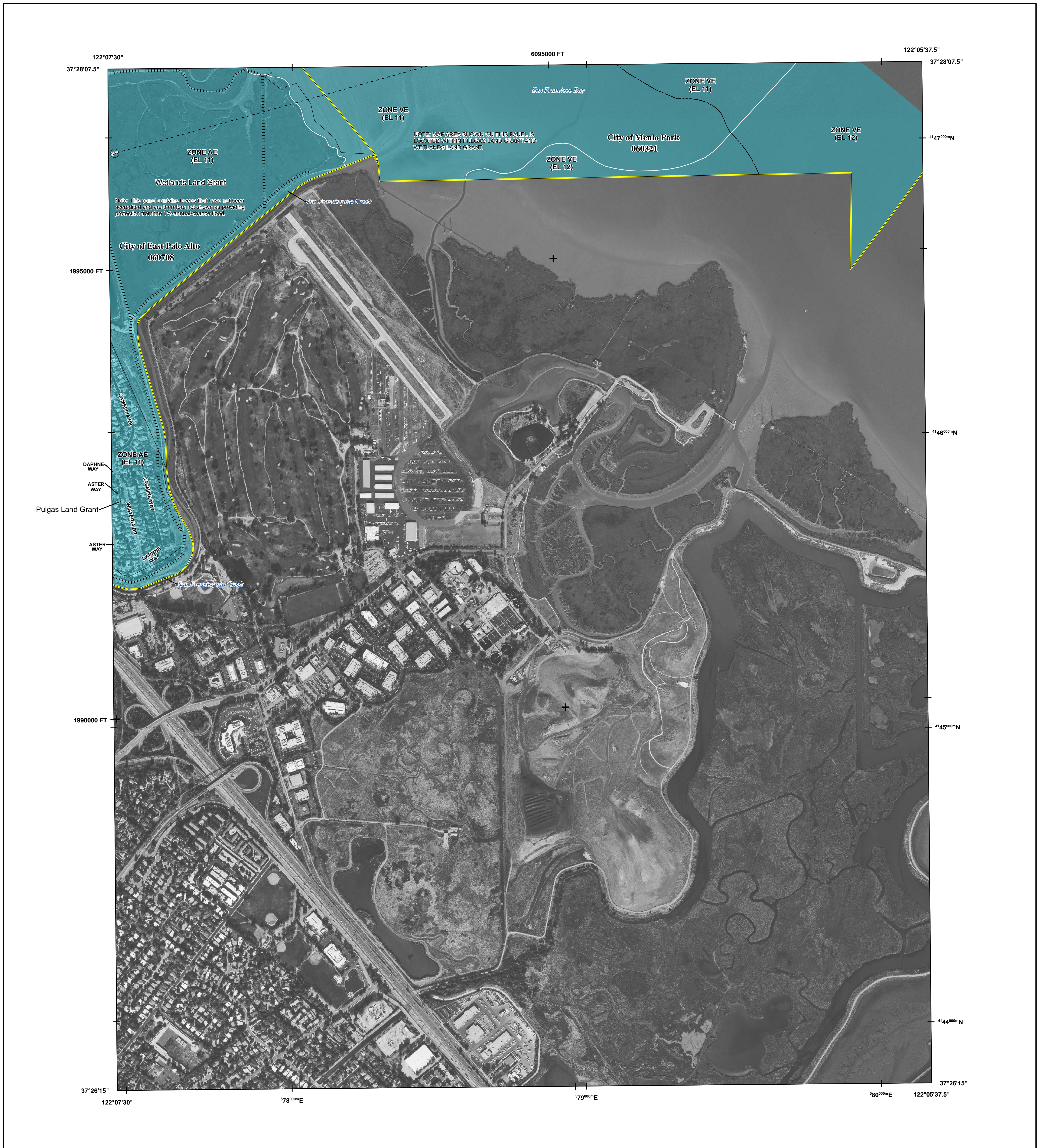
Panel Contains:
COMMUNITY
 EAST PALO ALTO, CITY OF
 MENLO PARK, CITY OF

NUMBER	PANEL	SUFFIX
060708	0326	F
060321	0326	F

FEMA

PRELIMINARY
8/13/2015

VERSION NUMBER
2.3.2.0
 MAP NUMBER
06081C0326F
 MAP REVISED



FLOOD HAZARD INFORMATION

SEE FIS REPORT FOR DETAILED LEGEND AND INDEX MAP FOR FIRM PANEL LAYOUT
THE INFORMATION DEPICTED ON THIS MAP AND SUPPORTING DOCUMENTATION ARE ALSO AVAILABLE IN DIGITAL FORMAT AT [HTTP://MSC.FEMA.GOV](http://msc.fema.gov)

SPECIAL FLOOD HAZARD AREAS		Without Base Flood Elevation (BFE) Zone A, V, A99
		With BFE or Depth Zone AE, AO, AH, VE, AR Regulatory Floodway
OTHER AREAS OF FLOOD HAZARD		0.2% Annual Chance Flood Hazard, Areas of 1% annual chance flood with average depth less than one foot or with drainage areas of less than one square mile Zone X
		Future Conditions 1% Annual Chance Flood Hazard Zone X
OTHER AREAS		Area with Reduced Flood Risk due to Levee See Notes Zone X
		NO SCREEN
GENERAL STRUCTURES		Channel, Culvert or Storm Sewer
		Accredited or Provisionally Accredited Levee, Dike or Floodwall
OTHER FEATURES		Non-accredited Levee, Dike or Floodwall
		Cross Sections with 1% Annual Chance Water Surface Elevation (BFE) 18.2 17.5
		Coastal Transect
		Coastal Transect Baseline
		Profile Baseline
		Hydrographic Feature
		Base Flood Elevation Line (BFE) 513
		Limit of Study
		Jurisdiction Boundary

NOTES TO USERS

For information and questions about this map, available products associated with this FIRM including historic versions of this FIRM, how to order products or the National Flood Insurance Program in general, please call the FEMA Map Information eXchange at 1-877-FEMA-MAP (1-877-336-2627) or visit the FEMA Map Service Center website at <http://msc.fema.gov>. Available products may include previously issued Letters of Map Change, a Flood Insurance Study Report, and/or digital versions of this map. Many of these products can be ordered or obtained directly from the website. Users may determine the current map date for each FIRM panel by visiting the FEMA Map Service Center website or by calling the FEMA Map Information eXchange.

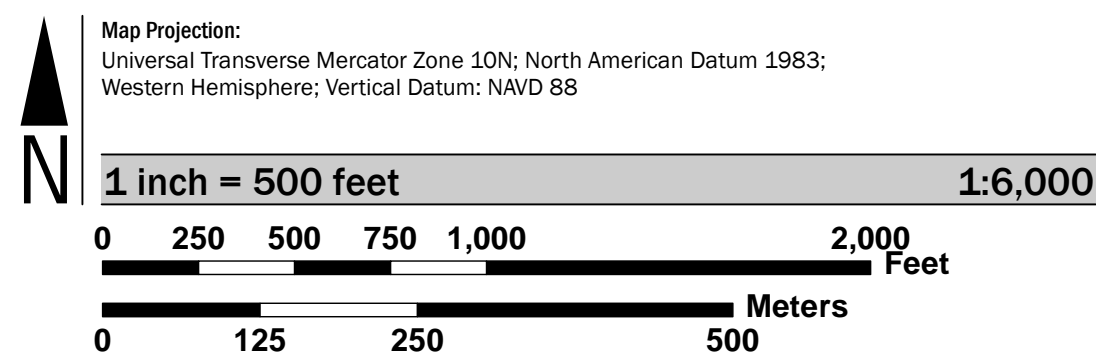
Communities annexing land on adjacent FIRM panels must obtain a current copy of the adjacent panel as well as the current FIRM index. These may be ordered directly from the Map Service Center at the number listed above.

For community and countywide map dates refer to the Flood Insurance Study report for this jurisdiction.

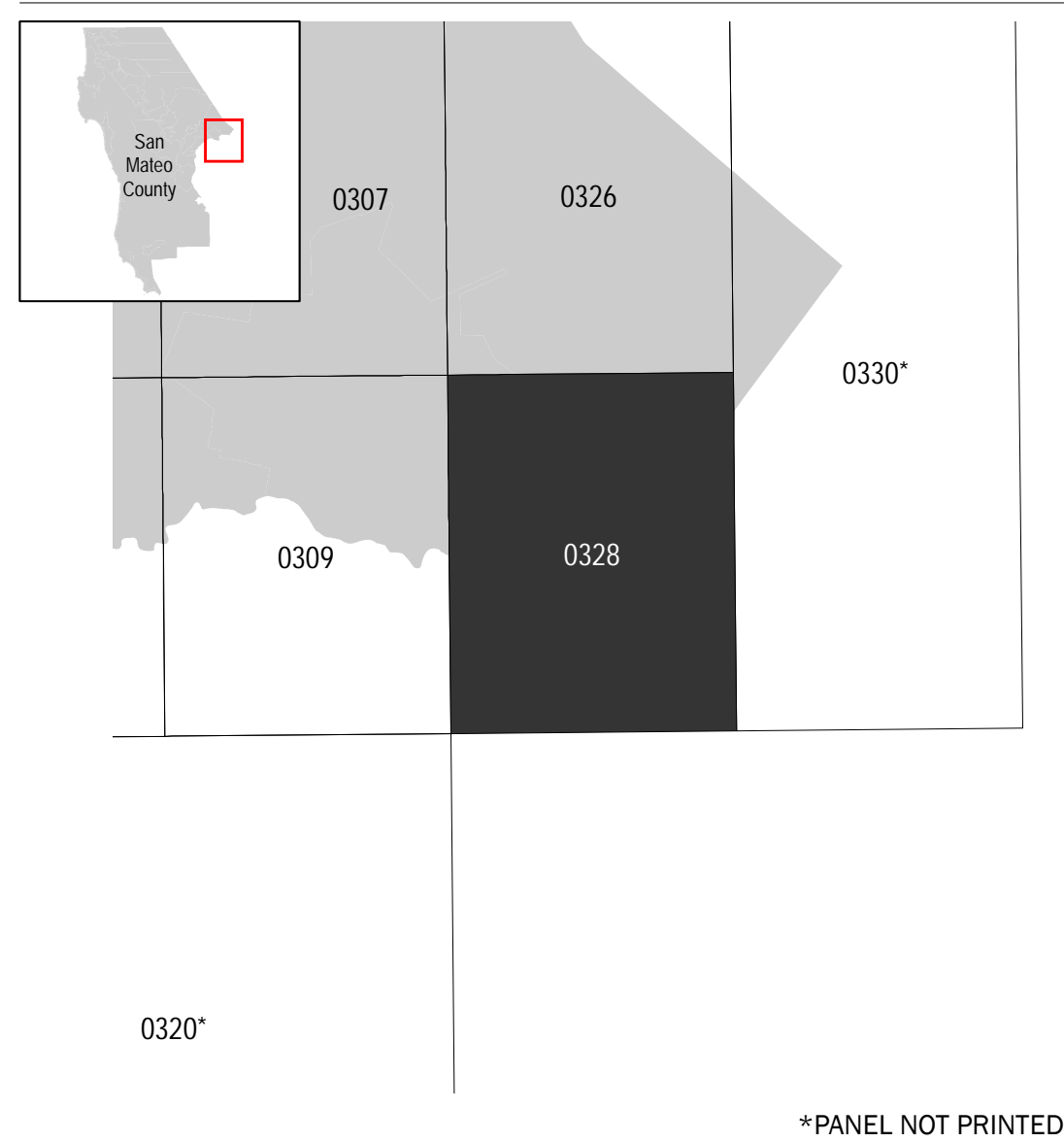
To determine if flood insurance is available in this community, contact your Insurance agent or call the National Flood Insurance Program at 1-800-638-6620.

Base map information shown on this FIRM was derived from USGS LIDAR dated 2010 and Coastal California digital imagery dated 2011. USDA NAIP imagery dated 2012 is used in areas not covered by the Coastal California digital imagery.

SCALE



PANEL LOCATOR



FEMA
 National Flood Insurance Program

NATIONAL FLOOD INSURANCE PROGRAM
 FLOOD INSURANCE RATE MAP

SAN MATEO COUNTY, CALIFORNIA
 and Incorporated Areas

PANEL 328 OF 510

Panel Contains:
 COMMUNITY EAST PALO ALTO, CITY OF 060708
 MENLO PARK, CITY OF 060321

NUMBER	PANEL	SUFFIX
060708	0328	F
060321	0328	F

PRELIMINARY
 8/13/2015

VERSION NUMBER 2.3.2.0
 MAP NUMBER 06081C0328F
 MAP REVISED