

03 NATURE IS NECESSARY

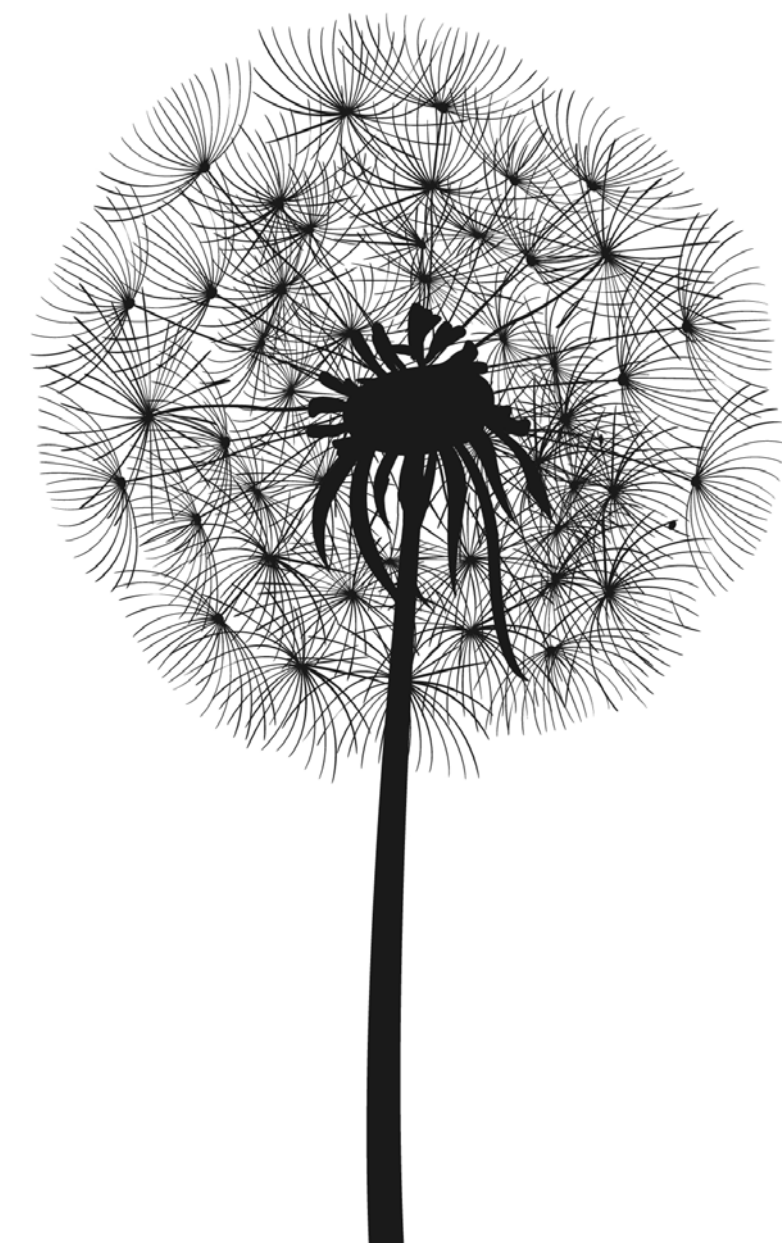
03 NATURE IS NECESSARY

OPEN SPACE CHARACTER



OPEN SPACE CHARACTER

CIVIC “BLOOM” AS THE CENTER-PIECE OF A PARK NETWORK



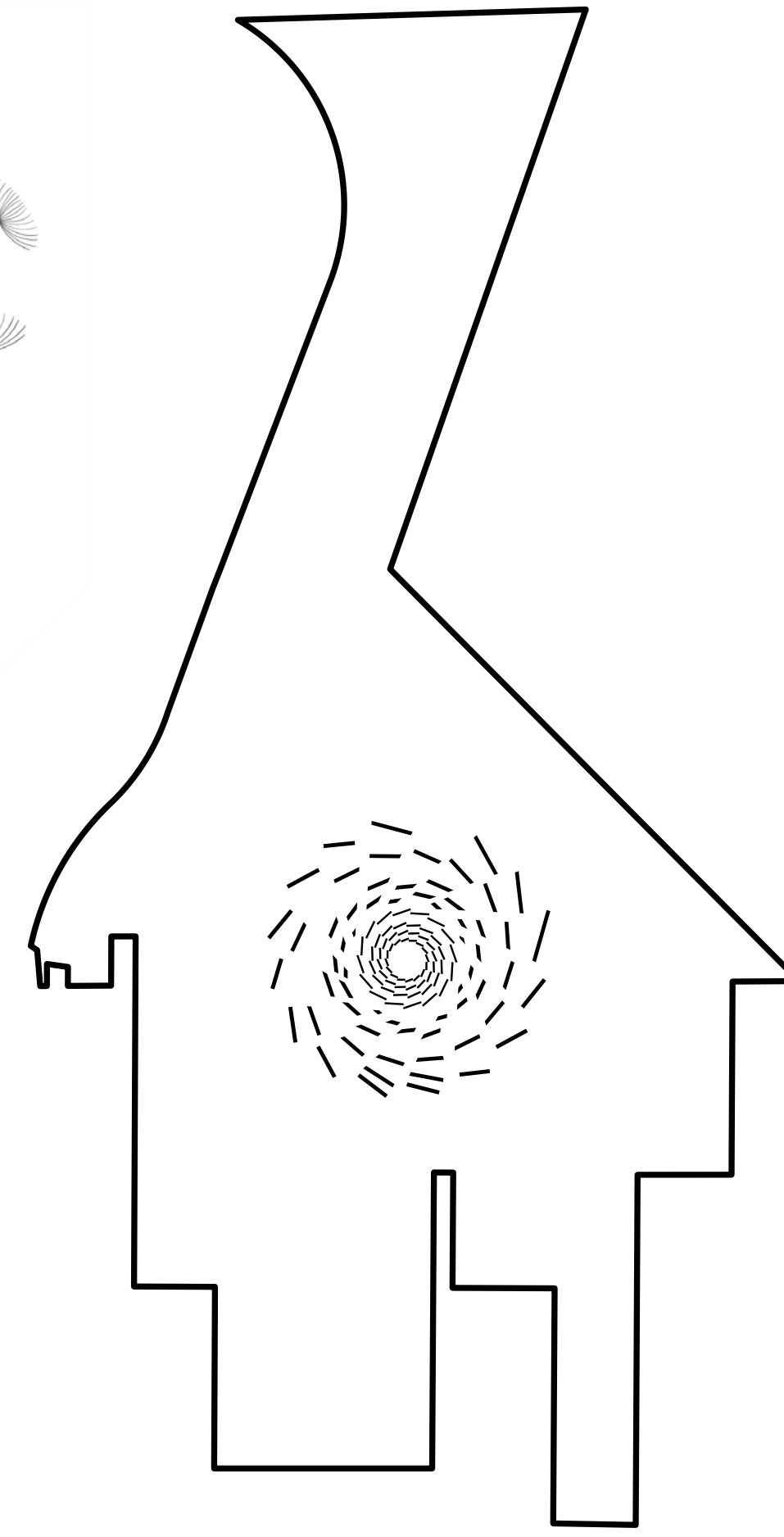
“BLOOM” AS INSPIRATION

The physical and symbolic center, the plaza design is inspired by nature and floral blooms.



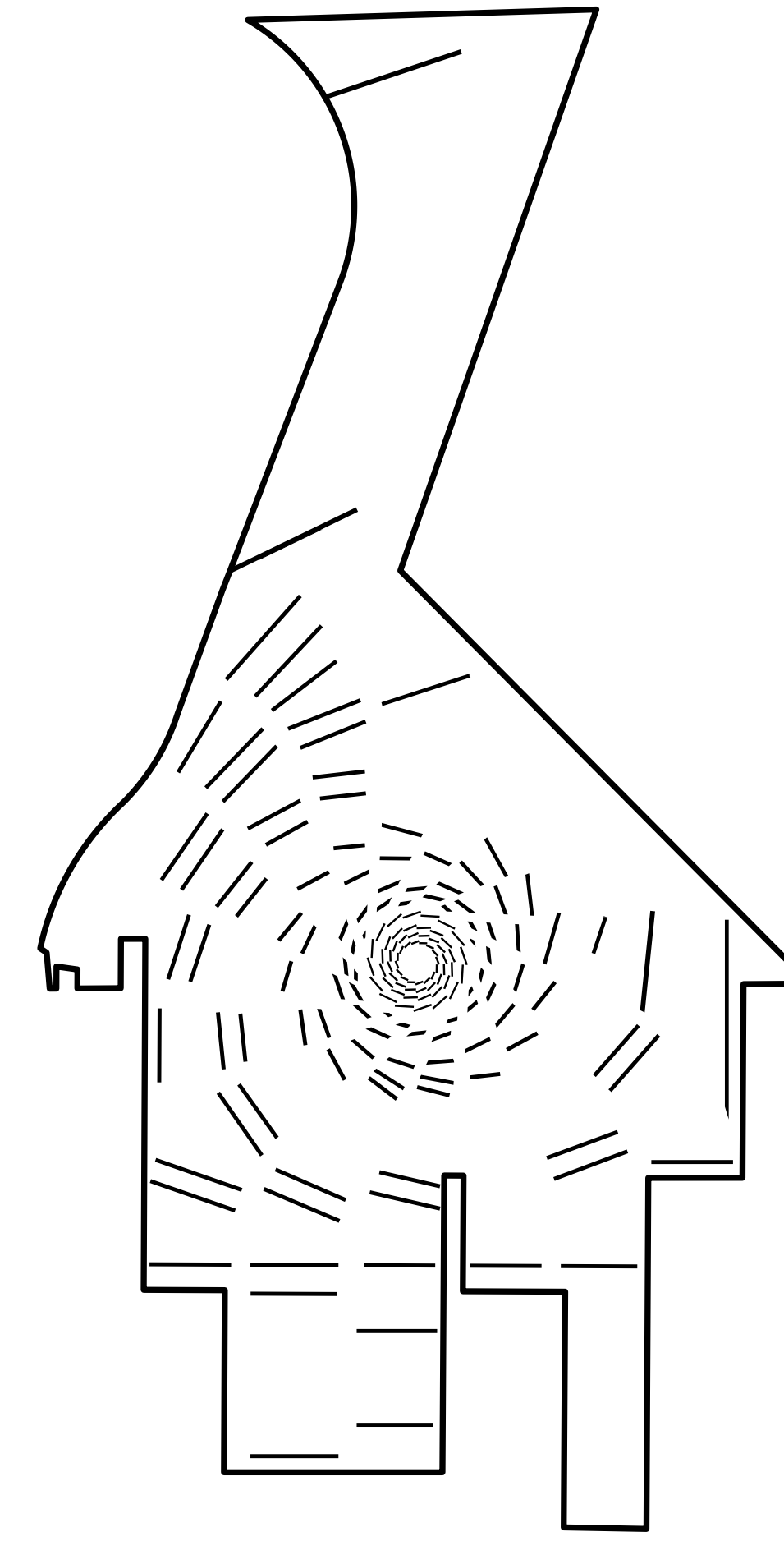
“BLOOM” AS FRAMEWORK

The social and creative energy of the plaza extends outwards to have broader influence on the whole.



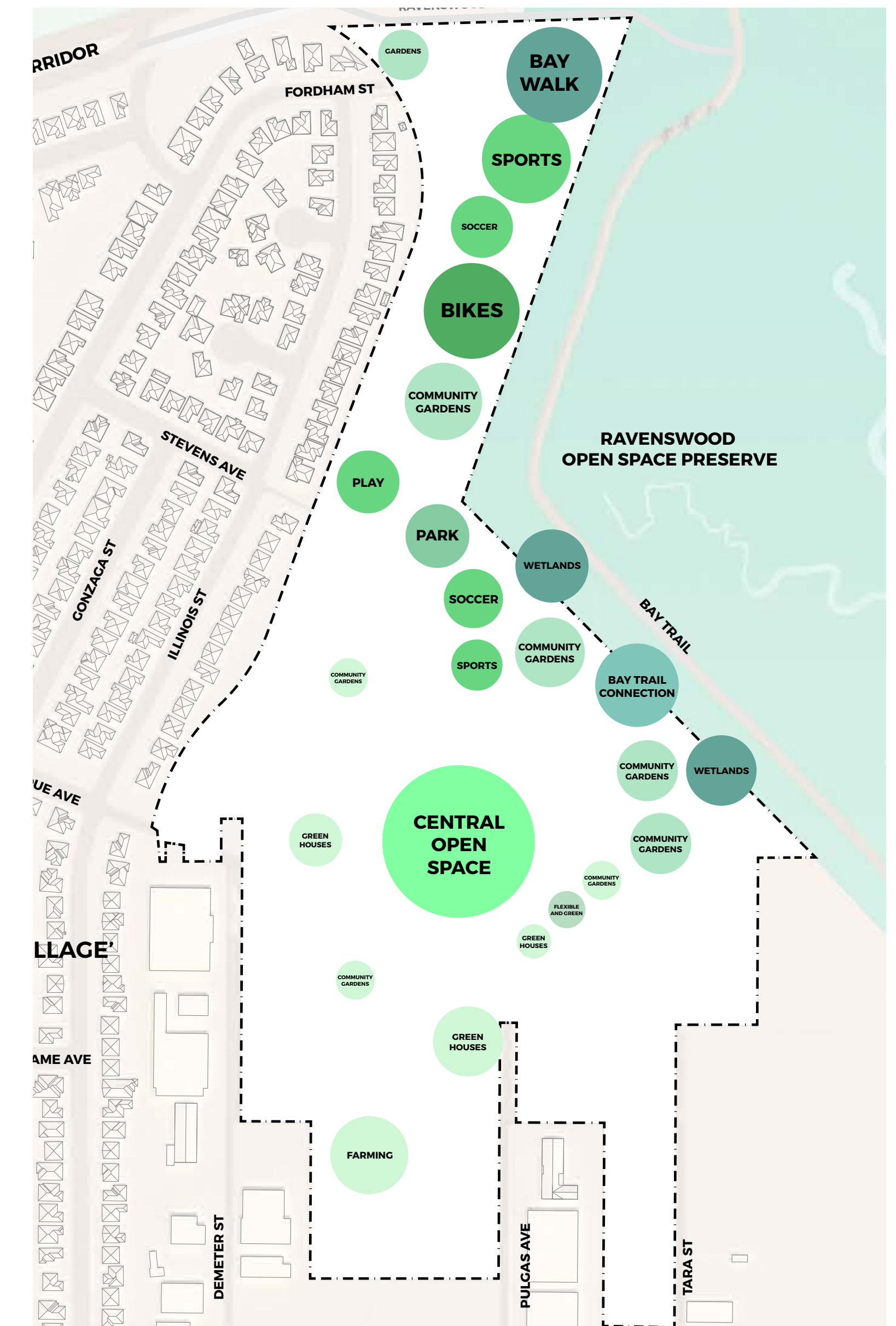
“BLOOM” AS SOCIAL CENTER

The design lends a bold and iconic identity to the new civic core and public commons, while also unifying, clarifying, activating and greening.

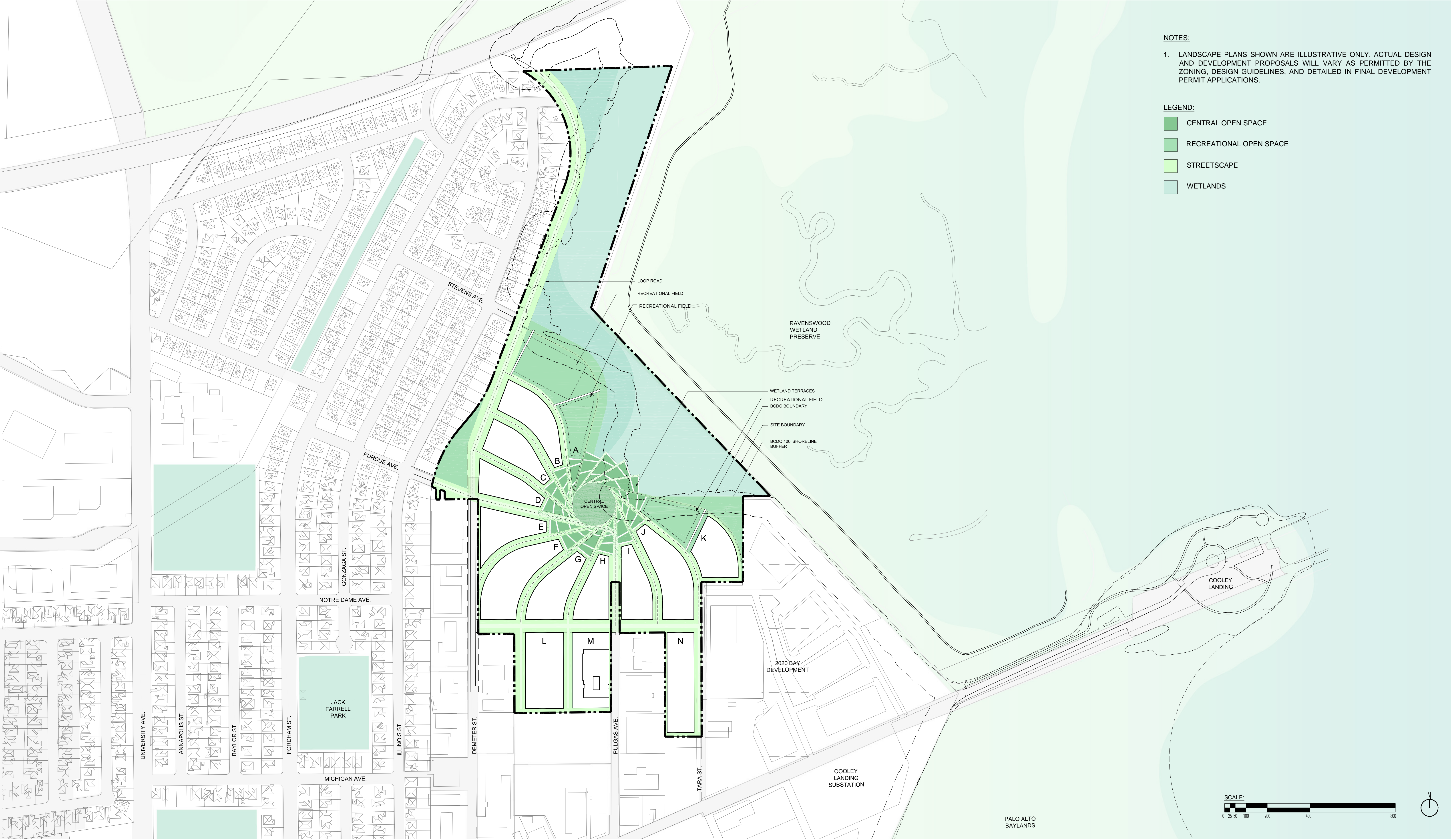


“BLOOM” AS CATALYST

The plaza becomes the signature space and catalyst that spurs vibrant activity across the site.



3.1 PARKS AND OPEN SPACE PLAN



OPEN SPACE CHARACTER

CENTRAL OPEN SPACE

The plaza offers a beautiful setting for recreation, gathering and public programming with the backdrop and draw of the Bay.



GARDEN WEDGES

The spaces surrounding the plaza offer exposure to greenery and nature. By activating the edges, the entire space will feel more social and welcoming, even on unprogrammed days.



WATERFRONT PARK

The waterfront park aims to make the place feel even more natural and bucolic, with trails and carefully sited boardwalks punctuating the horizon and drawing the visitor around the park.



WETLANDS

The waterfront edges and wetlands address sea level rise while re-establishing a relationship with natural systems and improving the surrounding environment and ecology for everyone to enjoy.



*The above reference images are Illustrative Examples.

03 NATURE IS NECESSARY

POTENTIAL PROGRAMMING



FAMILY, GATHERING, COMMUNITY

PLACES FOR FAMILIES



FAMILY SPACES & BARBECUE



OPEN FLEXIBLE PARKLANDS



*The above reference images are Illustrative Examples.

WATERFRONT WITH DIVERSE PROGRAMS

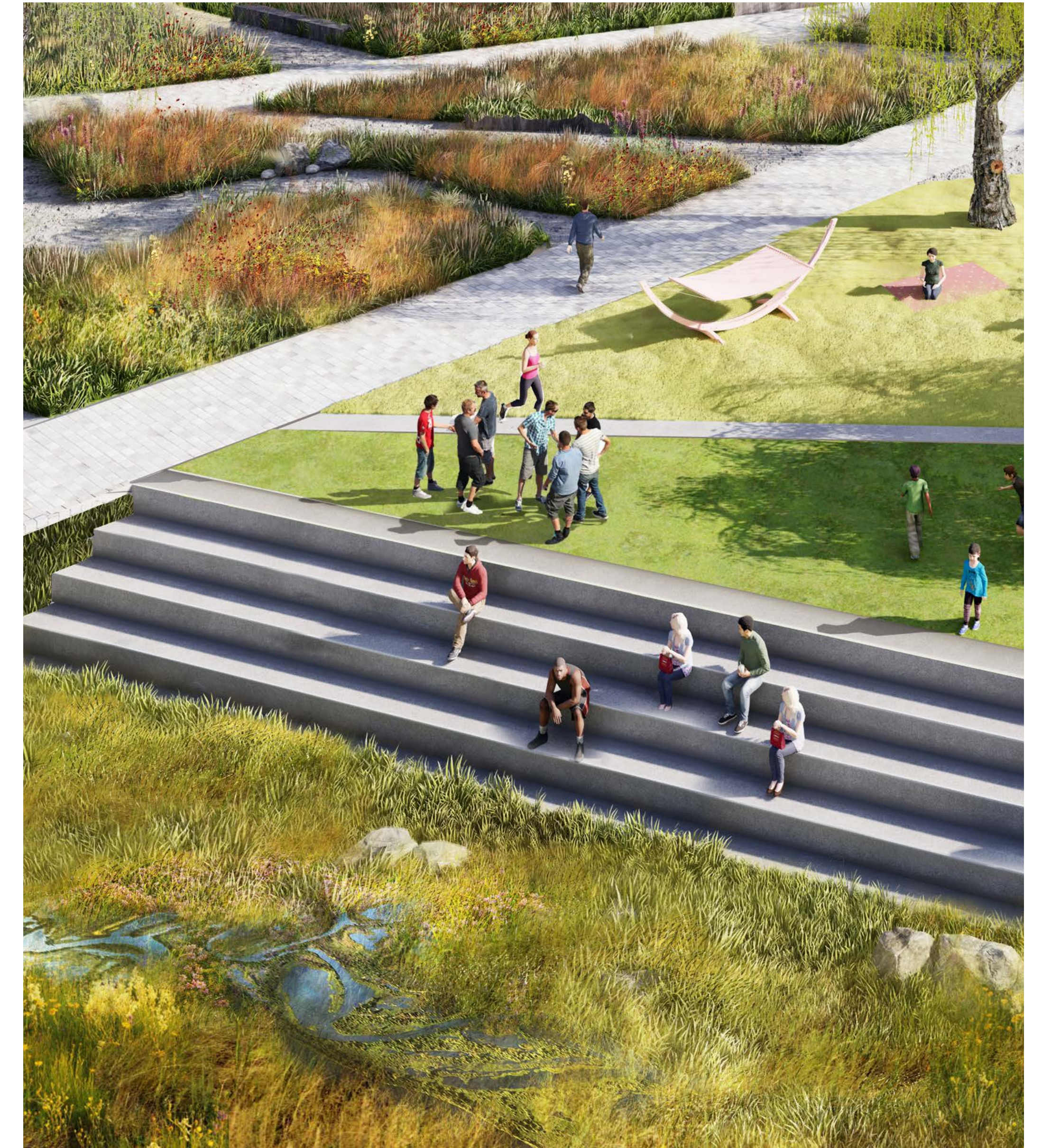
BAY CENTER



PLAY AREA



WETLAND GARDENS



*The above reference images are Illustrative Examples.



OPEN FLEXIBLE PARKS & SPORTS AREAS

Following images are Illustrative Examples:

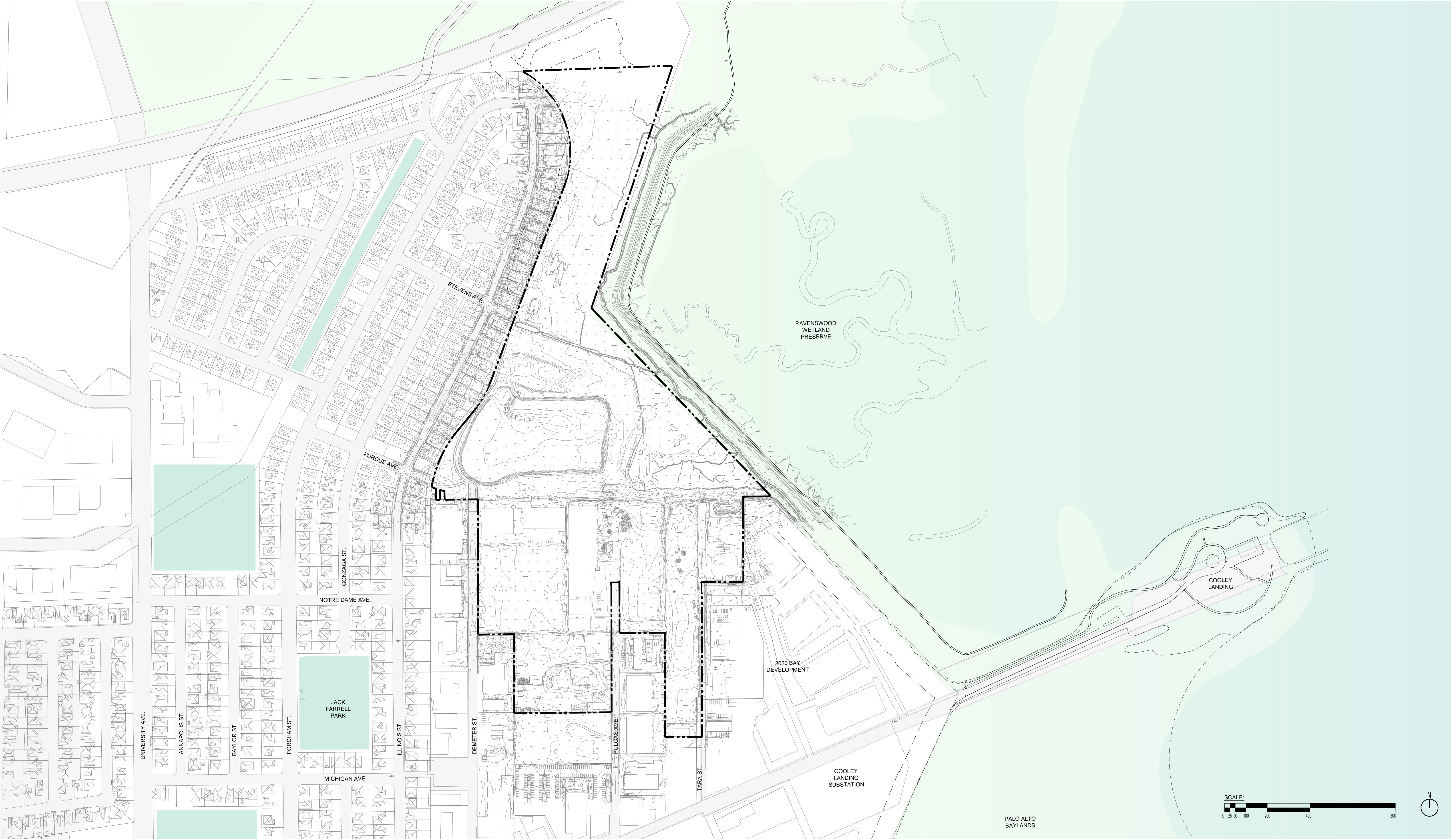


03 NATURE IS NECESSARY

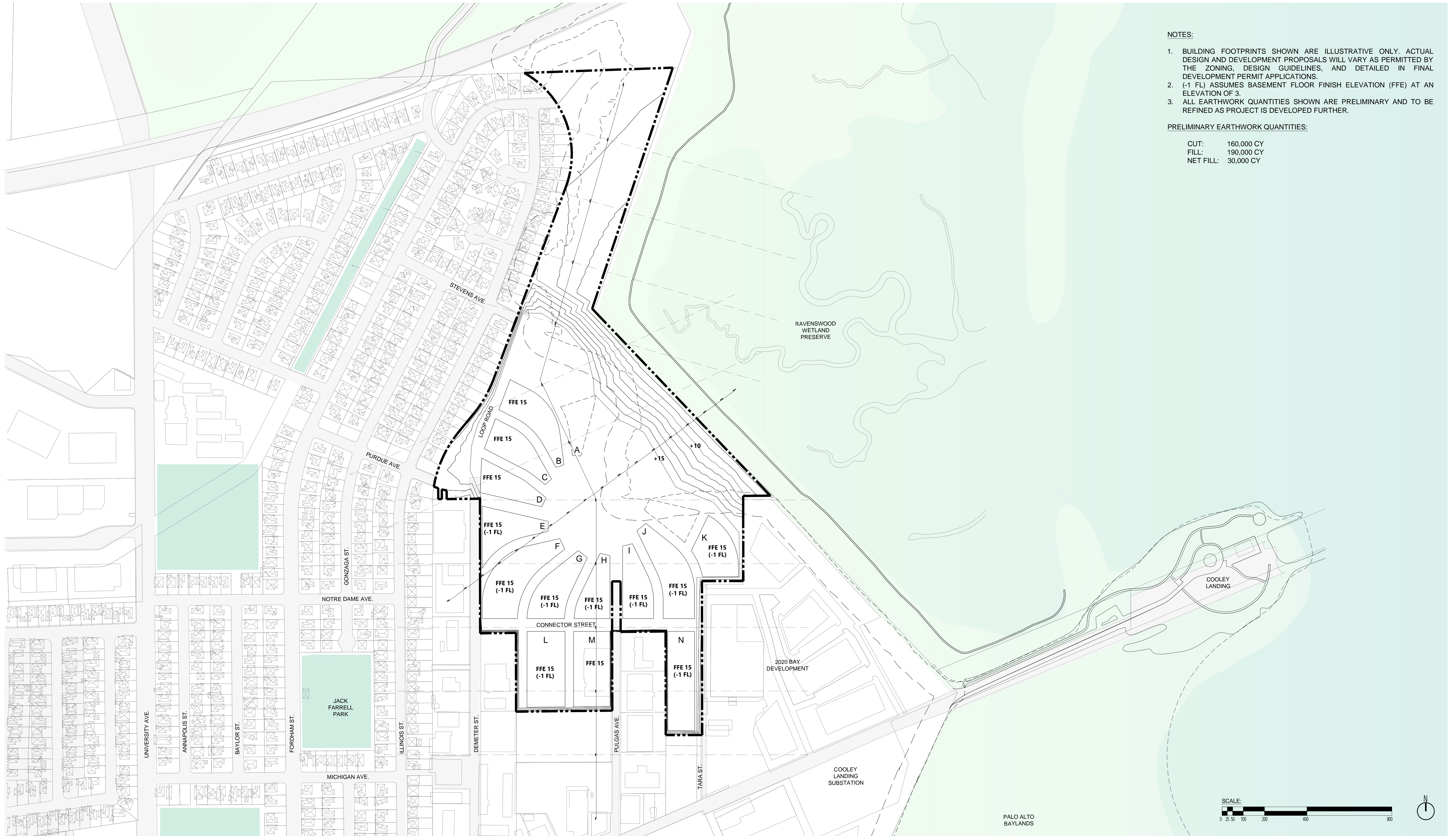
WATERFRONT RESILIENCY



3.2 EXISTING TOPOGRAPHY



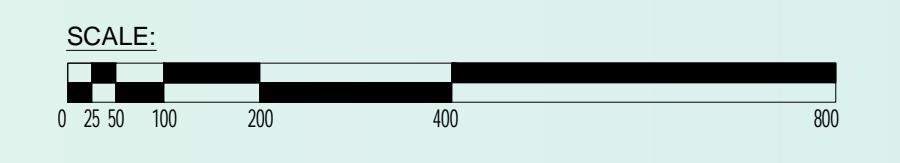
3.3 PRELIMINARY GRADING PLAN



- NOTES:**
1. BUILDING FOOTPRINTS SHOWN ARE ILLUSTRATIVE ONLY. ACTUAL DESIGN AND DEVELOPMENT PROPOSALS WILL VARY AS PERMITTED BY THE ZONING, DESIGN GUIDELINES, AND DETAILED IN FINAL DEVELOPMENT PERMIT APPLICATIONS.
 2. (-1 FL) ASSUMES BASEMENT FLOOR FINISH ELEVATION (FFE) AT AN ELEVATION OF 3.
 3. ALL EARTHWORK QUANTITIES SHOWN ARE PRELIMINARY AND TO BE REFINED AS PROJECT IS DEVELOPED FURTHER.

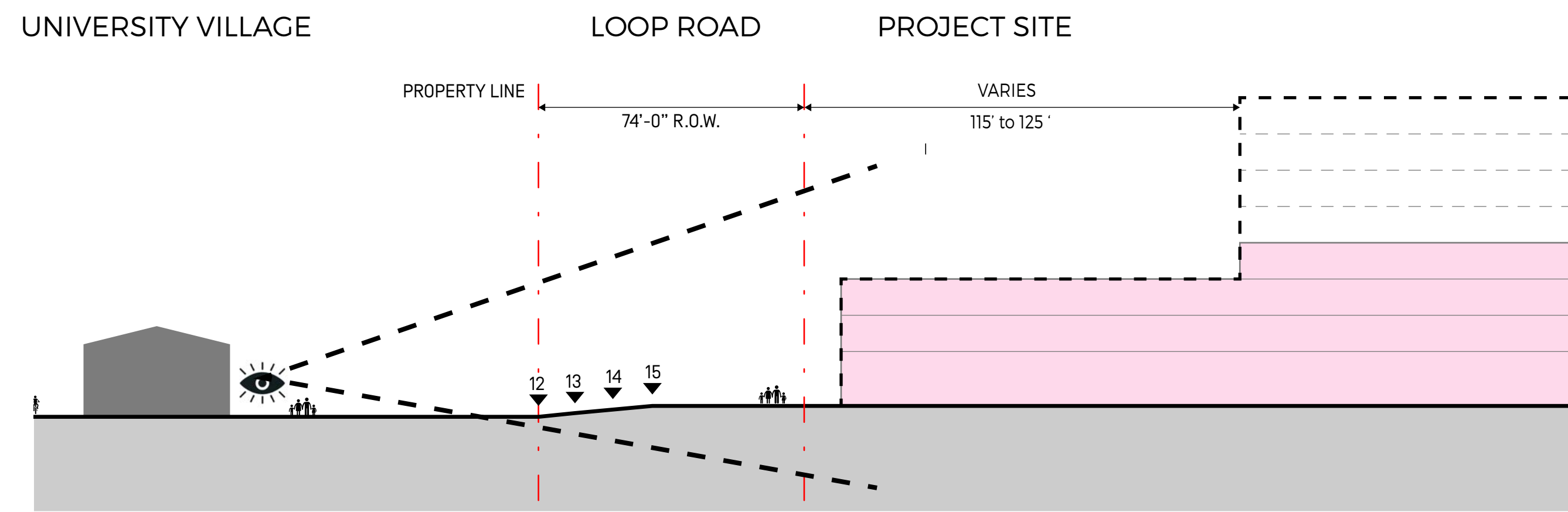
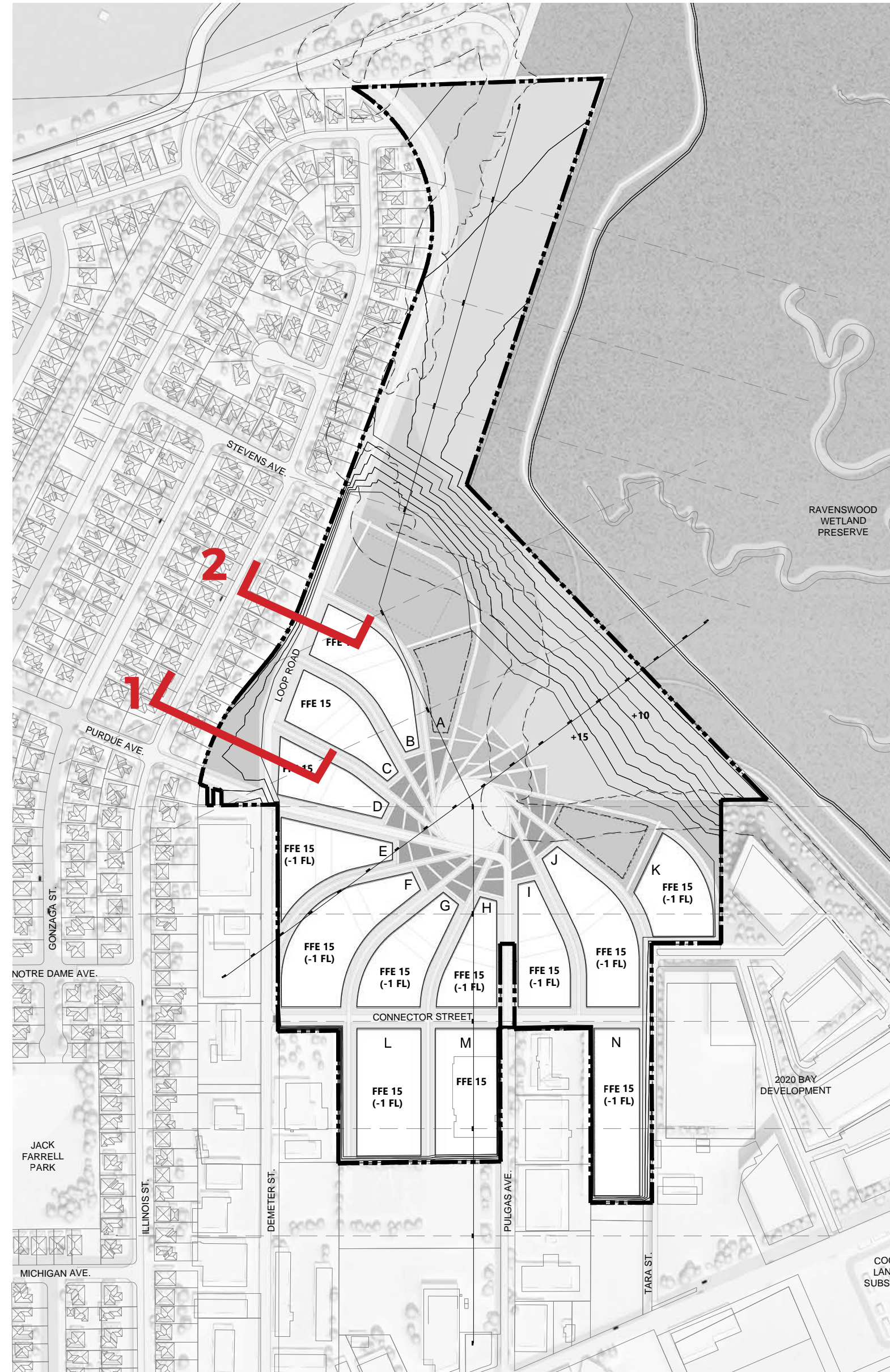
PRELIMINARY EARTHWORK QUANTITIES:

CUT:	160,000 CY
FILL:	190,000 CY
NET FILL:	30,000 CY

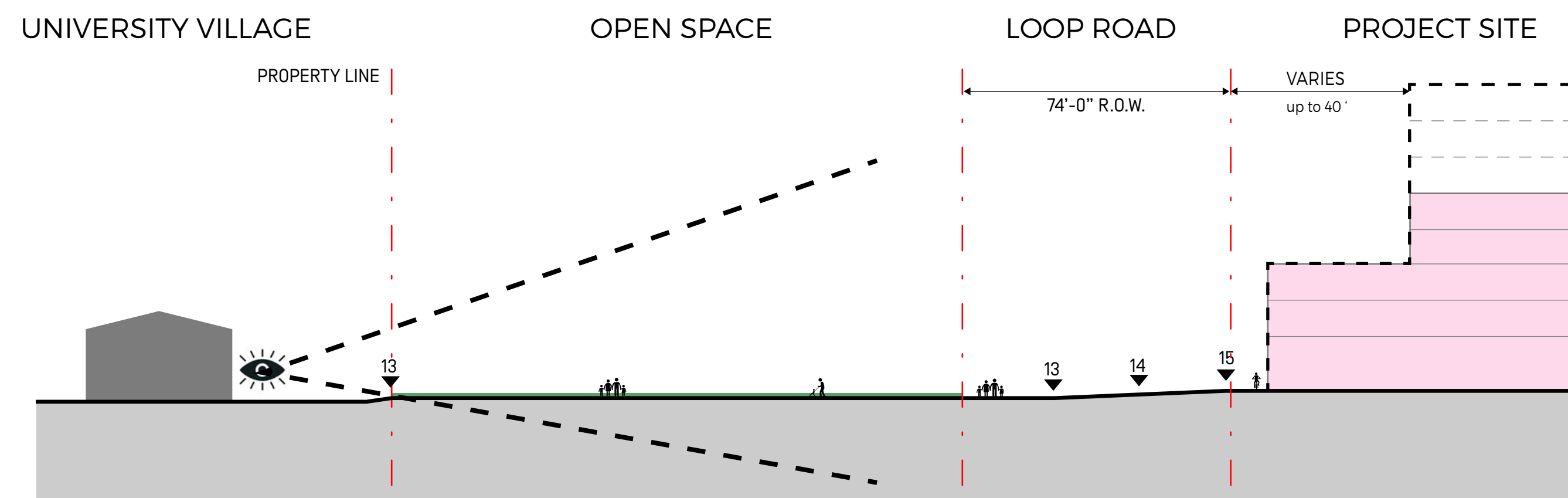


PRELIMINARY SITE SECTION

Preliminary grading elevates the project above the flood plain. To reduce visual impact to residential homes in University Village, the proposed maximum height adjacent to University Village is lower than that of the Specific Plan.



2.



1.

SPECIFIC PLAN ALLOWED HEIGHT
 PROPOSAL HEIGHT



*Above images are for illustrative purposes only



WETLAND ECO-TONE WITH SEA LEVEL RISE

The design of the waterfront edge anticipates sea level rise and incorporates a variety of techniques to protect the site from flooding, some focused on providing access and experience, like terraces and boardwalks, some focused on nature and ecology, like wetland terraces and expanded marshlands.

The landscape of the East Palo Alto waterfront park is designed as a sponge, absorbing storm water in the near-term and rising tides in the future. With its position between the community and water, the waterfront park wetlands become a living laboratory for showcasing bay ecology and sustainable restoration practices, while providing increased connectivity to nature, ecology and recreation for the East Palo Alto community.

The waterfront wetlands, gardens and terraces redefine the city's relationship to the bay, providing a sense of big nature adjacent to the urban context, and supporting healthy lifestyles with spaces for habitat, recreation and community.



PARKS, GARDENS & TRAILS



UPLAND
Coyote Brush
California Sagebrush
Salt Marsh Harvest Mouse
Burrowing Owl



HIGH MARSH
Alkali Bulrush
Black Rail
Salt Marsh Bird's Beak



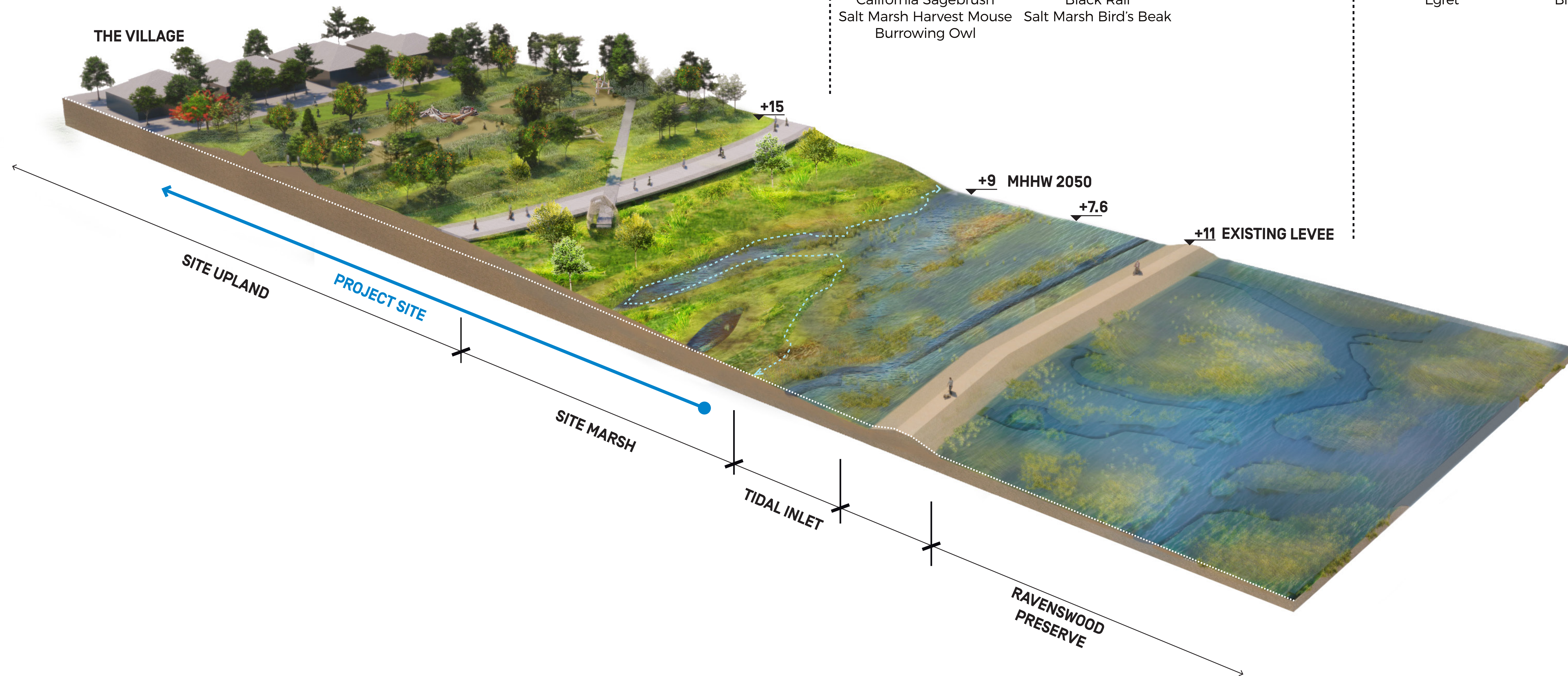
MIDDLE MARSH
Pickleweed



LOW MARSH
Cordgrass
Egret



INTERTIDAL MUDFLAT
Great Blue Heron
Black Necked Stilt



03 NATURE IS NECESSARY

VIEW SHEDS

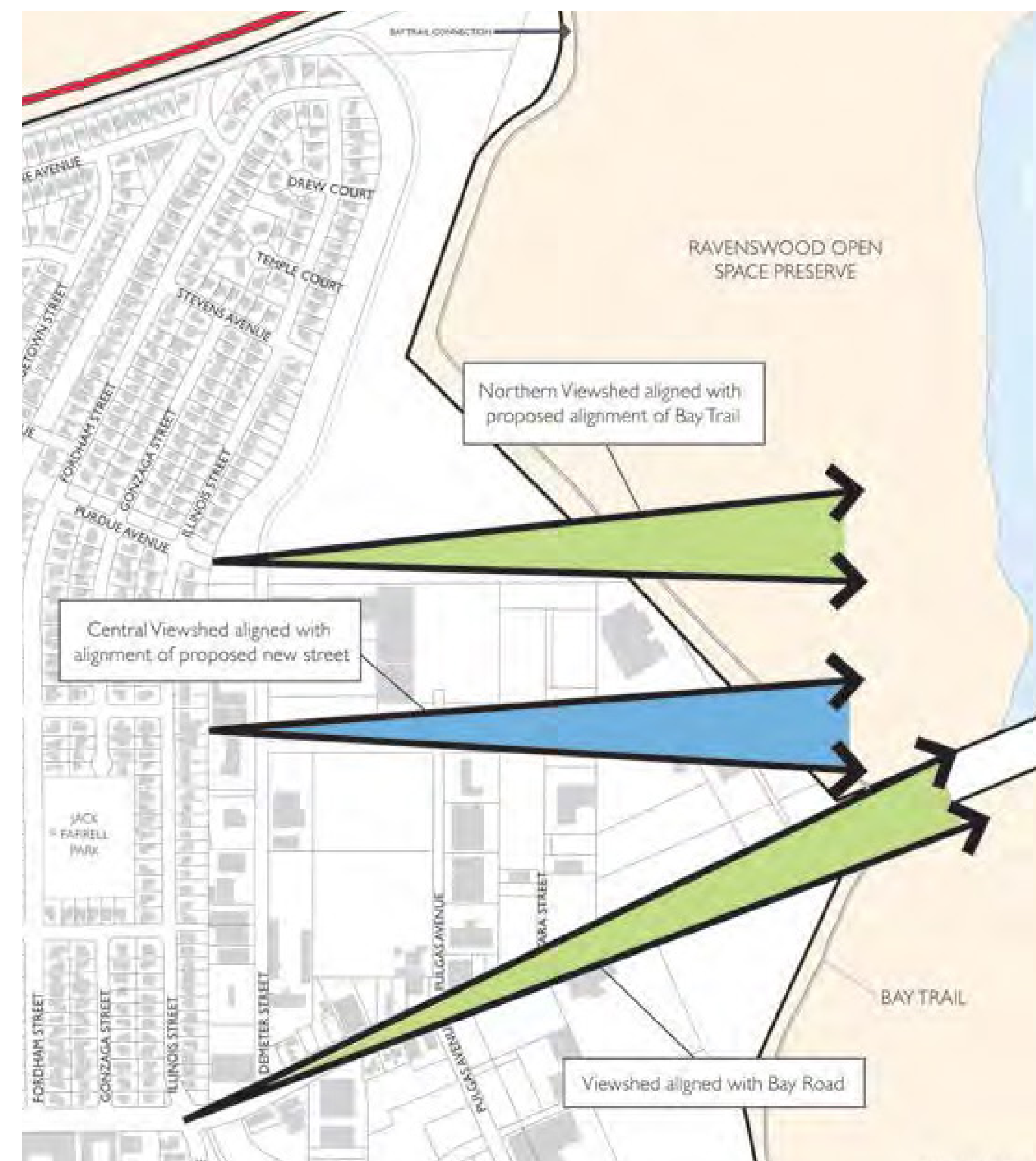
VIEW SHEDS

SPECIFIC PLAN

FIGURE 6-2: KEY VIEWSHEDS

The Specific Plan highlights two existing view sheds at Bay road & Purdue Ave, and one new proposed viewshed looking East at the Connector road

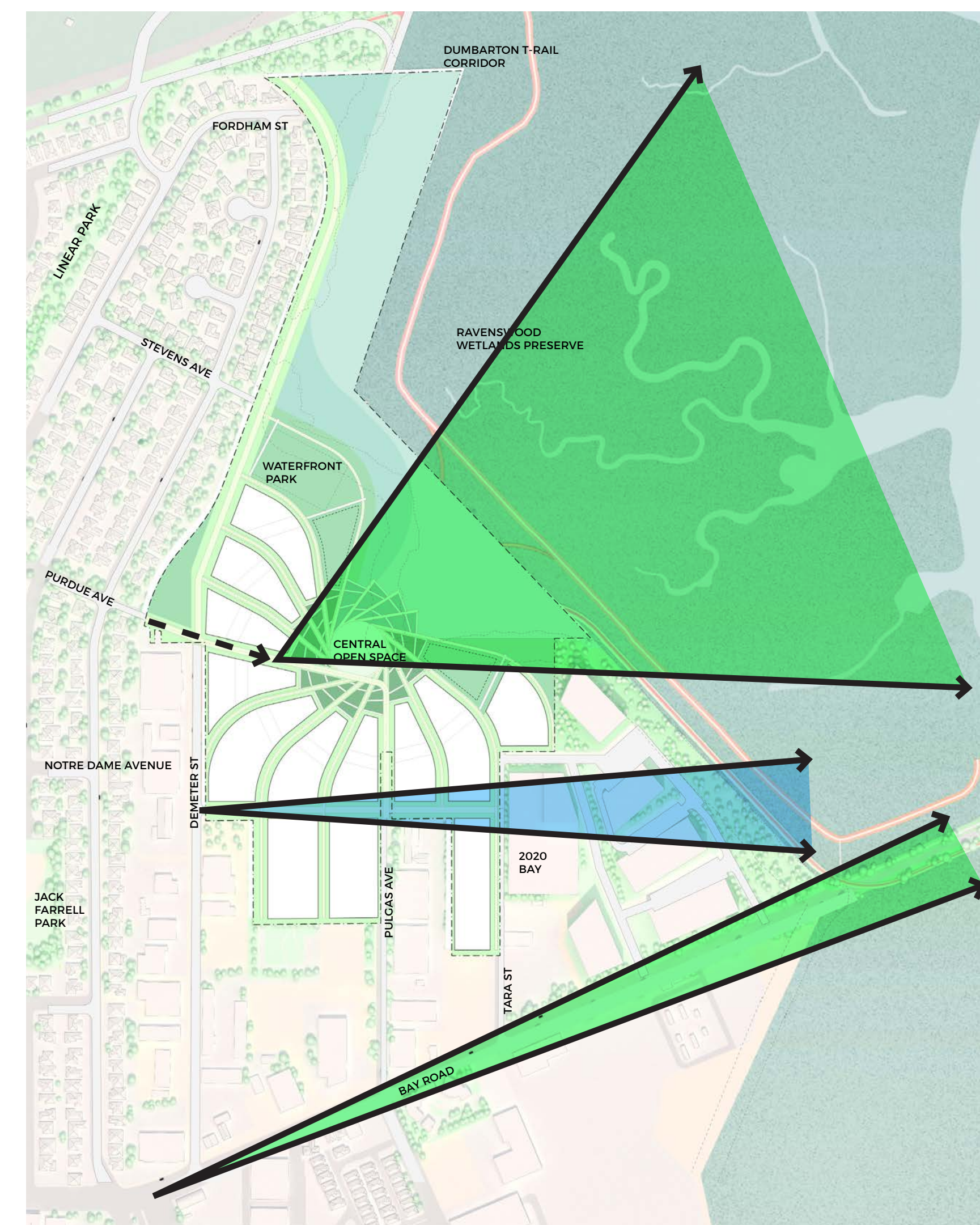
- EXISTING VIEWSHED TO BE PRESERVED
- PROPOSED VIEWSHED



APPLICATION PROPOSED

The Proposed framework does not affect the existing viewshed along Bay Road, provides the new viewshed at the Connector Road (although will potentially be blocked by the neighboring 2020 Bay Development, and expands on the existing viewshed at the end of Purdue Ave. By extending the axis of Purdue Ave into the project it invites the neighborhood to appreciate the expansive view of the Bay from the central public open space.

- EXISTING VIEWSHED TO BE PRESERVED
 - PROPOSED VIEWSHED
- *note: 2020 Bay Development blocks the proposed viewshed



“ALL EYES ON THE PARK”

The project’s curved streets blend the two neighboring frameworks leading to the central park, providing all streets with a preview of the park as you approach the center.

Once arrived to the edge of the park you have:

- an expansive view of the waterfront
- an inviting view across to discover adjacent streets
- an active park that serves as a destination to appreciate the EPA waterfront

