













LEGEND:		
EXISTING	(Symbol Size May Vary)	PROPOSED
---	PROPERTY BOUNDARY	---
---	LOT LINE	---
---	CURB & GUTTER	---
---	STORM DRAIN	---
---	SWALE	---
---	FENCE LINE	---
---	DOMESTIC WATER LINE	---
---	FIRE WATER LINE	---
---	COMMUNICATION LINE	---
---	ELECTRIC LINE	---
---	GAS LINE	---
---	WATER LINE	---
---	JOINT UTILITY LINE	---
---	SANITARY SEWER LINE	---
---	STORM DRAIN LINE	---
---	STREET LIGHT LINE	---
---	CUT / FILL TRANSITION	---
△	CITY STANDARD CURB INLET	△
□	FIELD INLET / FLAT GRATE INLET	□
---	AREA DRAIN	---
○	STORM MANHOLE	○
---	DIRECTION OF SURFACE DRAINAGE	---
---	OVERLAND RELEASE	---
---	CONTOUR	---
---	LIMIT OF GRADING	---
---	RETAINING WALL	---
---	WATER SHUT OFF VALVE	WV

ABBREVIATION:			
BOW	BOTTOM OF WALL	PVC	Poly Vinyl Chloride
BW	BACK OF WALL ELEV.	PUE	Public Utility Elevation
BOP	BOTTOM OF PIPE	PVC	Polyvinyl Chloride
CI	CURB INLET	RCP	Reinforced Concrete Pipe
CL	Center Line	RG	Rough Grade
CS	Concrete Surface	R/W	Right-of-Way
DS	DOWNSPOUT	S	SLOPE
FF	Finished Floor	SD	Storm Drain
FL	Flow Line	SDMH	Storm Drain Manhole
FG	FLOOR GRADE	TC	Treatment Control Measure
GB	Grade Break	TDC	Top of Depressed Curb
GS	Gorge Slab	TVC	Top of Vertical Curb
HM	Hydromodification	TOW	TOP OF WALL
HP	High Point	TFL	FINISH FLOOR LEVEL
LP	Low Point	T.O.S.	TOP OF SIDE WALK
PL	Property Line		

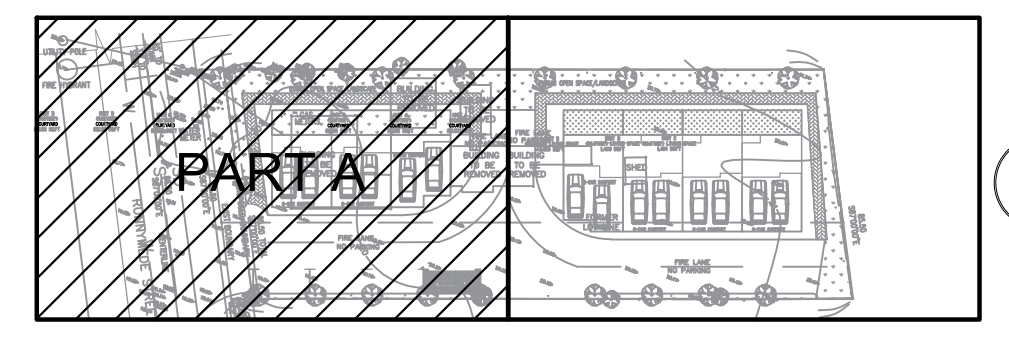
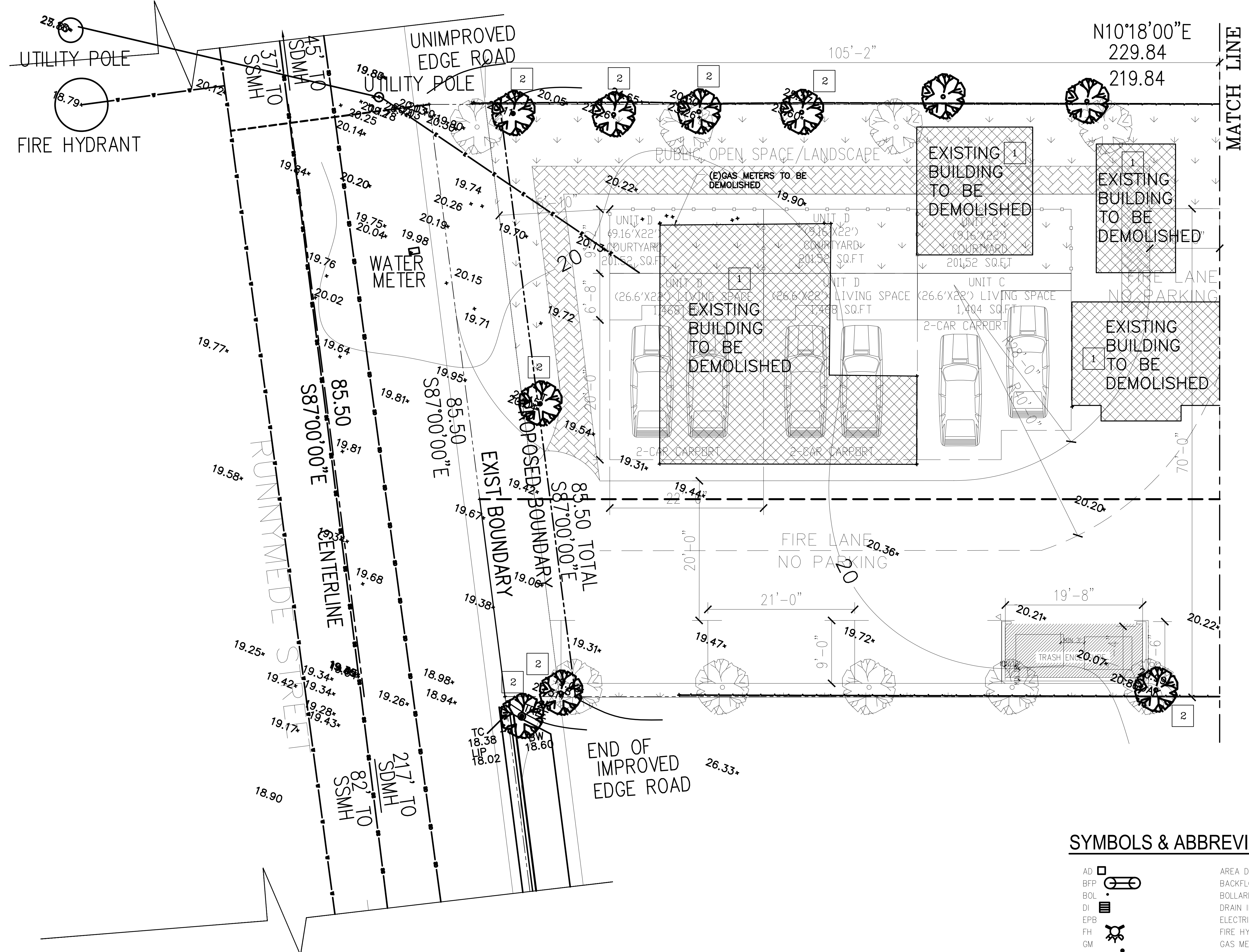
- DEMOLITION KEY NOTE:**
- REMOVE/TRIM THE EXISTING SLAB  
EDGE PREPARATION FOR REPAIR OF THE PAVEMENT
  - PERMIT/INVESTIGATION/COORDINATION FOR  
REMOVAL/REPLACEMENT/TRIMMING OF THE TREE  
FOR THIS CASE IS REQUIRED

DEMOLITION NOTES	
1. CONTRACTOR SHALL COORDINATE WITH PRIME TO DISCONNECT AND REMOVE ELECTRICAL AND GAS SERVICES BEFORE THE START OF DEMOLITION WORK.	8. THE CONTRACTOR SHALL PROTECT EXISTING DRY UTILITY INSTALLATIONS, POLES, TRANSFORMERS, OVERHEAD LINES AND UTILITY VALVES UNTIL THEY ARE REMOVED.
2. CONTRACTOR SHALL COORDINATE THIS SHEET WITH JOINT TRENCH INTENT DRAWINGS AND STREET LIGHTING DRAWINGS BEFORE THE START OF DEMOLITION WORK.	9. CONTRACTOR TO REFER TO EROSION CONTROL PLAN SHEET C-10 FOR EROSION CONTROL, CONSTRUCTION GENERAL PERMIT (CGP) AND STORM WATER POLLUTION PREVENTION PLAN (SWPPP) REQUIREMENTS.
3. CONTRACTOR SHALL COORDINATE WITH AT&T TO DISCONNECT AND REMOVE EXISTING TELECOMMUNICATIONS SERVICE.	10. IF CONTRACTOR ENCOUNTERS UTILITIES OF ANY OTHER ITEMS THAT ARE NOT SHOWN ON THIS PLAN, THEY ARE TO CONTACT THE ARCHITECT/ENGINEER PRIOR TO REMOVING UTILITY.
4. CONTRACTOR SHALL COORDINATE WITH THE CITY TO DISCONNECT AND REMOVE EXISTING WATER SERVICE.	11. ALL DRY UTILITY REMOVAL SHALL BE COORDINATED WITH ELECTRICAL, MECHANICAL, PLUMBING AND JOINT TRENCH PLANS.
5. CONTRACTOR SHALL COORDINATE WITH CONCAST TO DISCONNECT AND REMOVE GAST SERVICE.	12. PLANS OR CAP DEMOLISHED UTILITIES WHERE REQUIRED.
6. CONTRACTOR SHALL REMOVE ALL IRRIGATION LINES AND APPURTENANCES, WHETHER INDICATED ON THIS PLAN OR NOT.	13. ADJUST EXISTING UTILITY VALVES, VALVES, ETC., TO REMAIN TO FUTURE FINISHED GRADE.
7. ITEMS SHOWN TO BE REMOVED OR ABANDONED ARE INDICATED FOR INFORMATION AVAILABLE TO THE ENGINEER. IT IS THE INTENTION OF THESE PLANS TO REMOVE OR ABANDON ALL ON-SITE EXISTING UTILITIES AND IMPROVEMENTS TO ALLOW CONSTRUCTION OF THE PROPOSED IMPROVEMENTS, WHETHER INDICATED ON PLANS OR NOT.	

- NOTES:**
- SURVEYORS CONFIRMATION ON THE GIVEN DATA PRIOR TO CONSTRUCTION IS REQUIRED AND NO EARTHWORK IS ALLOWED PRIOR TO THE SURVEYORS CONFIRMATION.
  - ANY TREE REMOVAL REQUIRES APPLICATION TO PERMIT AND CONTACTING THE CITY ARBORIST. THE SUGGESTED REMOVAL IN THIS DRAWING IS FOR THE GRADING DESIGN AND THE SOUL OF THIS DRAWING DOES NOT BEAR THE PERMISSION FOR ANY TREE REMOVAL.
  - FOR THE REMOVAL OF THE TREES CONTRACTOR SHOULD COORDINATE WITH THE ARCHITECT AND LANDSCAPE DESIGNER OF THE PROJECT.

**BASIS OF BEARING**

FOR THE BEARING PLEASE SEE THE SURVEYING MAP PREPARED BY KENNETH M. ANDERSON AS THE PRELIMINARY DRAWING. SURVEYORS CONFIRMATION ON THE GIVEN DATA PRIOR TO CONSTRUCTION IS REQUIRED AND NO EARTHWORK IS ALLOWED PRIOR TO THE SURVEYORS CONFIRMATION. SEE BENCHMARK NOTE ON THE SURVEYING MAP.



**PADIR**  
CONSULTING ENGINEER

INNOVATIVE  
CIVIL/STRUCTURAL ENG. SERVICES  
CA-LICENSE # C-84986  
415-238-2529  
WWW.PADIR.US

REGISTERED PROFESSIONAL ENGINEER  
DR. AMIN GHAFORPOUR  
C84986  
Exp. 3/31/22  
CIVIL  
STATE OF CALIFORNIA

These drawings and specifications are the proprietary property of PADIR, and shall not be reproduced, copied, or used in any manner without the prior written consent of PADIR.

PROJECT TITLE:  
**COMMON INTEREST  
DEVELOPMENT  
GRADING AND DRAINAGE  
547 Runnymede St, East  
Palo Alto, CA 94303**

REVISION	DESCRIPTION	DATE
00	APPLICATION FOR PERMIT	06/07/2020

DRAWING TITLE:	
DEMOLITION AND TREE LOCATION/ REMOVAL PLAN PART A	
PROJECT NO	684-19108
SUB-PROJ #	1
LEAD ENGINEER	AMIN GHAFORPOUR
DESIGNED BY:	AMIN GHAFORPOUR
DRAWN BY:	HEYDAR ABBASI
CHECKED BY:	AMIN GHAFORPOUR
AUTHORIZED BY:	AMIN GHAFORPOUR
FIELD:	CIVIL
DATE:	06/07/2020
DWG. NO.	684-DR-2-
	CI-3.3

**SYMBOLS & ABBREVIATIONS**

AD	AREA DRAIN
BFP	BACKFLOW PREVENTER
BOL	BOLLARD
DI	DRAIN INLET
EPB	ELECTRIC PULLBOX
FH	FIRE HYDRANT
GM	GAS METER
H-SYM	ACCESSIBLE SYMBOL
SDMH	STORM DRAIN MANHOLE
SIGN	SIGN
SSMH	SANITARY SEWER MANHOLE
STL	LIGHT, STREET LIGHT
TRANS	TRANSFORMER
VLT	VAULT
WPB	WATER PULLBOX
WV	WATERVALVE
MISC-MH	MISCELLANEOUS MANHOLE

**DEMOLITION AND TREE LOCATION/REMOVAL PLAN  
GEOMETRIC DESIGN PART A**

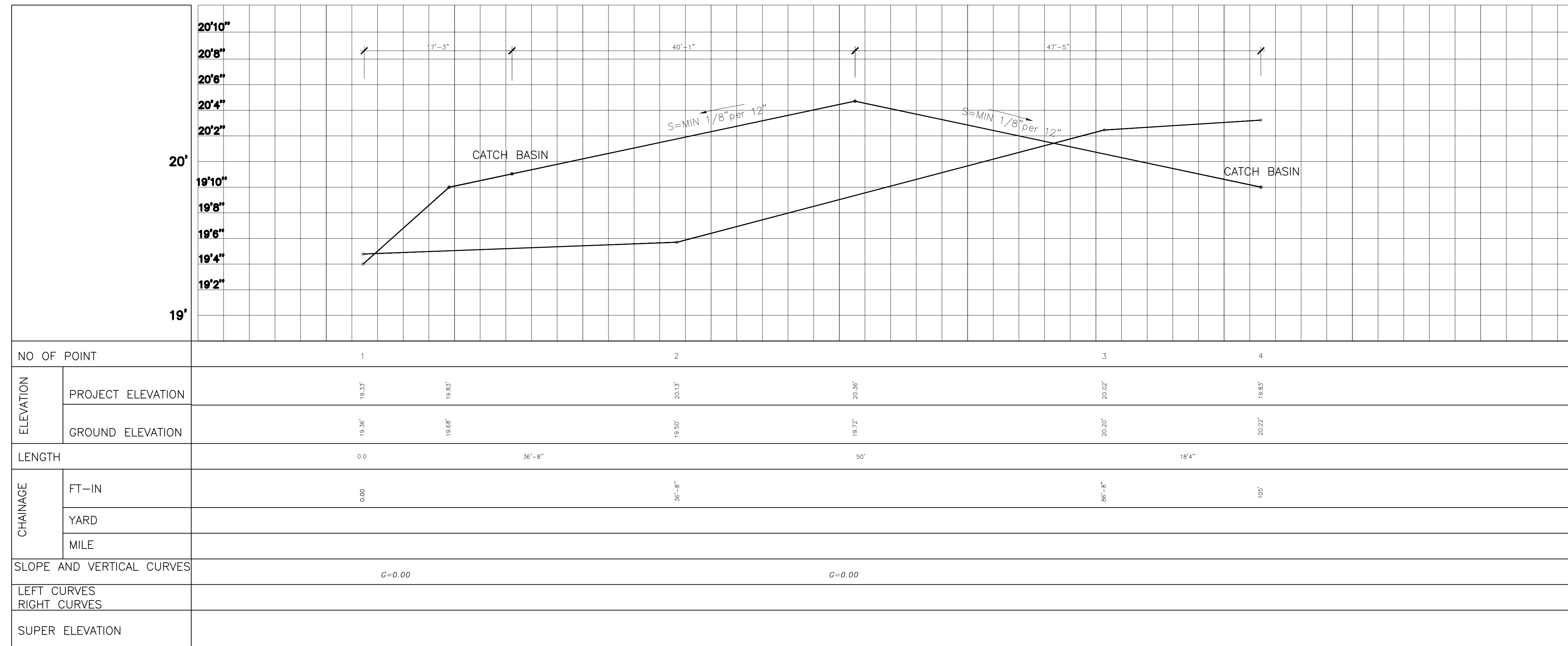
SC. 1/8"=1'







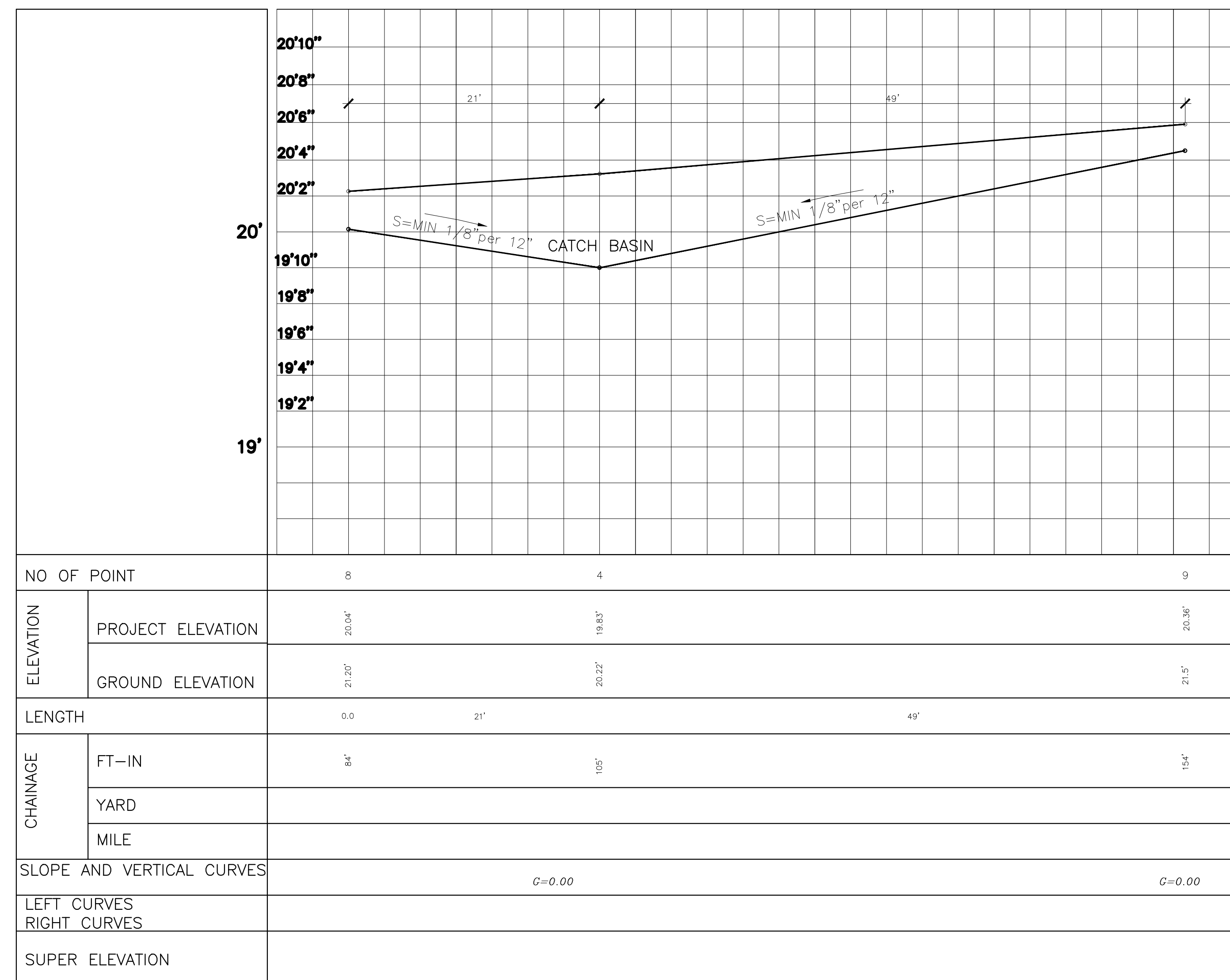




**LONGITUDINAL PROFILE**

SC. PART A (STATION 1 TO 4)

1/8"=1'



**LONGITUDINAL PROFILE**

SC. STATION 8&4&9

1/8"=1'



INNOVATIVE CIVIL/STRUCTURAL ENG. SERVICES  
CA-LICENSE # C-84986  
415-238-5259  
WWW.PADIR.US



These drawings and specifications are the proprietary property of PADIR, and shall not be reproduced, copied, or used in any manner without the prior written consent of PADIR.

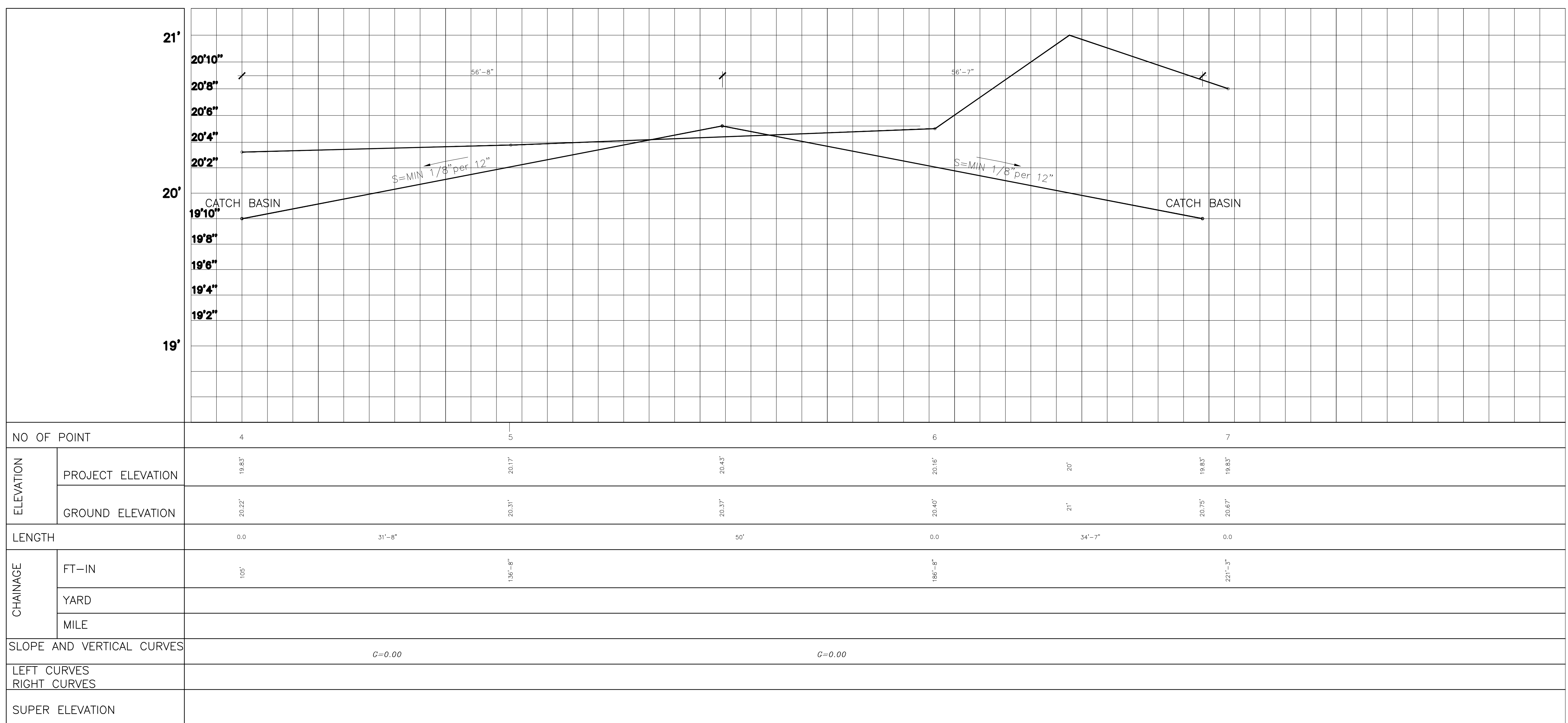
PROJECT TITLE:  
**COMMON INTEREST  
DEVELOPMENT  
GRADING AND DRAINAGE  
547 Runnymede St, East  
Palo Alto, CA 94303**

REVISION	DESCRIPTION	DATE
00	APPLICATION FOR PERMIT	06/07/2020

DRAWING TITLE: <b>LONGITUDINAL PROFILE STATION 1&amp;2&amp;3&amp;4&amp;8&amp;9</b>	
PROJECT NO	684-19108
SUB-PROJ #	1
LEAD ENGINEER	AMIN GHAFORPOUR
DESIGNED BY:	AMIN GHAFORPOUR HEYDAR ABBASI
DRAWN BY:	HEYDAR ABBASI
CHECKED BY:	AMIN GHAFORPOUR
AUTHORIZED BY:	AMIN GHAFORPOUR
FIELD:	CIVIL
DATE:	06/07/2020
DWG. NO.	684-DR-2- <b>CI-4.3</b>



These drawings and specifications are the proprietary property of PADIR, and shall not be reproduced, copied, or used in any manner without the prior written consent of PADIR.



**LONGITUDINAL PROFILE**  
SC. PART B (STATION 4 TO 7) 1/8"=1'

PROJECT TITLE:  
**COMMON INTEREST  
DEVELOPMENT  
GRADING AND DRAINAGE  
547 Runnymede St, East  
Palo Alto, CA 94303**

REVISION	DESCRIPTION	DATE
00	APPLICATION FOR PERMIT	06/07/2020

DRAWING TITLE:  
**LONGITUDINAL PROFILE  
STATION 4&5&6&7**

PROJECT NO	684-19108
SUB-PROJ #	1
LEAD ENGINEER	AMIN GHAFOORIPOUR
DESIGNED BY:	AMIN GHAFOORIPOUR HEYDAR ABBASI
DRAWN BY:	HEYDAR ABBASI
CHECKED BY:	AMIN GHAFOORIPOUR
AUTHORIZED BY:	AMIN GHAFOORIPOUR
FIELD:	CIVIL
DATE:	06/07/2020
DWG. NO.	684-DR-2- <b>CI-4.4</b>





**LEGEND:**  
**EXISTING** (Symbol Size May Vary) **PROPOSED**

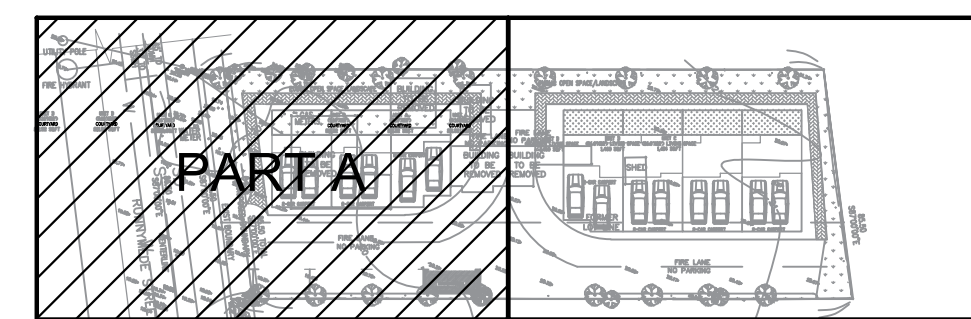
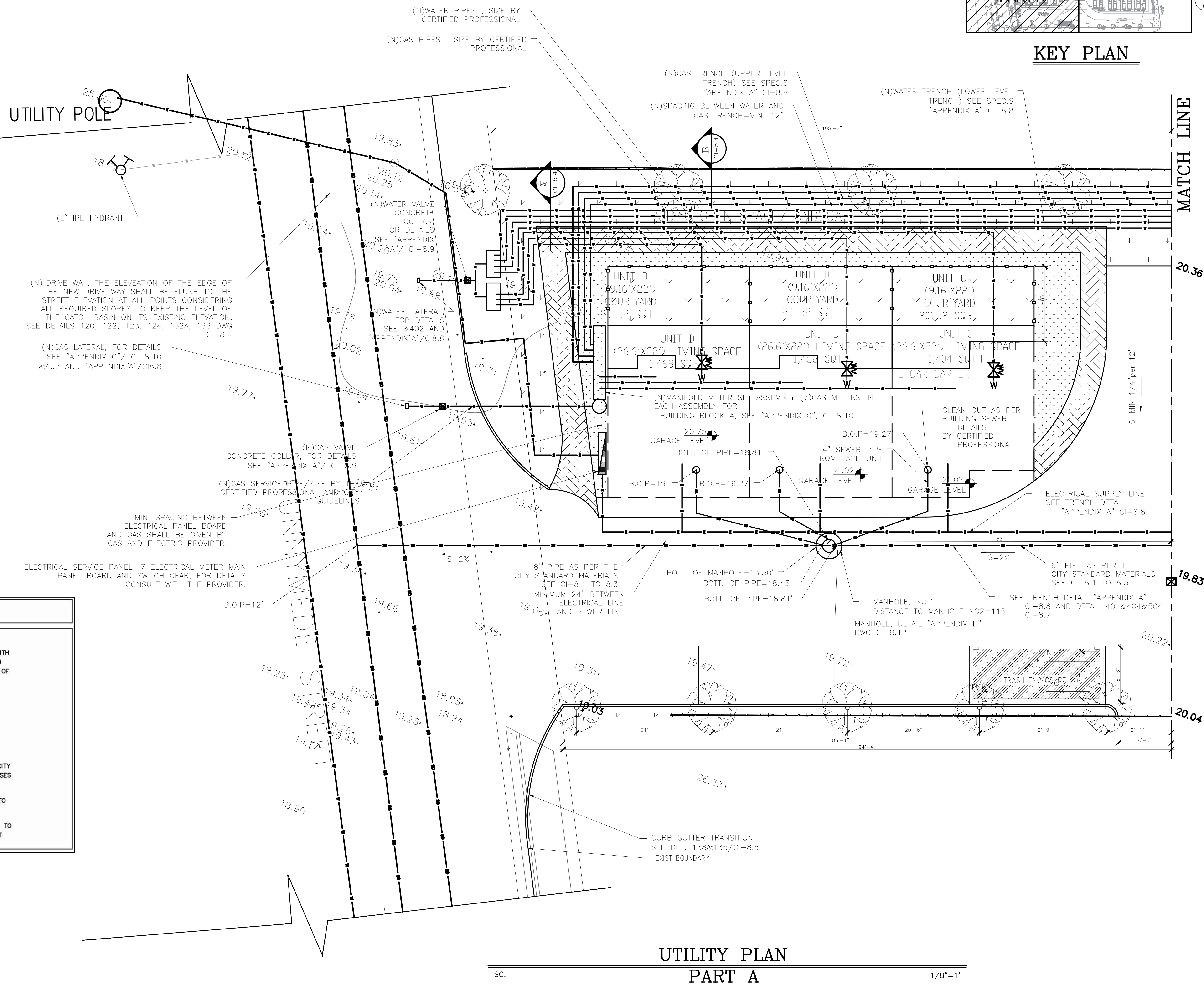
	PROPERTY BOUNDARY		LOT LINE
	CURB & GUTTER		STORM DRAIN
	SWALE		FENCE LINE
	DOMESTIC WATER LINE		FIRE WATER LINE
	ELECTRIC LINE		GAS LINE
	WATER LINE		JOINT UTILITY LINE
	SANITARY SEWER LINE		STORM DRAIN LINE
	STREET LIGHT LINE		CUT / FILL TRANSITION
	CITY STANDARD CURB INLET		FIELD INLET / FLAT GRATE INLET
	AREA DRAIN		STORM MANHOLE
	DIRECTION OF SURFACE DRAINAGE		OVERLAND RELEASE CONTOUR
	LIMIT OF GRADING		RETAINING WALL
	WATER SHUT OFF VALVE		WV

**ABBREVIATION:**

BOW	BOTTOM OF WALL	PVC	Poly Vinyl Chloride
BW	BACK OF WALL ELEV.	PUE	Public Utility Easement
BOP	BOTTOM OF PIPE	PVC	Polyvinyl Chloride
CI	CURB INLET	RCP	Reinforced Concrete Pipe
CL	Center Line	RG	Rough Grade
CS	Concrete Surface	R/W	Right-of-Way
DS	DOWNSPOUT	S	SLOPE
FF	Finished Floor	SD	Storm Drain
FL	Flow Line	SDMH	Storm Drain Manhole
FG	FLOOR GRADE	TC	Top of Curb
GB	Grade Break	TCM	Treatment Control Measure
GS	Garage Slab	TDC	Top of Depressed Curb
HM	Hydromodification	TVC	Top of Vertical Curb
HP	High Point	TOW	TOP OF WALL
LP	Low Point	TFL	FINISH FLOOR LEVEL
PL	Property Line	T.O.S.	TOP OF SIDE WALK

**UTILITY NOTES**

- CONTRACTOR SHALL BE RESPONSIBLE FOR COORDINATING AND SCHEDULING ALL WORK WITH UTILITY COMPANIES INCLUDING INSPECTIONS, DISCONNECTIONS, INFRASTRUCTURE INSTALLATION AND FINAL SERVICE CONNECTIONS. THE CONTRACTOR IS RESPONSIBLE, WITH PG&E, FOR ALL ASPECTS OF THIS PROJECT INCLUDING ARRANGING FOR DISCONNECTION OF SERVICES, FOR SCHEDULING INSPECTIONS, OBTAINING SIGN-OFFS, AND RELOCATION OF SERVICES. CONTRACTOR SHALL BE AWARE THAT PG&E REQUIRES EXTENSIVE ADVANCE NOTIFICATION AND SHOULD SCHEDULE THEIR WORK ACCORDINGLY. CONTRACTOR SHALL NOT MAKE ANY CLAIMS FOR TIME DELAY DUE TO ANY PG&E WORK ASSOCIATED WITH THIS PROJECT.
- PG&E LINES SHALL NOT BE INSTALLED IN THE SAME TRENCH AS ANY MET UTILITIES.
- ELECTRICAL SHOWN FOR INFORMATION ONLY. REFER TO ELECTRICAL PLANS FOR CONSTRUCTION DETAILS.
- SOIL IS EXTREMELY CORROSIVE AND CATHODIC PROTECTION SHALL BE PROVIDED PER CITY STANDARDS. ANODE TEST STATIONS SHALL BE PROVIDED AT ALL VALVES, TEE'S, CROSSES AND HYDRANTS.
- ALL CATCH BASINS SHALL BE STAMPED WITH CITY STANDARDS "NO DUMPING! FLOWS TO BAY" PLAQUES.
- CONTRACTOR TO CUT ENTIRE TRENCH PRIOR TO THE CONSTRUCTION OF GRAVITY LINES TO ENSURE ADEQUATE CLEARANCES WITH EXISTING UTILITIES. IF CONFLICTS EXIST CONTACT ENGINEER FOR REMEDY. (COVER OPEN TRENCH WITH STEEL PLATE AS NECESSARY)



**KEY PLAN**

**PADIR**  
 CONSULTING ENGINEER  
 INNOVATIVE CIVIL/STRUCTURAL ENG. SERVICES  
 CA-LICENSE # C-84986  
 415-228-3229  
 WWW.PADIR.US

REGISTERED PROFESSIONAL ENGINEER  
 DR. AMIN GHAFORPOUR  
 C84986  
 Exp. 3/31/22  
 CIVIL  
 STATE OF CALIFORNIA

These drawings and specifications are the proprietary property of PADIR, and shall not be reproduced, copied, or used in any manner without the prior written consent of PADIR.

PROJECT TITLE:  
**COMMON INTEREST DEVELOPMENT GRADING AND DRAINAGE**  
 547 Runnymede St, East  
 Palo Alto, CA 94303

REVISION	DESCRIPTION	DATE
00	APPLICATION FOR PERMIT	06/07/2020

DRAWING TITLE:  
**UTILITY PLAN PART A**

PROJECT NO	684-19108
SUB-PROJ #	1
LEAD ENGINEER	AMIN GHAFORPOUR
DESIGNED BY:	AMIN GHAFORPOUR HEYDAR ABBASI
DRAWN BY:	HEYDAR ABBASI
CHECKED BY:	AMIN GHAFORPOUR
AUTHORIZED BY:	AMIN GHAFORPOUR
FIELD:	CIVIL
DATE:	06/07/2020
DWG. NO.	684-DR-2- <b>CI-5.3</b>

**UTILITY PLAN PART A**

SC. 1/8"=1'

