

Universal Planning Application

Boom Pop Park - Corner of Donohoe St. & W. Bayshore Rd.

Operational Letter

Project Description:

A temporary, pop-up recreation and fitness area for Woodland Park. Activities to include a fitness/wellness area for exercise classes provided by the East Palo Alto YMCA and stationary fitness equipment; children play areas; and family picnic and relaxing areas. This temporary public open space may also be used for periodic Woodland Park resident events.

Hours of Operations:

The hours of operations will be sunrise to sunset, seven days a week. Operational date: August 30, 2022.

Site Security:

The temporary open space will be opened and closed each day by Genesis Security, the Woodland Park security service. The park will part of Genesis's regular patrol route through the neighborhood. Any criminal activity will be referred to the EPA Police Department. The park will have signage with the telephone numbers of both Genesis and the Police Department. We can also provide this contact information to our neighbors.

Site Lighting:

The temporary open space will be lit from sundown to sunrise by two light poles strategically placed around the area. These light fixtures will be governed by automatic switches triggered by photo cells. Lighting will be adjusted to reduce any bleed onto adjacent parcels. This lighting system has been in use at this temporary pop-up open space.

Clean-up:

The temporary park will be cleaned each day by Woodland Park day Porters. Trash and Re-cycle cans will be provided throughout the site and will be emptied each day. Pet Poop Station with bags will be placed on the perimeters with signage reminding pet owners to clean-up after their pets. All graffiti will be removed within 72 hours of discovery in a manner which retains the existing color and texture of the wall surface as most practically feasible.

Parking:

Adjacent parking spaces are contained in the public right-of-way, and parking enforcement will be provided by the EPA Police Department. This space results in no loss of parking.

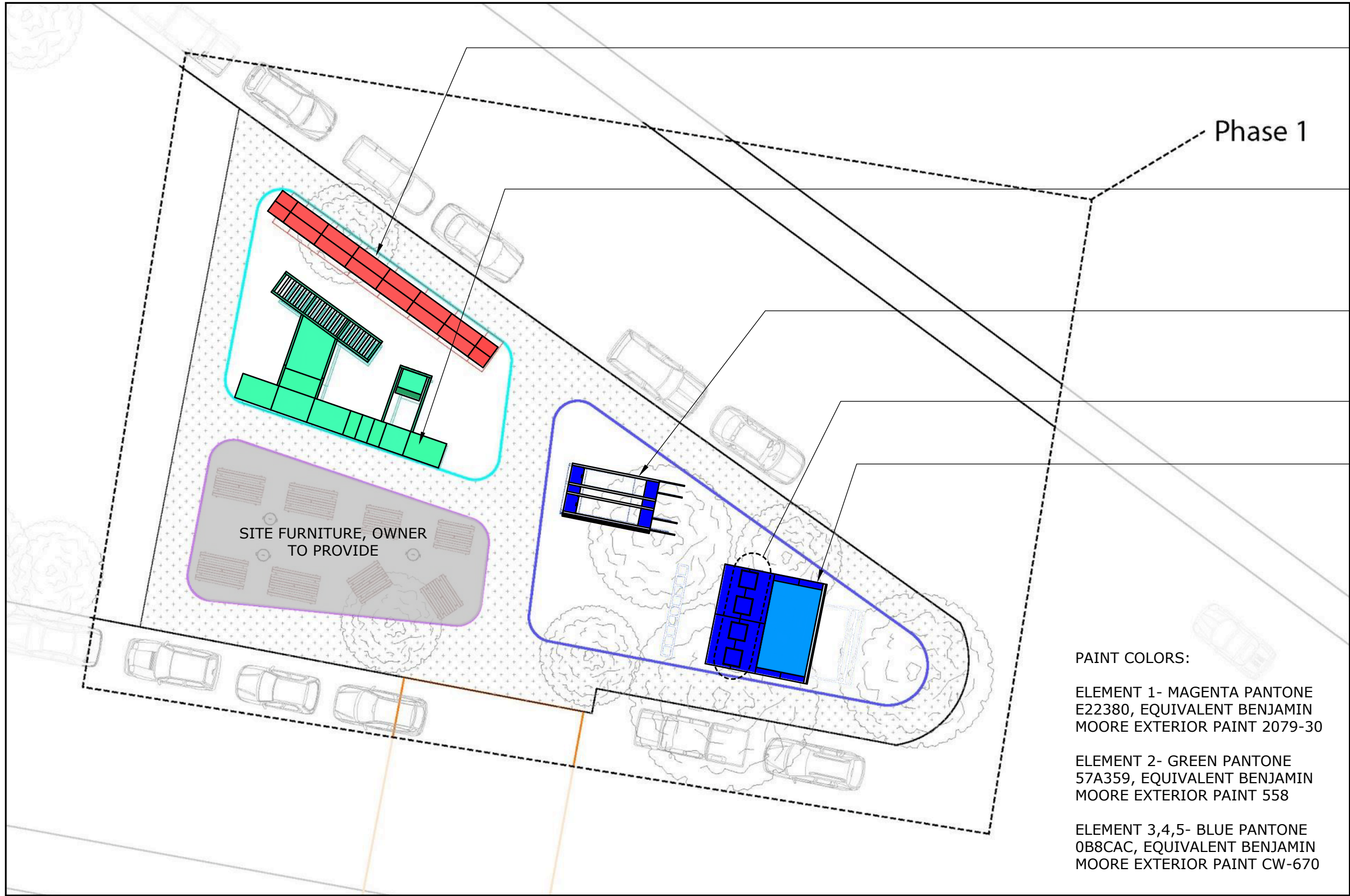








LANDSCAPE SCULPTURES WOODLAND PARK COMMUNITIES



• ELEMENT 1
SEE SSD 200

• ELEMENT 2
SEE SSD300

• ELEMENT 3
SEE SSD400

• ELEMENT 4
SEE SSD 500

• ELEMENT 5
SEE SSD 500

Phase 1

SITE FURNITURE, OWNER
TO PROVIDE

PAINT COLORS:

ELEMENT 1- MAGENTA PANTONE
E22380, EQUIVALENT BENJAMIN
MOORE EXTERIOR PAINT 2079-30

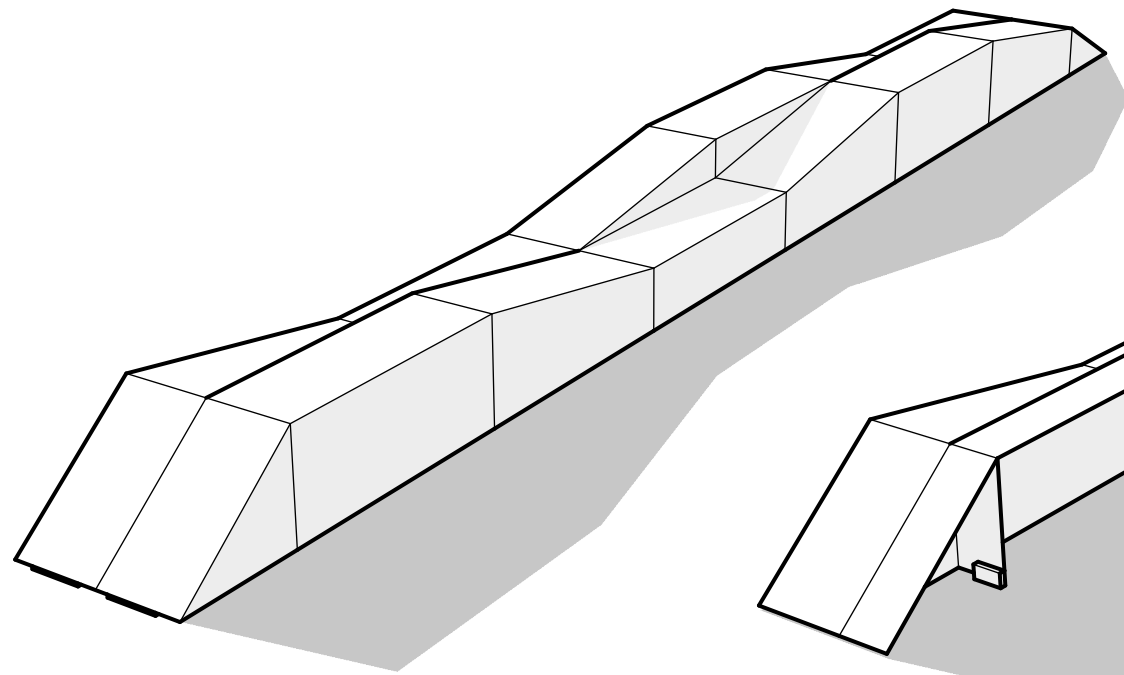
ELEMENT 2- GREEN PANTONE
57A359, EQUIVALENT BENJAMIN
MOORE EXTERIOR PAINT 558

ELEMENT 3,4,5- BLUE PANTONE
0B8CAC, EQUIVALENT BENJAMIN
MOORE EXTERIOR PAINT CW-670

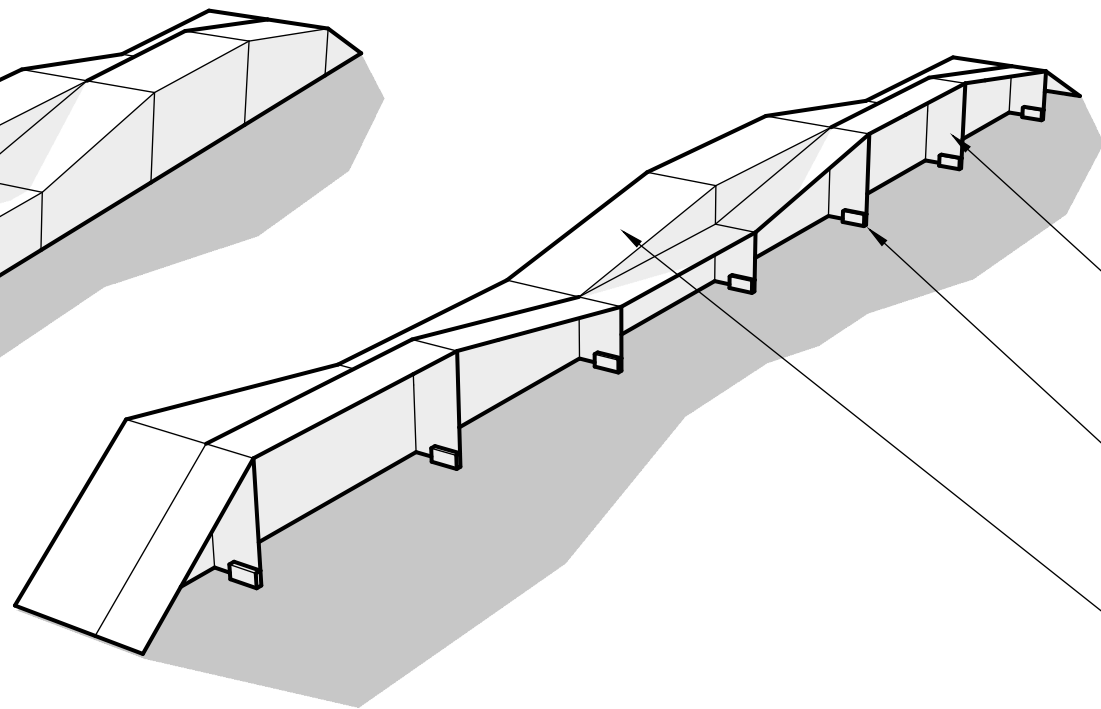
ISSUED BY: TYLER PEW

DATE: 08-17-18

SCALE: NTS



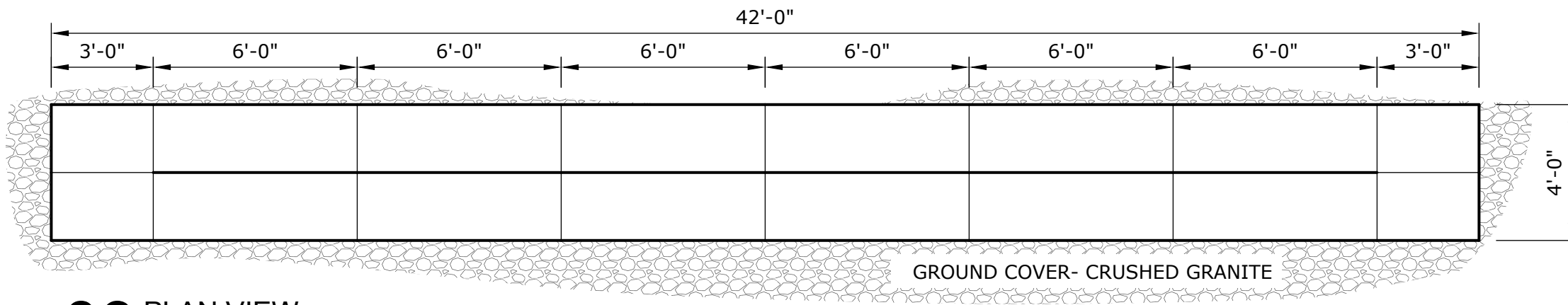
01 PERSPECTIVE
SCALE: N.T.S.



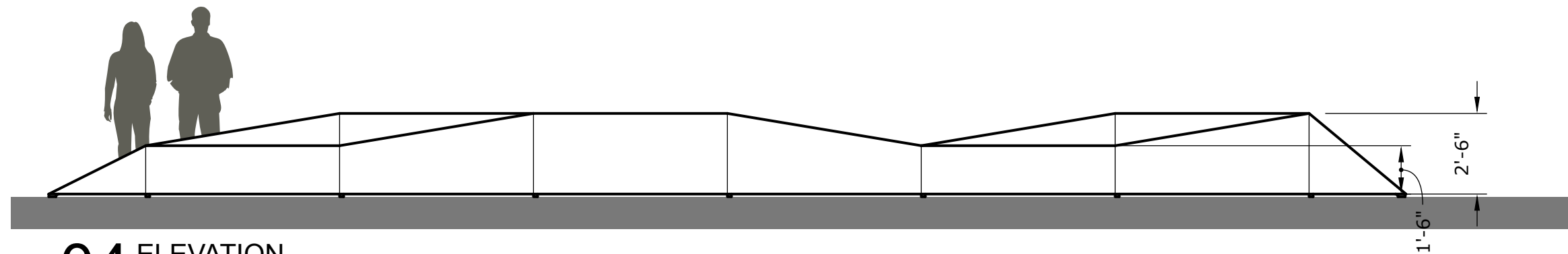
02 PERSPECTIVE WITH SECTION CUT
SCALE: N.T.S.

NOTE: SECTIONS TO BE FASTENED WITH 3/8" ZINC THRU BOLTS

- INTERIOR WOODEN FRAME, 3/4" ACX DOUG FIR
- 2" PRESSURE TREATED BLOCKS TO HOLD STRUCTURE FROM GROUND 1/2"
- 3/4" ACX PLY TYPICAL, SANDED AND FINISHED WITH PAINT AND SEALER. ALL TOP SURFACES TO BE FINISHED WITH NON SLIP TEXTURE PAINT TO MATCH



03 PLAN VIEW
SCALE: 1/4" = 1'-0"



04 ELEVATION
SCALE: 1/4" = 1'-0"

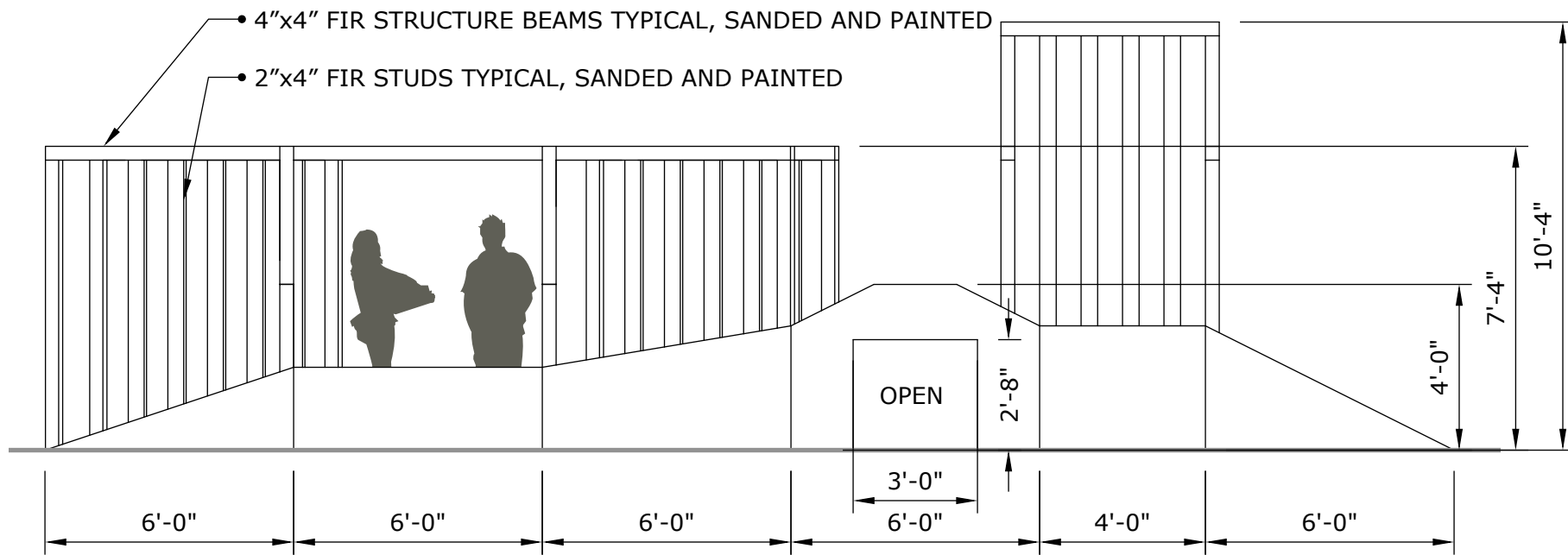
LANDSCAPE SCULPTURES
WOODLAND PARK COMMUNITIES

ISSUED BY: TYLER PEW

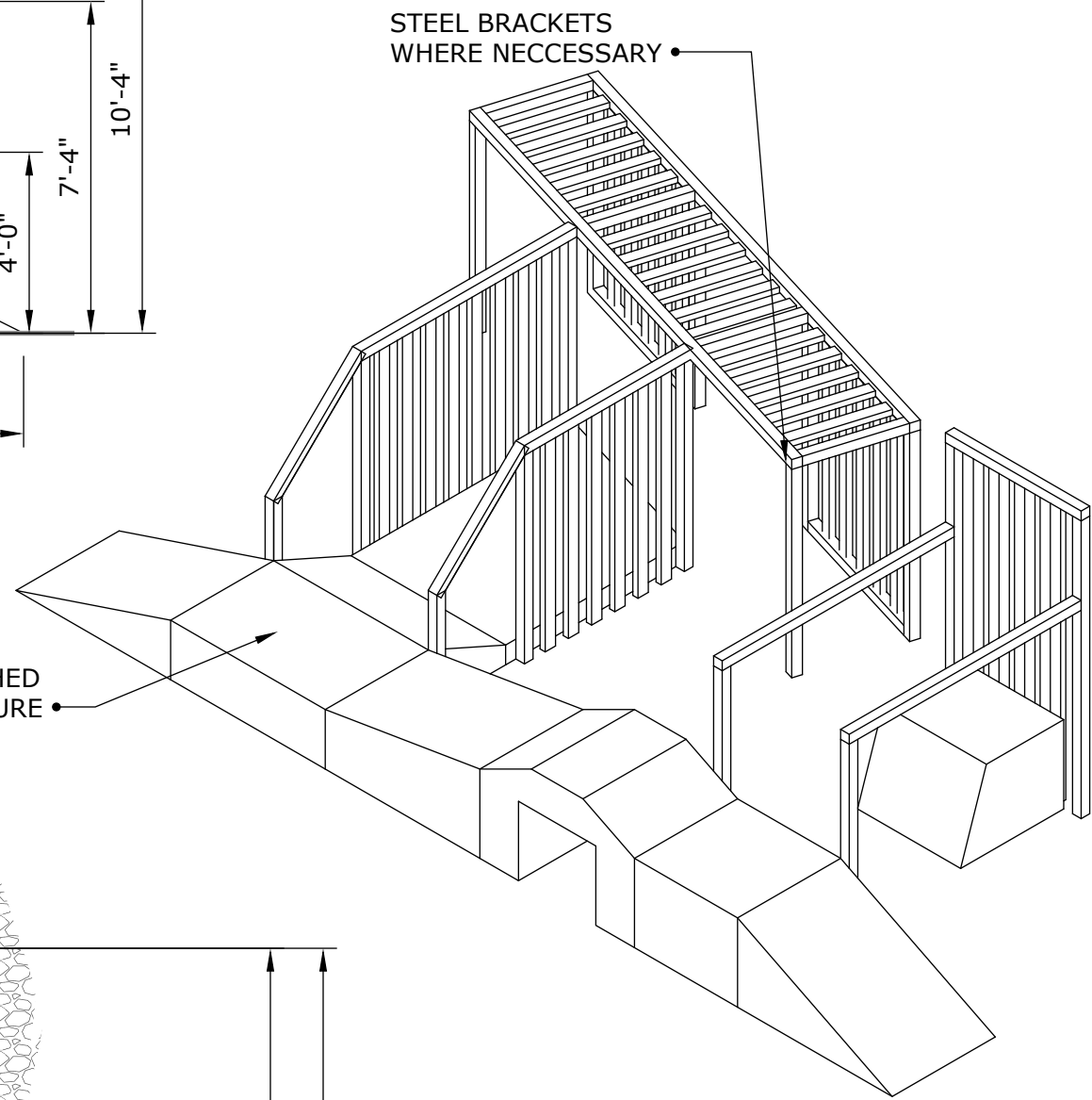
DATE: 08-17-18

SCALE: NTS

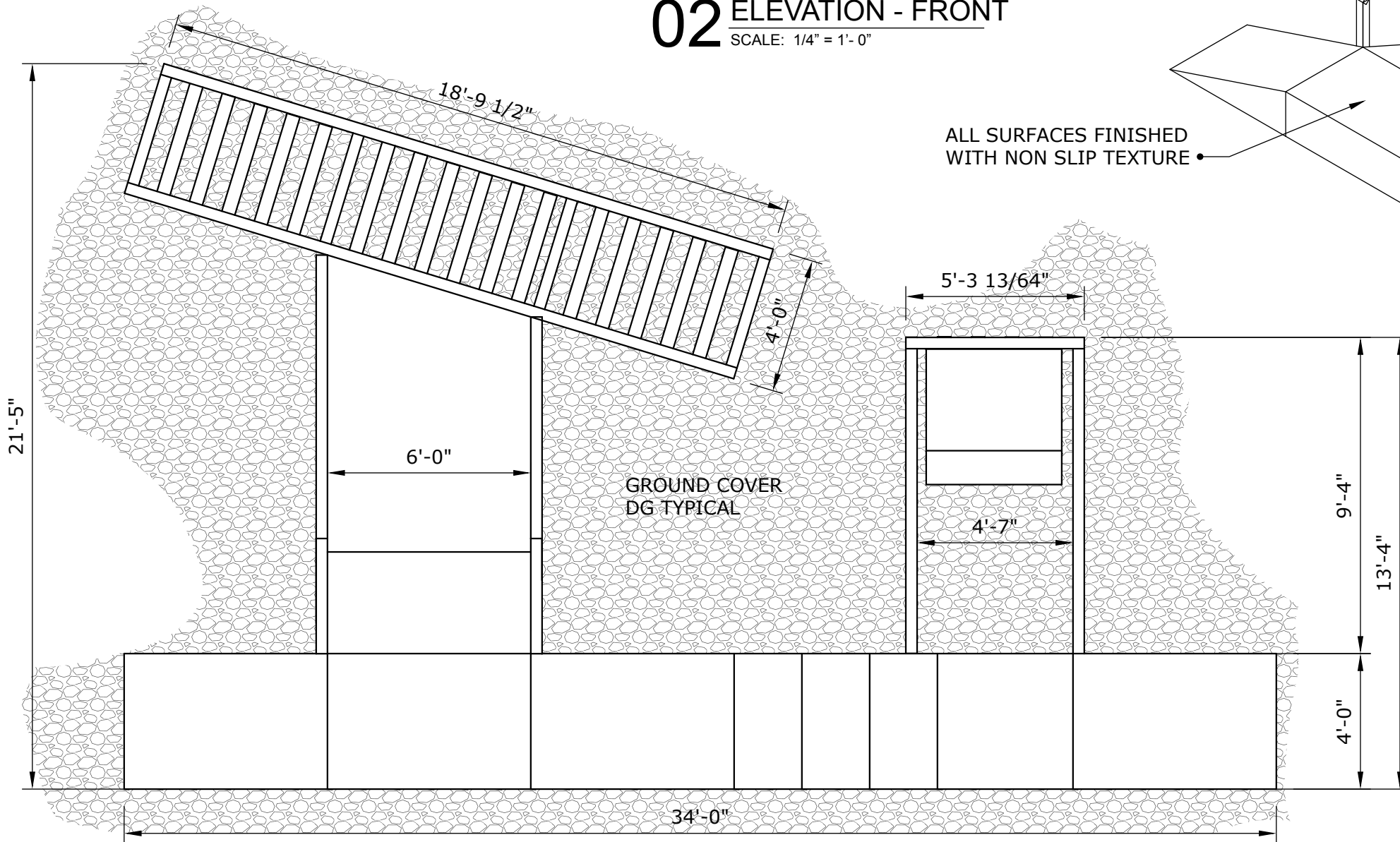
SDD 200
ELEMENT 1



02 ELEVATION - FRONT
SCALE: 1/4" = 1'-0"



01 ORTHO VIEW
SCALE: 1/4" = 1'-0"



03 PLAN VIEW
SCALE: 1/4" = 1'-0"

LANDSCAPE SCULPTURES
WOODLAND PARK COMMUNITIES

NOTE: ALL WOOD SURFACES AND EXPOSED FRAMING ELEMENTS TO BE SANDED SMOOTH AND FINISHED WITH SPECIFIED PAINT COLORS

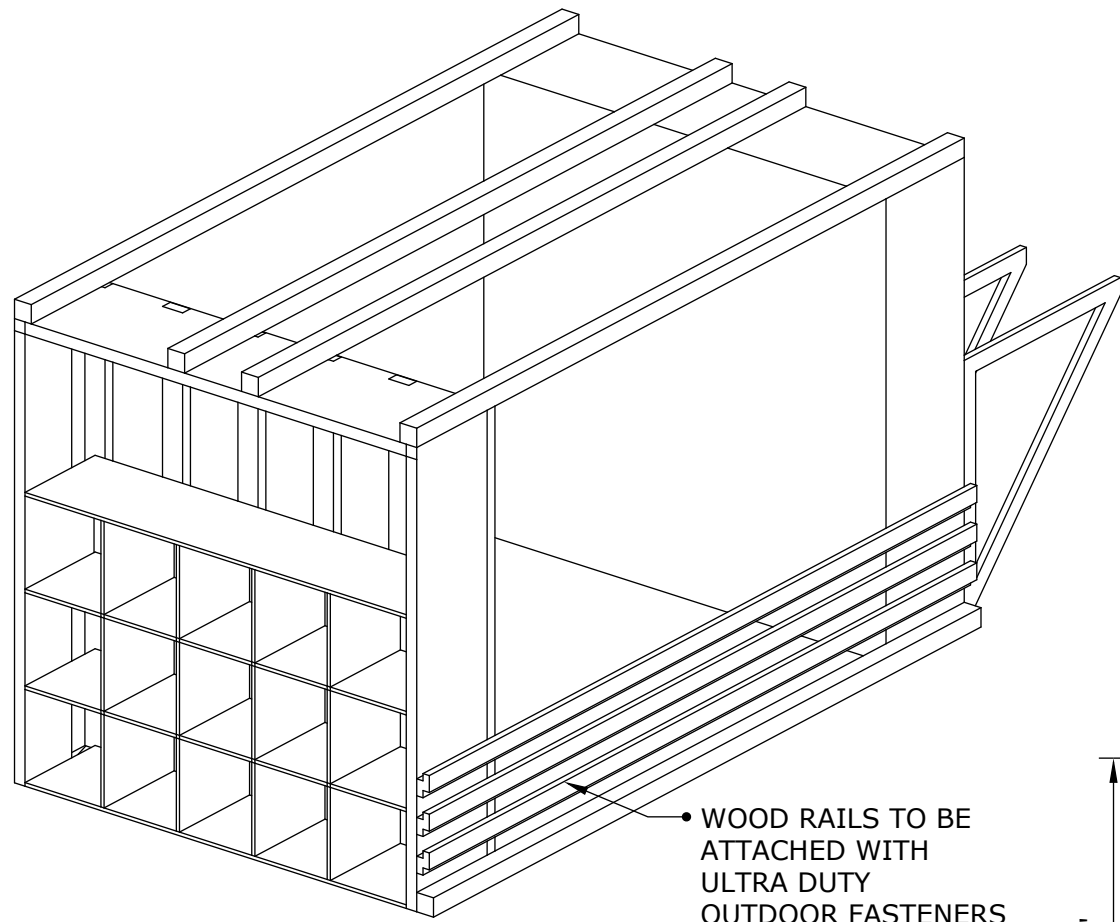
STEEL BRACKETS WHERE NECESSARY

ALL SURFACES FINISHED WITH NON SLIP TEXTURE

ISSUED BY: TYLER PEW

DATE: 08-17-18

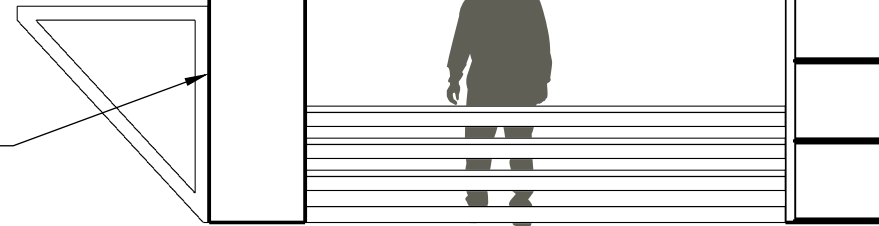
SCALE: NTS



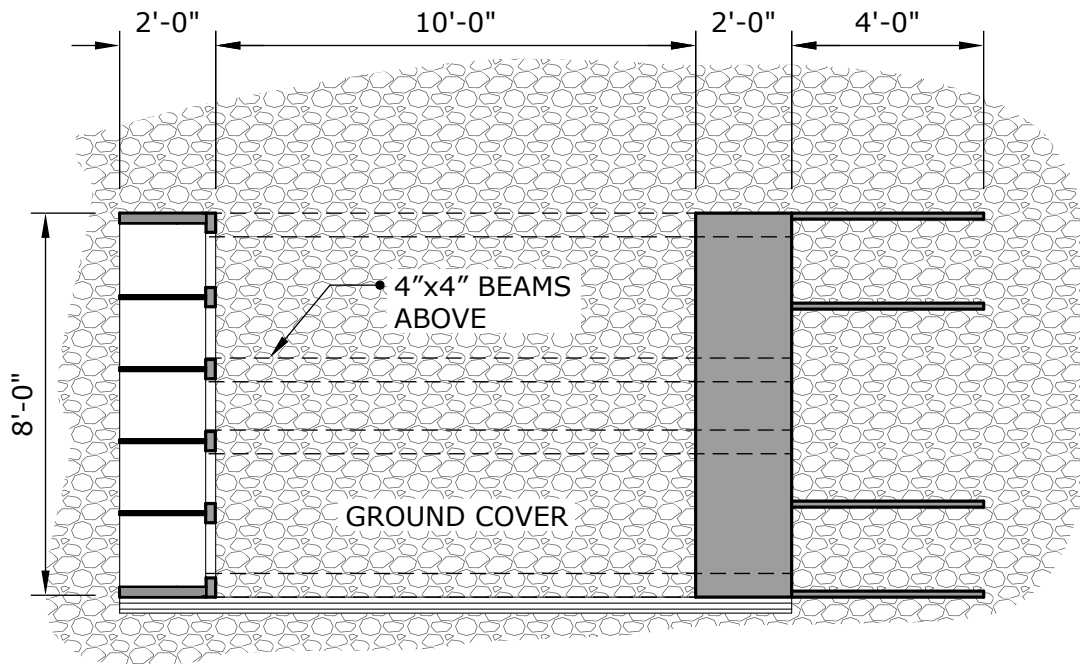
01 ORTHO VIEW
SCALE: N.T.S.

WOOD RAILS TO BE ATTACHED WITH ULTRA DUTY OUTDOOR FASTENERS

DIP BARS TO BE MOUNTED TO STRUCTURE WITH HEAVY DUTY FASTENERS AND STEEL BRACKETS WHERE NECESSARY



03 SECTION THRU
SCALE: 1/4" = 1'-0"

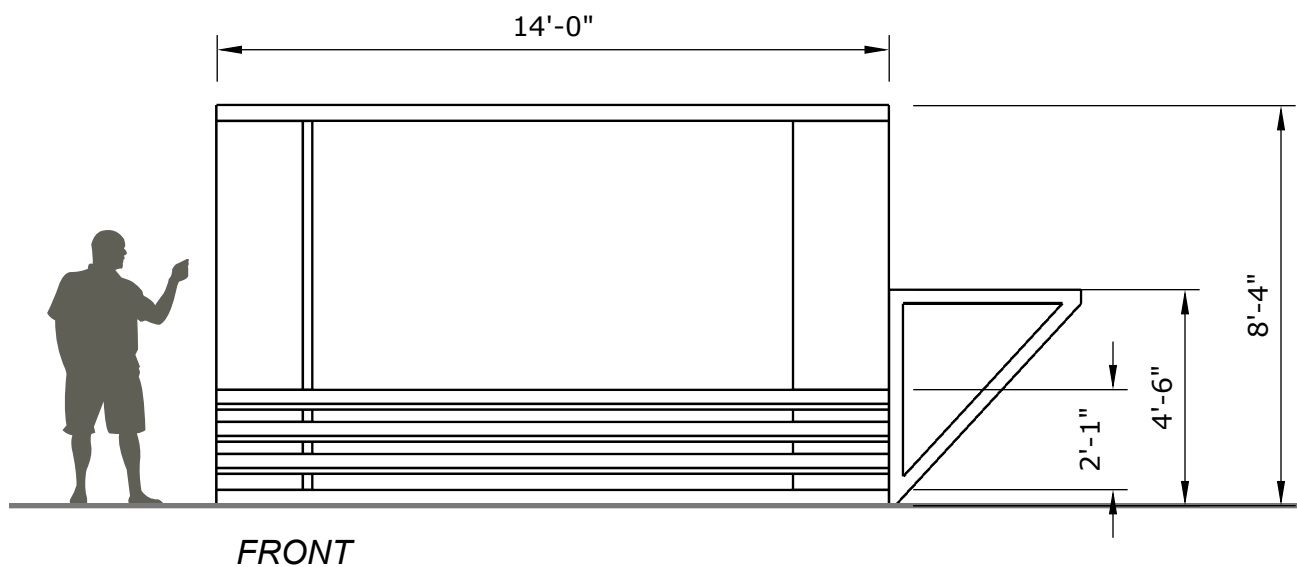


02 PLAN VIEW
SCALE: 1/4" = 1'-0"

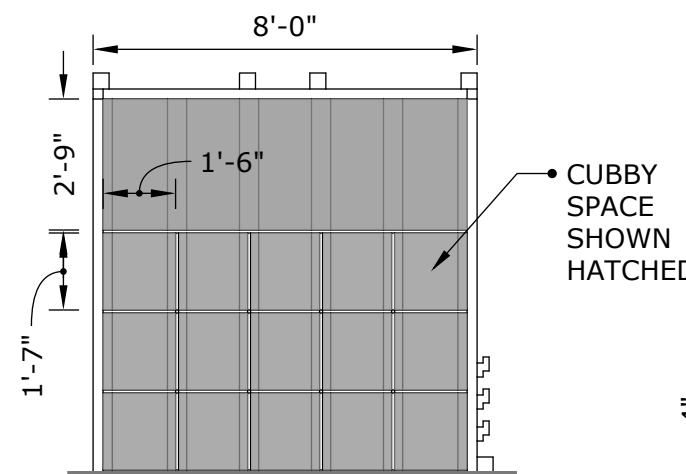
NOTE: ALL WOOD SURFACES AND EXPOSED FRAMING ELEMENTS TO BE SANDED SMOOTH AND FINISHED WITH SPECIFIED PAINT COLORS

NOTE: ALL WOOD SURFACES TOUCHING GROUND TO BE PRESSURE TREATED

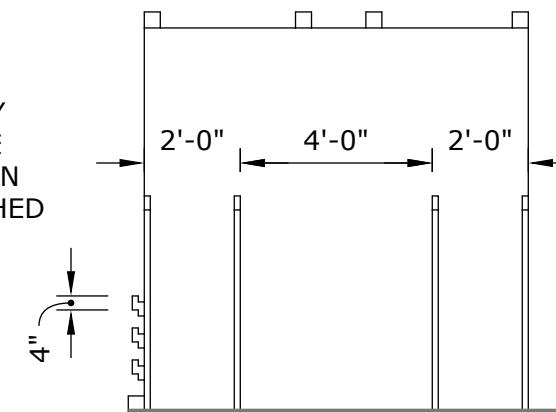
LANDSCAPE SCULPTURES
WOODLAND PARK COMMUNITIES



FRONT



SIDE- CUBBIES

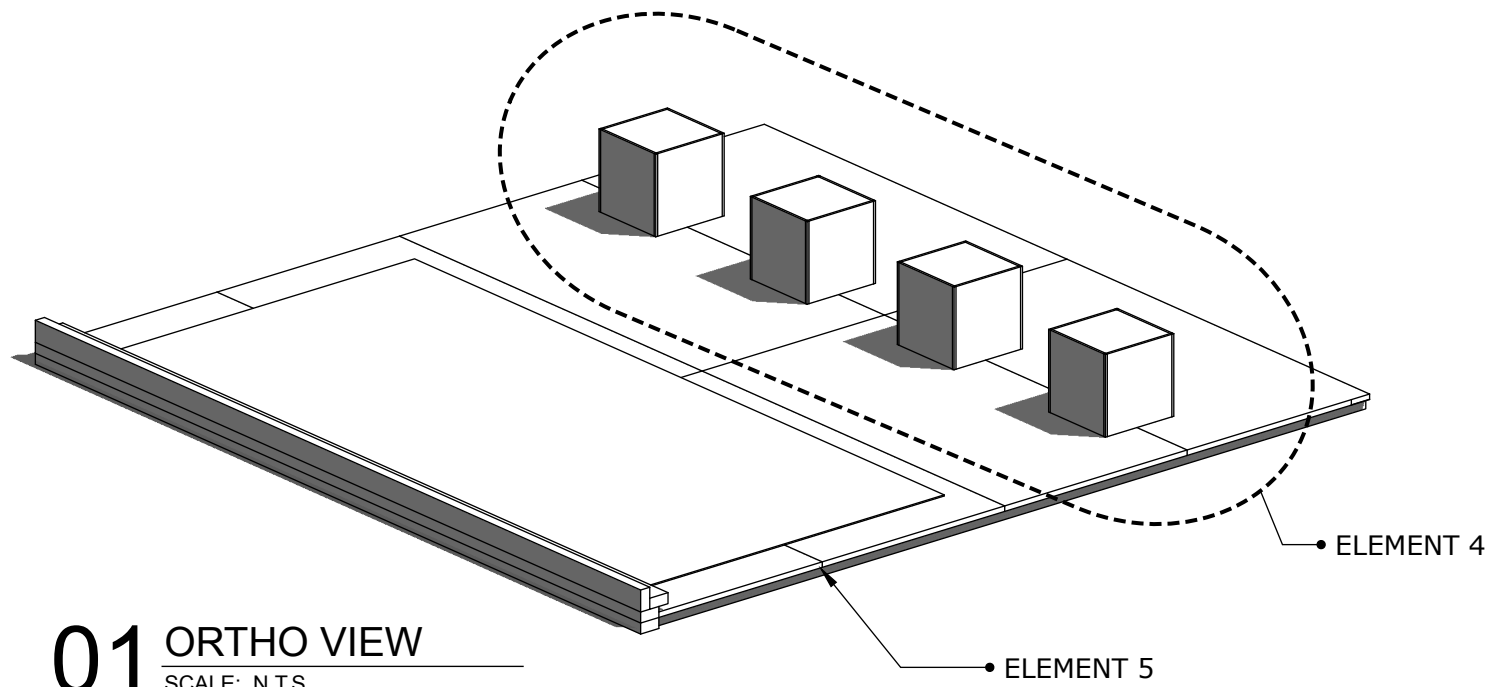


SIDE- DIP BARS

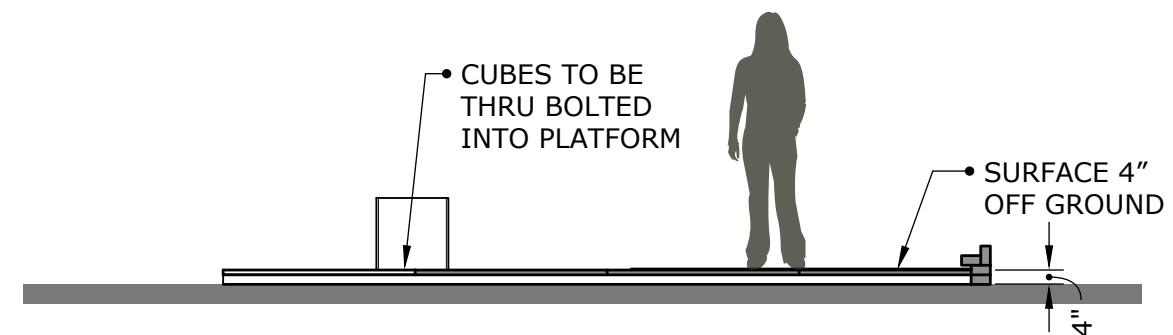
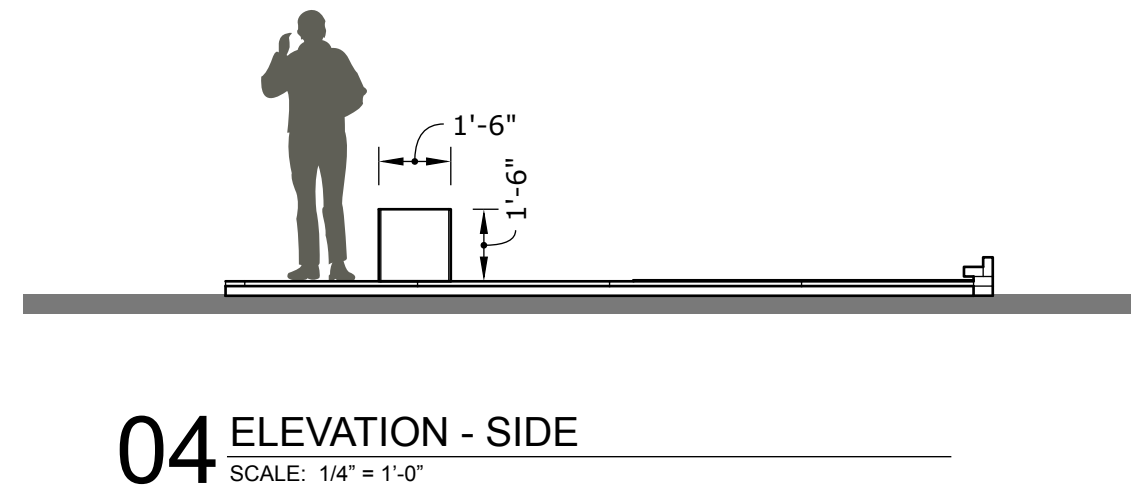
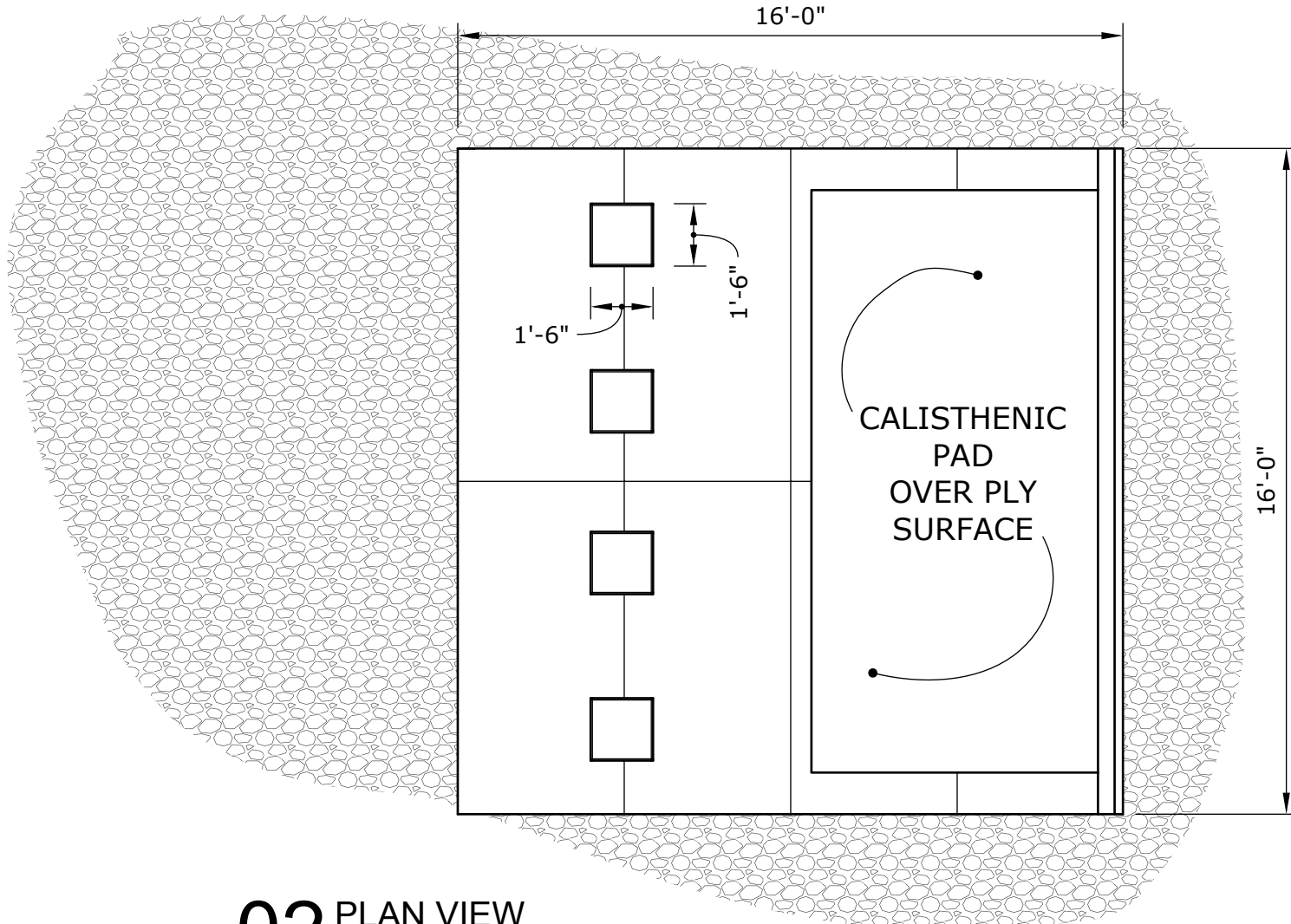
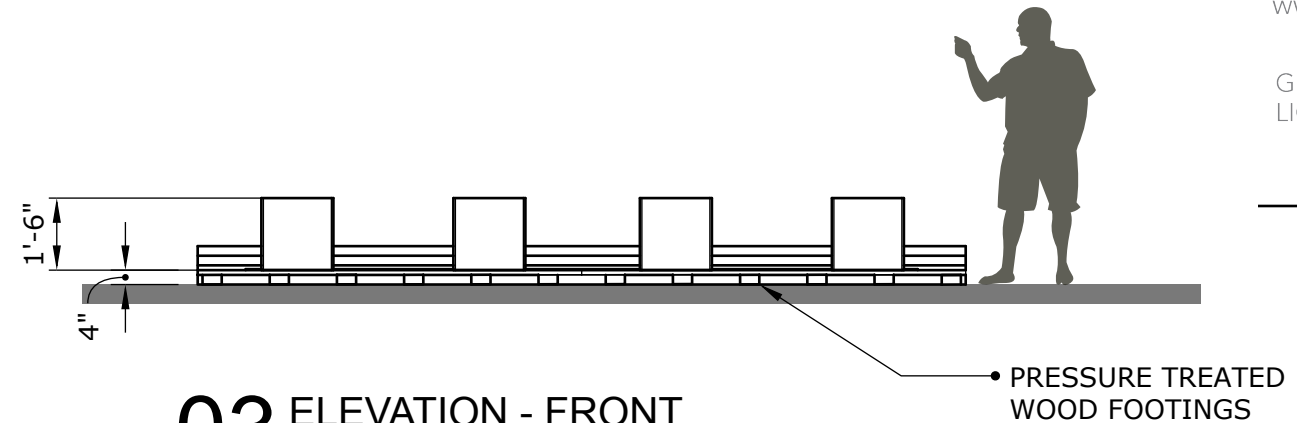
ISSUED BY: TYLER PEW

DATE: 08-17-18

SCALE: NTS



NOTE: ALL WOOD SURFACES TO BE
SANDED AND FINISHED WITH PAINT
AND SEALER, PAINT COLOR
BENJAMIN MOORE CW-670



LANDSCAPE SCULPTURES
WOODLAND PARK COMMUNITIES

ISSUED BY: TYLER PEW

DATE: 08-17-18

SCALE: NTS

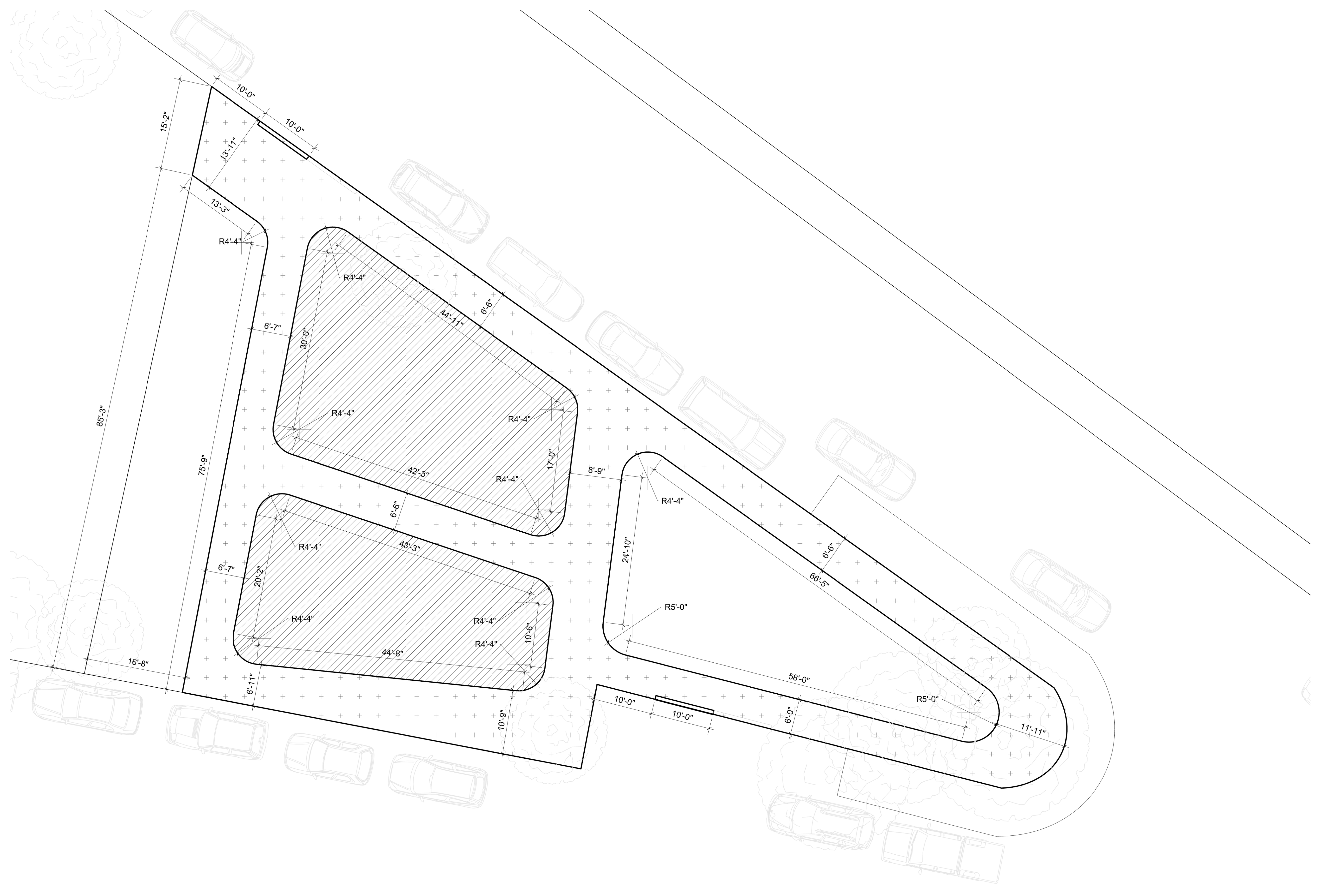
SDD 500
ELEMENT 4 & 5











GENERAL NOTES

- SPECIFIED DIMENSION ARE TO BE WITHIN 6" +/-.
- ALL PATH OF TRAVEL SHOULD BE 6' CLEAR.

KEY NOTES

LEGEND

NO.	DESCRIPTION	DATE
00	-	YY.MM.DD

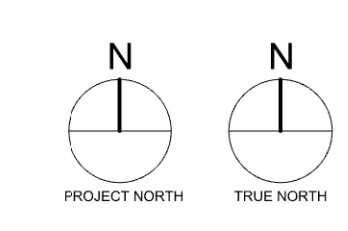
PLAN KEY:

ISSUED BY: TYLER PEW

DATE: 18.07.26

SCALE: N/A

NORTH SITE PHASE 1 SITE PLAN DIM



GENERAL NOTES

- REMOVAL OF ALL STUMPS .
- RETAINING STRIPS TO HOLD BACK THE D.G.
- SLOPE TO DRAIN.

KEY NOTES

- A** WHEELCHAIR ACCESSIBLE ENTRANCE WITH ADA RECOMMENDED SLOPE 1:12
- B** INSURE SLOPE AWAY FROM ACCESSIBLE ENTRY
- C** NEW GATE
- D** NEW CHAIN LINK FENCE 6' HIGH
- E** EXISTING WOOD FENCE

LEGEND

- 1** EXERCISE AREA - Blue Path Fines (D.G)
- 2** FAMILY AREA - Gold Path Fines (D.G)
- 3** ACTIVITY AREA - Gold Path Fines (D.G)
- 4** WALKWAY - Grey Path Fines (D.G)
- 5** DIRT FILLED AREA FOR FUTURE DEVELOPEMENT AND ACTIVATED BY TEMPERORY PLANTERS

NO.	DESCRIPTION	DATE
00	DRAFT	18.07.26

PLAN KEY:

ISSUED BY: TYLER PEW

DATE: 18.07.26

SCALE: N/A

