

City of East Palo Alto

2024 Storm Update Informational Presentation



Humza Javed
Public Works Director
February 20 2024

Agenda

- Preparation
- Response
- Community Resources
- Police Department Update

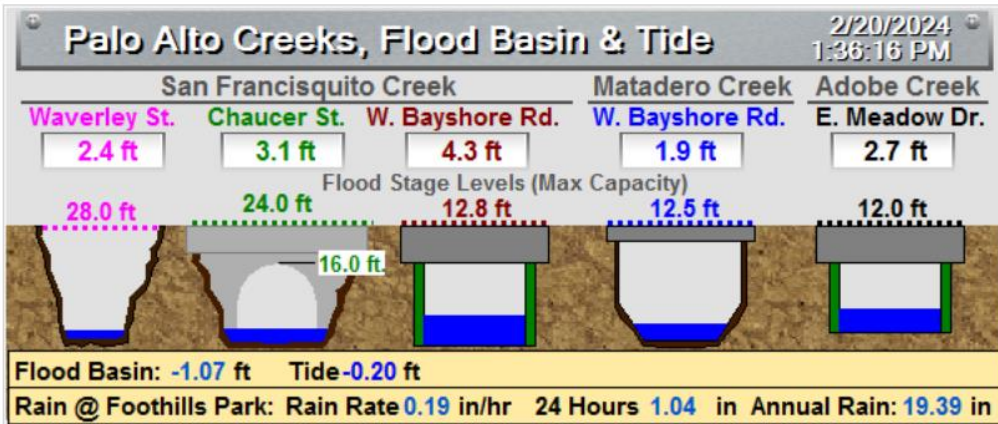


2024 Storm Season

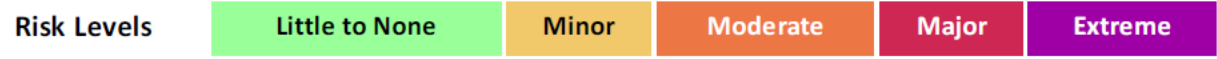
At Pope / Chaucer Bridge



Creek Monitor



	Mon 2/19	Tue 2/20	Wed 2/21	Thu 2/22	Fri 2/23	Sat 2/24	Sun 2/25
North Bay Santa Rosa, Napa, San Rafael	Rain / Flood Wind Thunderstorms	Rain	Lingering Showers			Rain	Rain
SF Peninsula Half Moon Bay, San Mateo, SFO	Rain / Flood Wind Thunderstorms	Rain	Lingering Showers			Rain	Rain
East Bay Oakland, Concord, Livermore	Rain Wind Thunderstorms	Rain	Lingering Showers			Rain	Rain
South Bay San Jose, Gilroy	Rain Wind Thunderstorms	Rain	Lingering Showers			Rain	Rain
Santa Cruz County Santa Cruz, Boulder Creek, Corralitos	Rain / Flood Wind Thunderstorms	Rain	Lingering Showers			Rain	Rain
Monterey & San Benito County	Rain / Flood Wind Thunderstorms	Rain	Lingering Showers			Rain	Rain



Storm Preparation and Response

- Proactive response
 - SF Creek Maintenance
 - Clear out storm vault at the end of Runnymede
 - Storm Drain System Maintenance
 - On-call Contracts
- Stream Flow Monitoring
- Emergency and Public Safety Team Coordination
- Collaboration (SFCJPA, MP, PA, VW, PD, MF)

Storm Preparation and Response

Sanbags

- 150 Tara Road
- Approx. 2000 bags



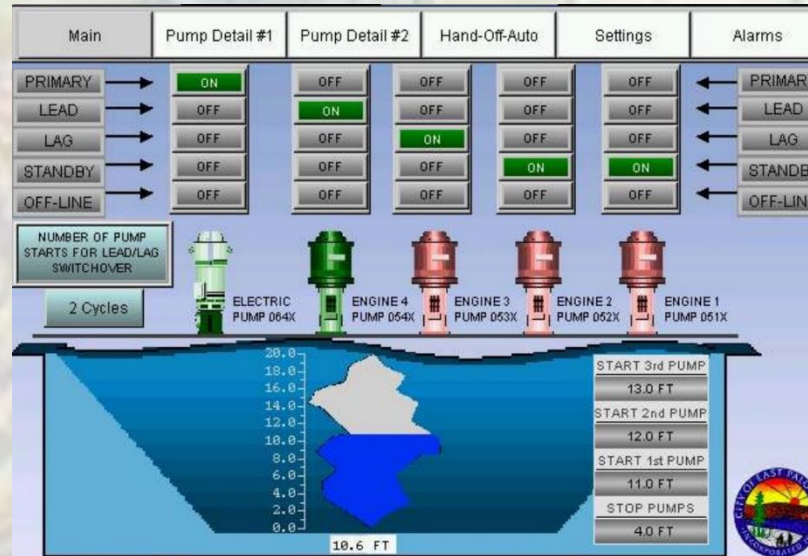
**CITY OF
EAST PALO ALTO**

**SAND BAGGING STATION
LIMIT 10 SANDBAGS PER HOUSEHOLD**

**150 TARA ROAD
FOR MORE INFORMATION PLEASE CONTACT:
650-853-3100**

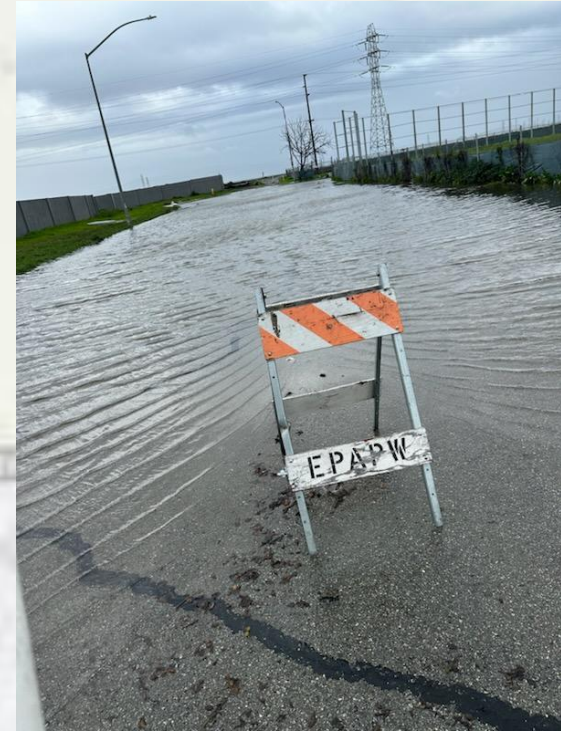
O'Connor Pump Station

- 5 pumps
- 1 dysfunctional



2024 Storm Season

- Localized flooding
- 1 down tree



Myrtle Street at Pulgas Avenue



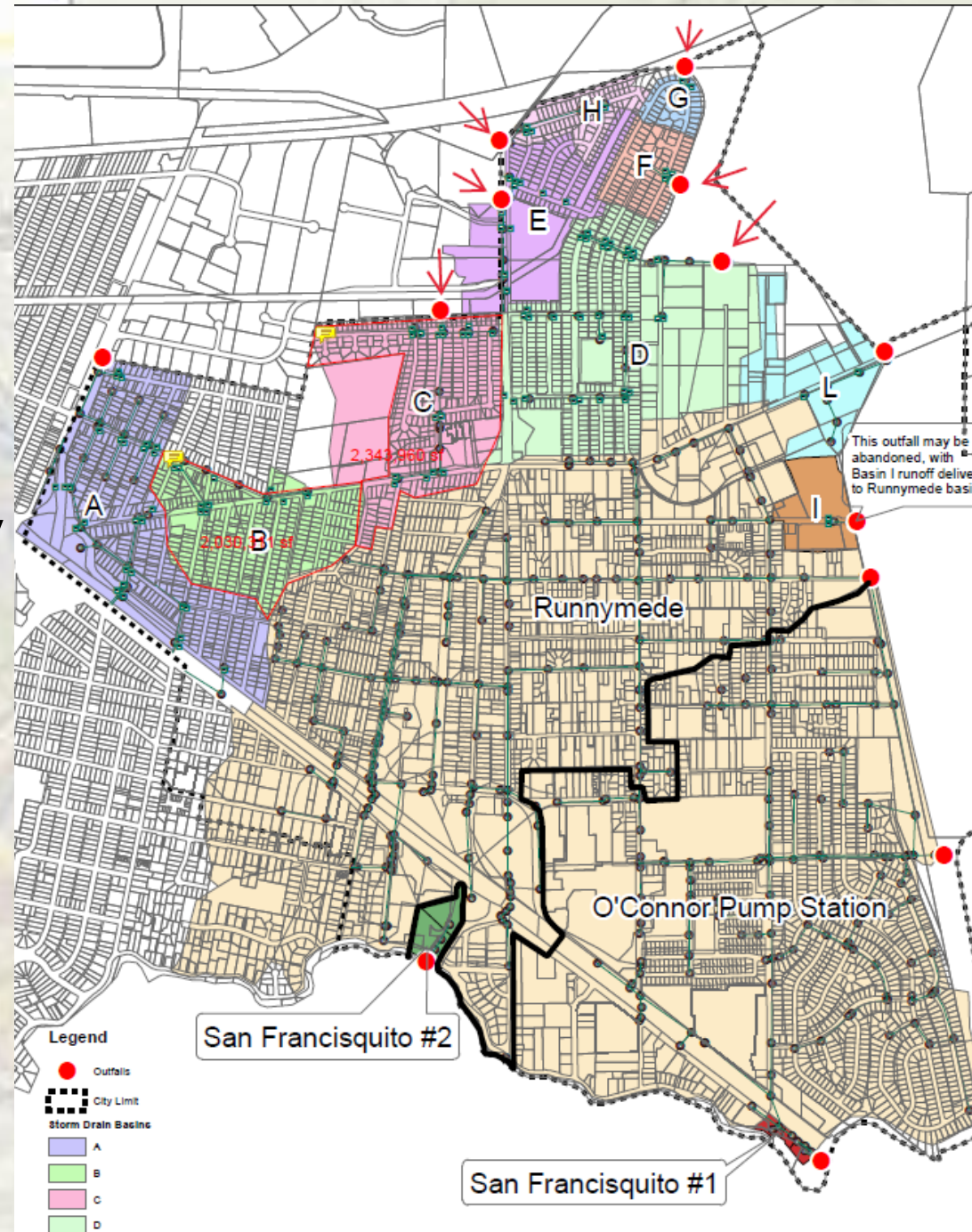
Before



After

Storm Drain Outfalls

- Inspection of outfalls on private property
- SWRCB Trash Capture regulation



Storm Drain Discharge Outfalls in Private Property at Purdue



Storm Drain Discharge Outfalls in Private Property at Stevens



Storm Drain Discharge Outfalls in Private Property at Fordham



How to report a problem

Important Phone Numbers and Websites to Report Storm-Related Hazards

For critical emergencies call 9-1-1

To report creek or tidal flooding, blocked storm drains, fallen trees, or other storm-related hazards:

East Palo Alto - 650-368-1421;

CityofEPA.org/publicworks/page/stormflood-protection-disaster-preparation

Palo Alto - 650-329-2413;

CityofPaloAlto.org/StormUpdate

Menlo Park - 650-330-6300;

MenloPark.gov/Storms

Valley Water - 408-630-2378;

ValleyWater.org/flooding-safety/flood-ready

OneShoreline - 650-844-8310;

OneShoreline.org

SFCJPA 650-643-1450;

SFCJPA.org

**Sign up for official emergency alerts from
San Mateo County Emergency
Management**

<https://www.smcgov.org/node/388760/SMC-Alert>

Flood Protection

<https://www.cityofepa.org/publicworks/page/flood-protection-disaster-preparation>

- Emergency Contact numbers
- Evacuation checklist
- Creek Monitoring
- Important links

The screenshot shows the City of East Palo Alto website. At the top left is the city logo with the text "City of EAST PALO ALTO California". To the right are navigation links: "I WANT TO", "DEPARTMENTS", "GOVERNMENT", "BUSINESS", and "REGISTER TO VOTE". A search bar is located in the top right. Below the navigation is a dark blue header with the text "PUBLIC WORKS". A vertical sidebar on the left contains a list of menu items: "ADA Compliance and Transition Plan", "Capital Improvement Project in Progress", "City-Wide Development Impact Fee Program", "Engineering Applications and Forms", "Flood Protection & Disaster Preparation" (highlighted with a red dot), "Green Infrastructure", "MSR Process", and "Mobility Study". The main content area is titled "Flood Protection & Disaster Preparation" and includes sections for "How to Report a Problem", "For critical emergencies call 9-1-1", and "Flood Map Zones". A small inset image shows a flooded area. At the bottom right, there is a "NATURAL SERVICES" section with a map.

Storm Monitoring and Resources for more information

Resources for More Information

- Flood Ready - <https://www.valleywater.org/flooding-safety/flood-ready>
- Stream and Reservoir gauges - <https://alert.valleywater.org/>
- Sandbags - <https://www.valleywater.org/flooding-safety/flood-ready/sandbags>
- Local Stream gauges - <https://www.cityofpaloalto.org/Departments/Public-Works/Engineering-Services/Creek-Monitor-Cam>
- SFCJPA rain and streamflow gauges - <https://www.sfcjpa.org/rain-and-streamflow-gages>

EPA Police Department Update

- The East Palo Alto Police Department Police Department responded to multiple calls for service regarding downed power lines and trees. There were no reports of injuries due to these calls. A family that was displaced due to a tree and wires falling on their motorhome was provided temporary accommodations.
- City departments were able to work together to successfully handle the calls for service related to the storms. Continued staff training to occur in order to handle disasters.
- Daily monitoring of the National Weather service

Thank you