



CITY OF EAST PALO ALTO, CALIFORNIA

**PLANS, SPECIFICATIONS AND ESTIMATES (PS&E) FOR
STREETSWEeping SIGN PROJECT**

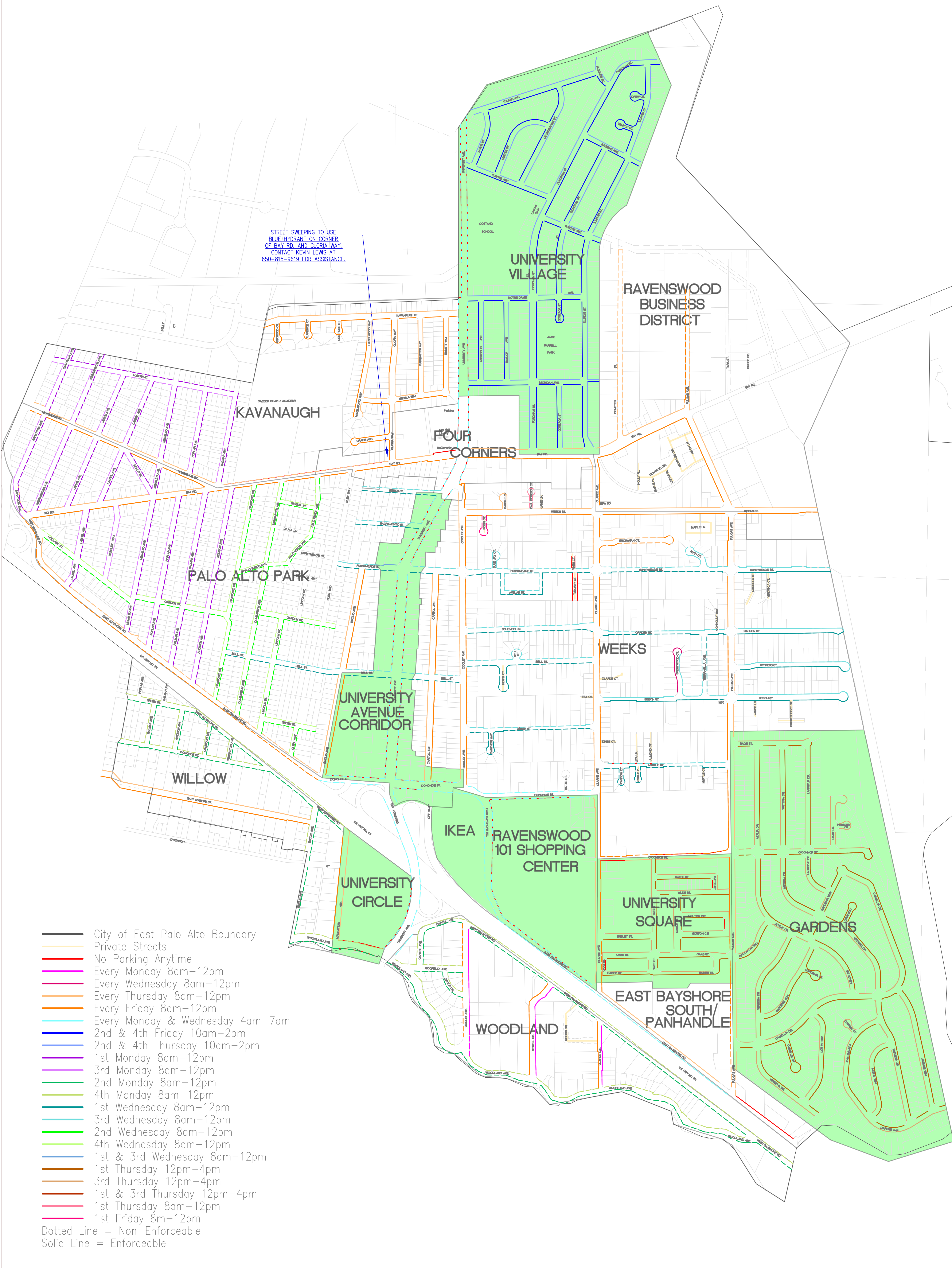
PUBLIC WORKS PROJECT NO. SD-04

**PREPARED BY CITY OF EAST PALO ALTO
PUBLIC WORKS ENGINEERING DIVISION**

PLANS (LOCATION AND SCHEDULE MAPS)

SEE FOLLOWING PAGES

STREET SWEEPING TO USE
BLUE HYDRANT ON CORNER
OF BAY RD. AND GLORIA WAY.
CONTACT KEVIN LEWIS AT
650-815-9619 FOR ASSISTANCE.



- City of East Palo Alto Boundary
- Private Streets
- No Parking Anytime
- Every Monday 8am–12pm
- Every Wednesday 8am–12pm
- Every Thursday 8am–12pm
- Every Friday 8am–12pm
- Every Monday & Wednesday 4am–7am
- 2nd & 4th Friday 10am–2pm
- 2nd & 4th Thursday 10am–2pm
- 1st Monday 8am–12pm
- 3rd Monday 8am–12pm
- 2nd Monday 8am–12pm
- 4th Monday 8am–12pm
- 1st Wednesday 8am–12pm
- 3rd Wednesday 8am–12pm
- 2nd Wednesday 8am–12pm
- 4th Wednesday 8am–12pm
- 1st & 3rd Wednesday 8am–12pm
- 1st Thursday 12pm–4pm
- 3rd Thursday 12pm–4pm
- 1st & 3rd Thursday 12pm–4pm
- 1st Thursday 8am–12pm
- 1st Friday 8m–12pm
- Dotted Line = Non-Enforceable
- Solid Line = Enforceable



Legend:

- Existing Poles
- Proposed Poles

NO.	REVISIONS	DATE	
1			
2			
3			
4			
5			
6			
7			
8			
9			
10			
DESIGNED BY: AB		DRAWN BY: AB	
PREPARED FOR: CITY OF EAST PALO ALTO ENGINEERING DEPARTMENT SAN MATEO COUNTY, CALIFORNIA			
		KAVANAUGH PLACEMENT STREET SWEEPING SIGN PROJECT	
TITLE: SHEET 1 OF 11			
DATE: 3/4/2020 JOB NO.:			



Legend:

- Existing Poles
- Proposed Poles

	NO.	REVISIONS	DATE
DESIGNED BY: AB			
DRAWN BY: AB			
PREPARED FOR: CITY OF EAST PALO ALTO ENGINEERING DEPARTMENT SAN MATEO COUNTY, CALIFORNIA			
TITLE: PALO ALTO PARK PLACEMENT STREET SWEEPING SIGN PROJECT			
SHEET 2 OF 11			
DATE: 3/4/2020 JOB NO.:			



Legend:

- Existing Poles
- Proposed Poles

NO.	REVISIONS	DATE

DESIGNED BY: AB
 DRAWN BY: AB

PREPARED FOR:
CITY OF EAST PALO ALTO
 ENGINEERING DEPARTMENT
 SAN MATEO COUNTY, CALIFORNIA



TITLE:
PALO ALTO PARK PLACEMENT
STREET SWEEPING SIGN PROJECT

SHEET 3
 OF
11
 DATE: 3/4/2020
 JOB NO.:



Legend:

- Existing Poles
- Proposed Poles

NO.	REVISIONS	DATE

DESIGNED BY: AB
 DRAWN BY: AB

PREPARED FOR:
CITY OF EAST PALO ALTO
 ENGINEERING DEPARTMENT
SAN MATEO COUNTY, CALIFORNIA



TITLE:
PALO ALTO PARK PLACEMENT
STREET SWEEPING SIGN PROJECT


SHEET 4
 OF
11

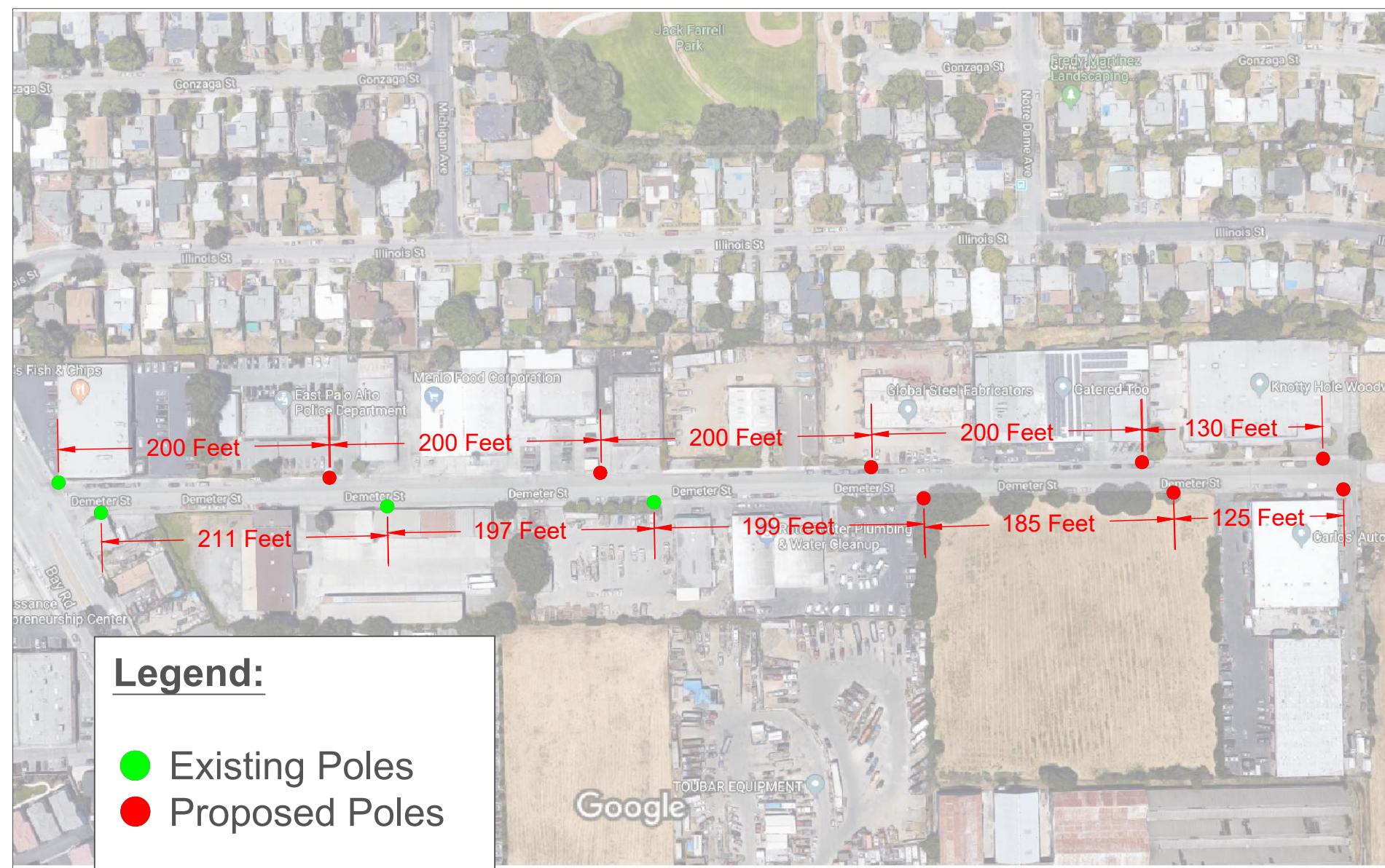
DATE: 3/4/2020
 JOB NO.:

Legend:

- Existing Poles
- Proposed Poles



DESIGNED BY: AB		NO.	REVISIONS	DATE
DRAWN BY: AB				
PREPARED FOR: CITY OF EAST PALO ALTO ENGINEERING DEPARTMENT SAN MATEO COUNTY, CALIFORNIA				
				
TITLE: FOUR CORNERS PLACEMENT STREET SWEEPING SIGN PROJECT				
SHEET 5 OF 11				
DATE: 3/4/2020 JOB NO.:				



Legend:

- Existing Poles
- Proposed Poles

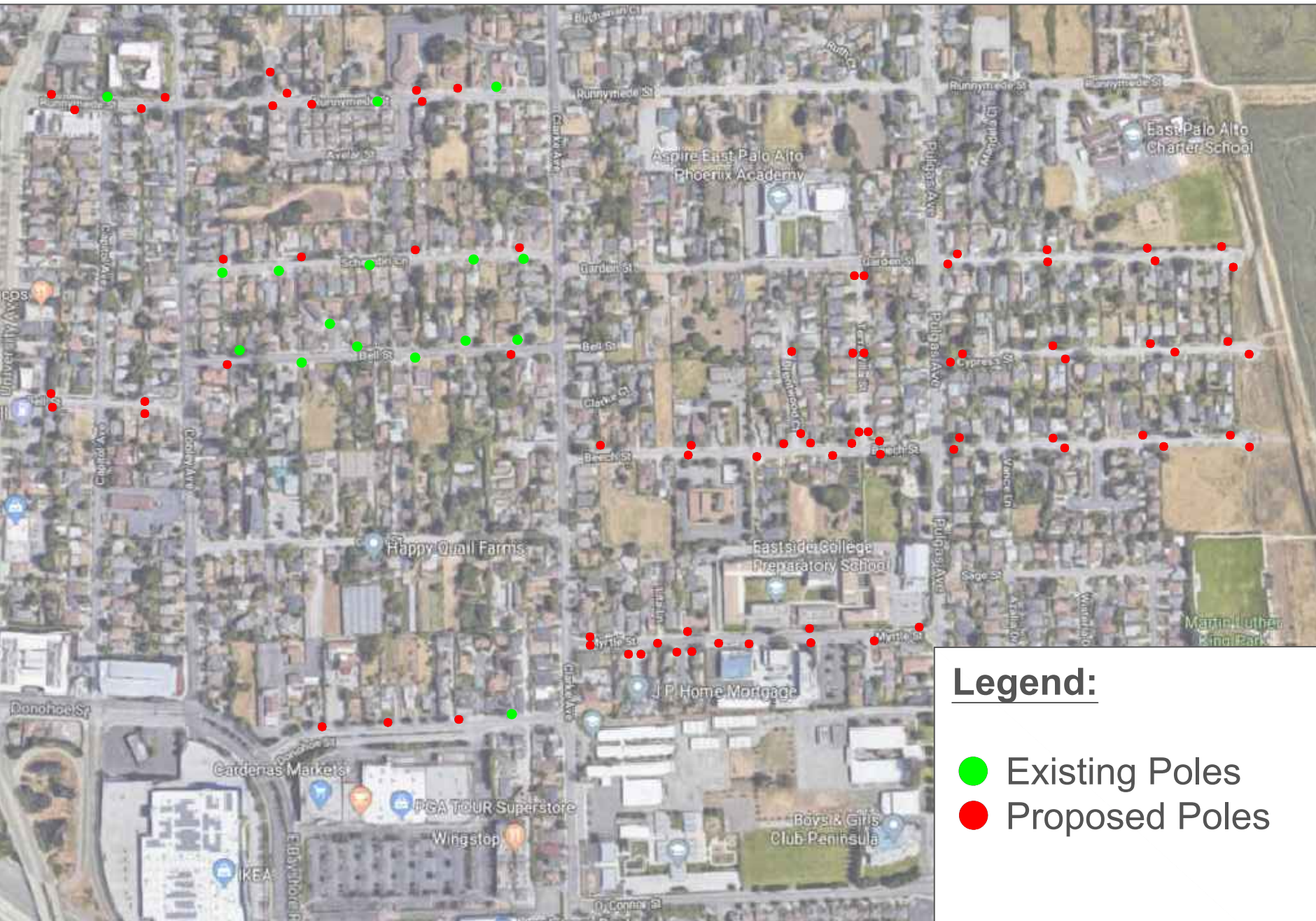
NO.	REVISIONS	DATE

DESIGNED BY: AB
 DRAWN BY: AB

PREPARED FOR:
CITY OF EAST PALO ALTO
 ENGINEERING DEPARTMENT
SAN MATEO COUNTY, CALIFORNIA



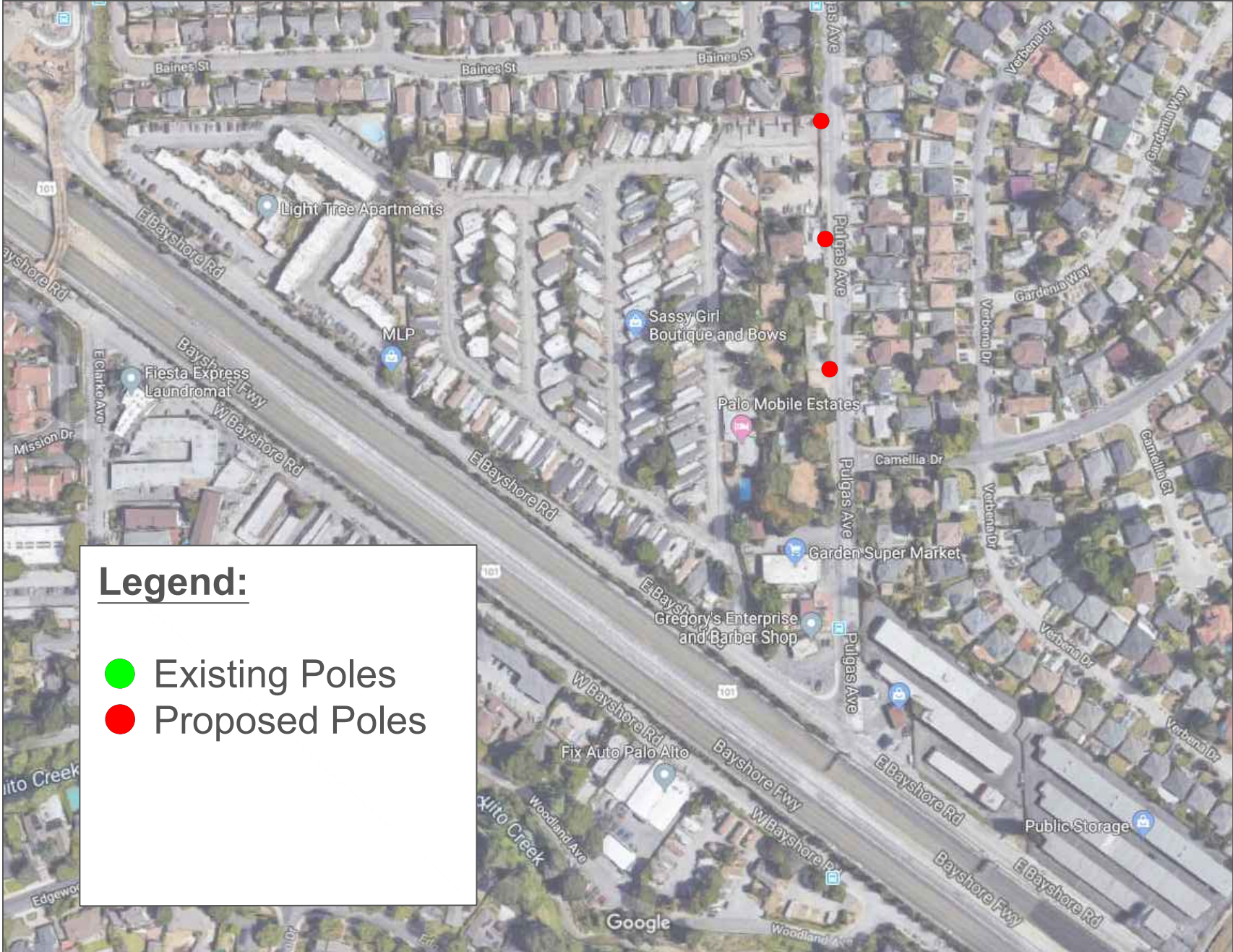
TITLE:
RAVENSWOOD PLACEMENT
STREET SWEEPING SIGN PROJECT



Legend:

- Existing Poles
- Proposed Poles

<p>DESIGNED BY: AB</p> <p>DRAWN BY: AB</p>	<p>NO.</p> <p>REVISIONS</p> <p>DATE</p>
<p>PREPARED FOR:</p> <p>CITY OF EAST PALO ALTO ENGINEERING DEPARTMENT SAN MATEO COUNTY, CALIFORNIA</p>	
<p>TITLE:</p> <p>WEEKS PLACEMENT STREET SWEEPING SIGN PROJECT</p>	
<p>SHEET 8 OF 11</p>	
<p>DATE: 3/4/2020</p> <p>JOB NO.:</p>	



Legend:

- Existing Poles
- Proposed Poles

NO.	REVISIONS	DATE

DESIGNED BY: AB
 DRAWN BY: AB

PREPARED FOR:
CITY OF EAST PALO ALTO
 ENGINEERING DEPARTMENT
 SAN MATEO COUNTY, CALIFORNIA



TITLE:
BAYSHORE PANHANDLE PLACEMENT
STREET SWEEPING SIGN PROJECT

SHEET 9
 OF
11

DATE: 3/4/2020
 JOB NO.:

Legend:

- Existing Poles
- Proposed Poles



REVISIONS	
NO.	DATE

DESIGNED BY: AB
DRAWN BY: AB

PREPARED FOR:
CITY OF EAST PALO ALTO
ENGINEERING DEPARTMENT
SAN MATEO COUNTY, CALIFORNIA



TITLE:
WOODLAND PLACEMENT
STREET SWEEPING SIGN PROJECT

SHEET 10
OF
11

DATE: 3/4/2020
JOB NO.:



Legend:

- Existing Poles
- Proposed Poles

	NO.	REVISIONS	DATE
DESIGNED BY: DRAWN BY:		AB AB	
PREPARED FOR: CITY OF EAST PALO ALTO ENGINEERING DEPARTMENT SAN MATEO COUNTY, CALIFORNIA			
TITLE: WILLOW PLACEMENT STREET SWEEPING SIGN PROJECT			
SHEET 11 OF 11			
DATE: 3/4/2020 JOB NO.:			