

EPA LIBRARY COMMUNITY WORKSHOP

EPA LIBRARY
2474 PULGAS AVE
PALO ALTO, CA 94303

COMMUNITY WORKSHOP
12.12.2018

WHY

OPENING IMAGE

EPA LIBRARY
2474 PULGAS AVE
PALO ALTO, CA 94303

COMMUNITY WORKSHOP
12.12.2018

WHY

WORKSHOP FORMAT

CONTENTS

1. Establish workshop goals	1
2. Recap needs assessment	2
3. Project intention/goals	3
4. Proposed program	4
5. About the site	5
6. Proposed scenario	6

WORKSHOP GOALS

EPA LIBRARY

2474 PULGAS AVE
PALO ALTO, CA 94303

COMMUNITY WORKSHOP
12.12.2018

WHY

NEEDS ASSESSMENT RECAP

EPA LIBRARY

2474 PULGAS AVE
PALO ALTO, CA 94303

COMMUNITY WORKSHOP
12.12.2018

WHY

PROPOSED PROGRAM

Program	Low ASF (from needs assess't)	High ASF	Prop ASF	Prop GSF* 1.35	Approx Dim	SF @ 1st Flr	SF @ 2nd Flr	Notes
1) Welcome / Entry	2,100	2,700	1,010	1,364		1,364	0	6%
Entry / Lobby			350		12 x 30			
Concierge Stations			150		8 x 14			Explore in-the-round options
Cart Cubby			60		6 x 10			Accessible out-of-the-way alcove for operational incidentals
Self Check-out			150		8 x 12			3 stations @ 3LF ea
Holds			150		8 x 12			Confirm LF shelving
Seating			150		8 x 12			
Restrooms								Incl in bldg gross - accessible to community resource center
2) Community Resource Center	4,100	5,670	2,650	3,578		2,565	1,013	16%
								<ul style="list-style-type: none"> • Medium activity Rooms and Storage mandatory @ ground floor • 'Co-working' lounge can expand/contract based on scheme SF availability
Medium Activity Room			1,120		40 x 28			Combine w/ medium mtg room for large rm or able to open to lobby for expansion when needed
Small Activity Room (Quest)			540		18 x 30			Serves as Quest Classroom, combine with Medium Activity Room if no lobby expansion available, OK separate from Medium Activity Room if that room can expand on its own in other ways
Activity Room Storage			240		20 x 12			Preferred as an actual room, but OK to supplement with full ht cabinets
Partner/Resource Room A			150		10 x 15			Flexible space for community partners, and use as private meeting/study (ground or 2nd floor OK)
Partner/Resource Room B			150		10 x 15			"
Communal Working Lounge			450		30 x 15			Central to resource rooms, 'we-work' type environment
3) Culinary Literacy Center	-	-	1,175	1,586		1,586	0	7%
								<ul style="list-style-type: none"> • Replaces Café from Entry/Svc Area in Needs Assessment • Should be configured to pinch-hit as classroom when needed • Ground floor presence preferred • Possible to locate @ 2nd floor if 1st:2nd flr ratio makes adjacent roof space available for patio/garden
Teaching Kitchen			900		22 x 40			Combined domestic teaching kitchen and workstations/dining tables
Storage			200		10 x 20			
Office			75		9 x 8			Ideal - could serve as meeting room if not needed right away
Outdoor Seating			700		35 x 20			Shared access
Demonstration Garden			1,000		40 x 25			Visible/accessible to public, preferably visible to youth
4) Kids & Family Areas	5,040	6,480	3,100	4,185		4,185	0	19%
								• 4,000 gsf shown here represents a single roughly 100' x 40' open plan room. For reference, HMB is 120' x 40'
New Books			200					
Table Seating			400					
Books			1,000					
A/V & New Media			350					
Storytelling			1,000					
Storage			150					
Outdoor Area			1,000		40 x 25			may need to combine w/outdoor eating
Family Restroom								Incl in bldg gross

Program	Low ASF	High ASF	Prop ASF	Prop GSF* 1.35	Approx Dim	SF @ 1st Flr	SF @ 2nd Flr	Notes
5) Cabinet of Curiosity	1,680	2,160	1,900	2,565		0	2,565	12%
								<ul style="list-style-type: none"> • High-visibility preferred • Could be adjacent to Culinary Literacy • Ground floor presence preferred
Teen Room						900	45 x 20	
Maker Room						700	35 x 20	Maker room could be adjacent Teaching Kitchen
VR Experience Alcove						300		Preferred location - could be located elsewhere if needed
Alcove office						90		Access and visibility to VR, Maker, and Teen Spaces
Storage						100		Included in Teen Room total

Program	Low ASF	High ASF	Prop ASF	Prop GSF* 1.35	Approx Dim	SF @ 1st Flr	SF @ 2nd Flr	Notes
6) Collections & Study	5,040	6,480	4,920	6,642		0	6,642	31%
								• Reference: HMB 2nd flr main space is one open 6,000 sf room (incl stair and elev) plus mtg rms & quiet rm
Main Space						4,000		
New Books / Media / Periodicals						-		
Adult Collections						-		
EPA History						-		
Reader Seating						-		Dispersed
Public Computers						-		Assuming mostly laptop check-out - confirm desktop needs
Printing						-		Do we need this as a dedicated area?
Study Room A						90		Consider there will be 5 study rooms total when taken with Community Resource rooms
Study Room B						90		"
Study Room C						90		"
Quiet Room						650		Model for this is more the 'Collaboration Garage' - think garage work room, Stanford D-school jam room, etc. Possible to outfit Medium Activity Room for this purpose.
Restrooms								Incl in bldg gross - assumes Collections & Disc on 2nd flr

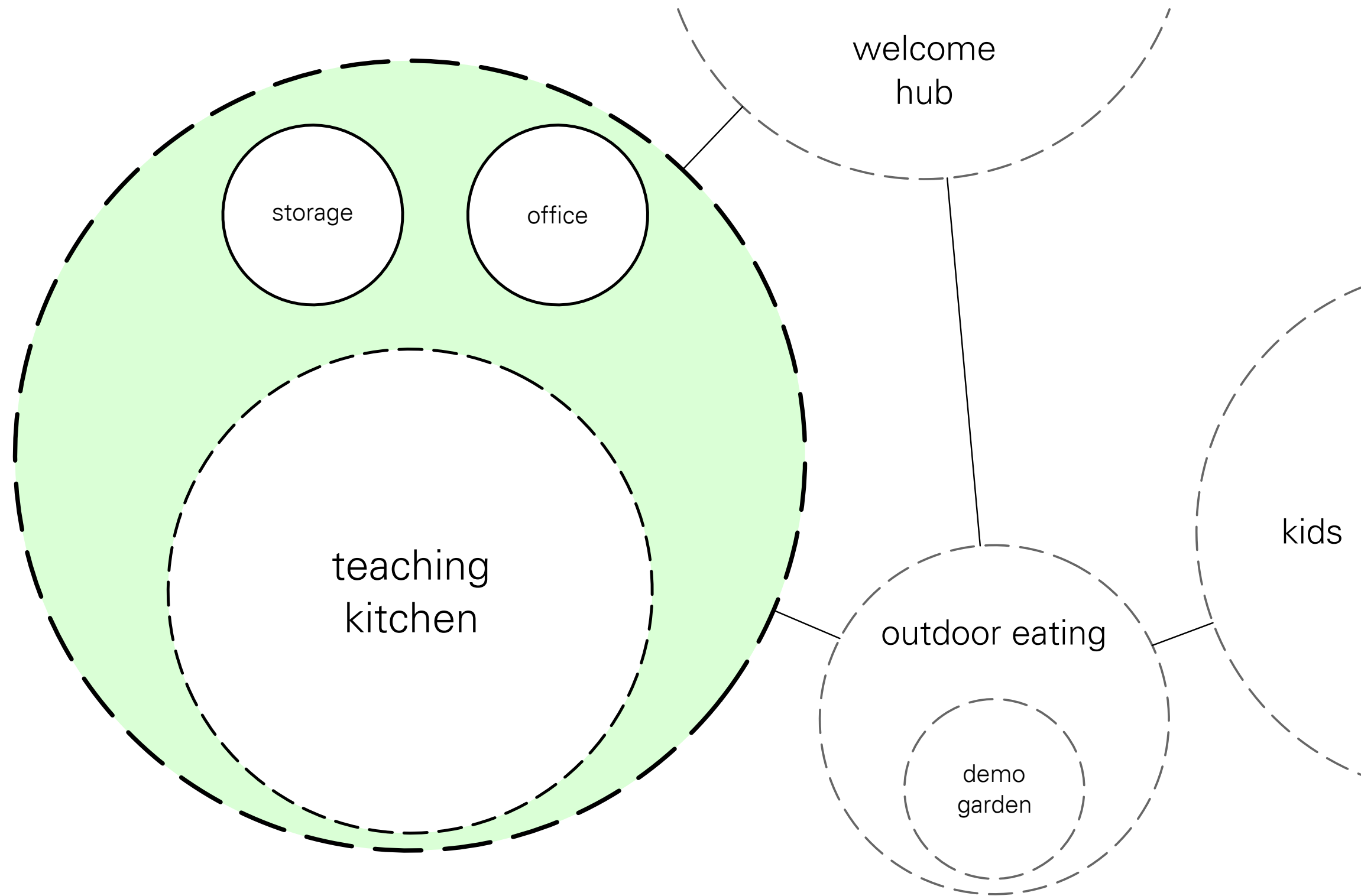
Program	Low ASF	High ASF	Prop ASF	Prop GSF* 1.35	Approx Dim	SF @ 1st Flr	SF @ 2nd Flr	Notes
7) Staff Resource Area	2,940	3,780	1,265	1,834		1,834	0	8%
								<ul style="list-style-type: none"> • Applying a higher grossing factor (1.45) due to more compartmentalized use. • Any possibility of moving office component to 2nd floor?
Collection Processing Room						375	25 x 15	Adj book drop - public visibility a plus - adj front or rear ent. OK to locate apart from rest of Staff Area
Staff Open Office						450	30 x 15	
Enclosed Office						110	9 x 12	
Staff Break Area						150	12 x 12	
Storage						90	9 x 10	
Data / Telecom						90	9 x 10	Can be located elsewhere
Staff Restroom w/Shower								Incl in bldg gross

Program	Low ASF	High ASF	Prop ASF	Prop GSF* 1.35	Approx Dim	SF @ 1st Flr	SF @ 2nd Flr	Notes
8) Site & Outdoor Amenities	2,900	TBD						
Outdoor Reading								
Outdoor Eating								Most likely part of Outdoor Reading
Youth Play Area								
Demonstration Garden								
Bike Racks								
Parking Spaces	42	61	40					Assumes 1:400 per BRC re-zoning, using assignable area as base SF for calculations. Our site capacity with building is roughly <40 spaces.
Parking Area	15,960	23,275	15,219					Assumes 380 SF per parking space, including drive aisles and entry
Loading								Discuss needs

Building Totals	Low ASF	High ASF	Prop ASF	Prop GSF* 1.35	Approx Dim	SF @ 1st Flr	SF @ 2nd Flr	Notes
Total ASF	16,800	24,500	16,020					
Grossing factor	1.4	1.4	1.4	1.35				
Total GSF	23,520	34,300	22,428	21,754		11,534	10,220	

Site	Low ASF	High ASF	Prop ASF	Prop GSF* 1.35	Approx Dim	SF @ 1st Flr	SF @ 2nd Flr	Notes
Base Site Area	43,000							Approximate - to be confirmed
Buildable Site Area Gross	33,000							Site area less setbacks
Buildable Site Area Net			17,781					Site area less setbacks and parking allowance

PROPOSED PROGRAM



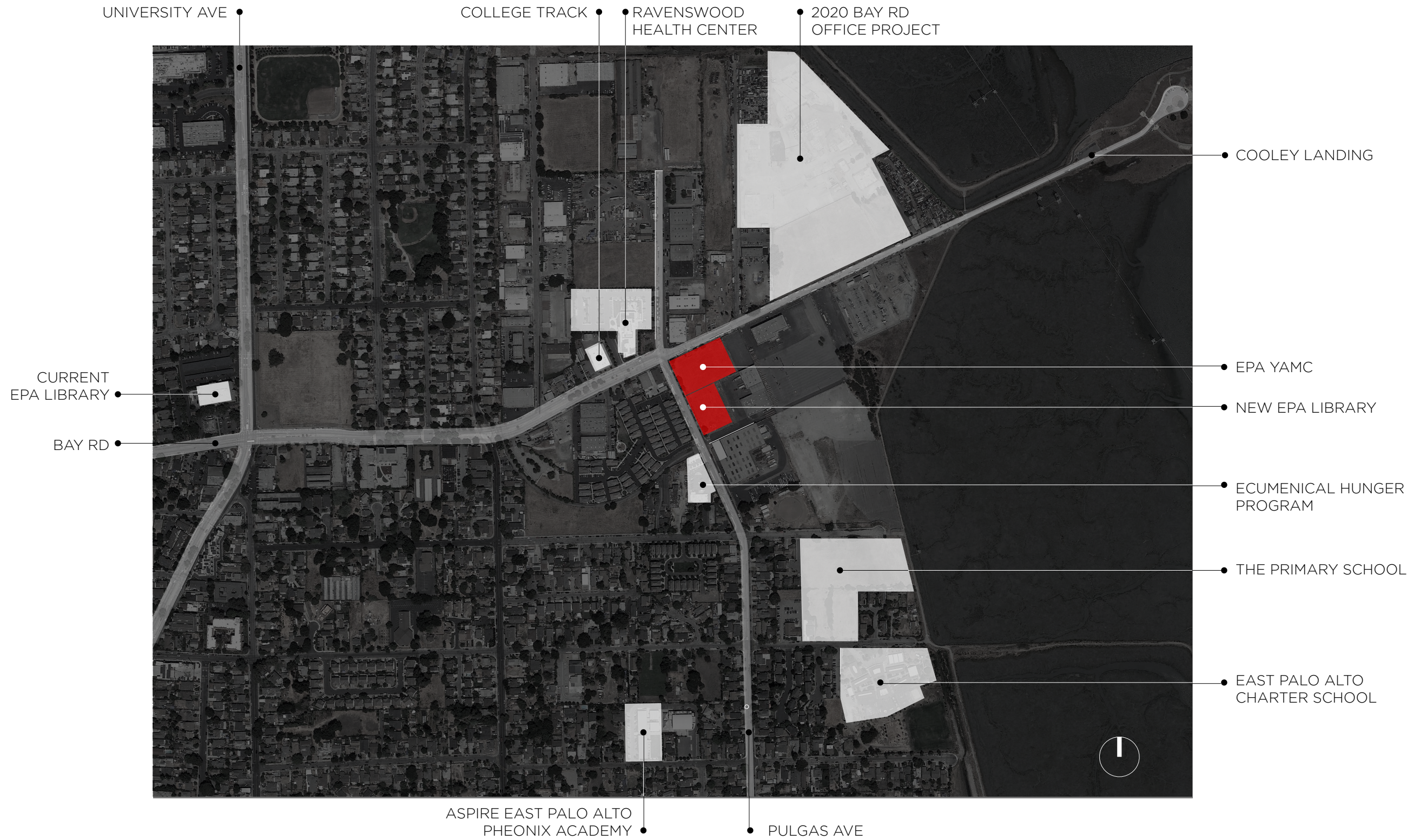
EPA LIBRARY

2474 PULGAS AVE
PALO ALTO, CA 94303

COMMUNITY WORKSHOP
12.12.2018

WHY

UNDERSTANDING THE SITE



EPA LIBRARY
2474 PULGAS AVE
PALO ALTO, CA 94303

COMMUNITY WORKSHOP
12.12.2018



EPA YOUTH ART AND MUSIC CENTER



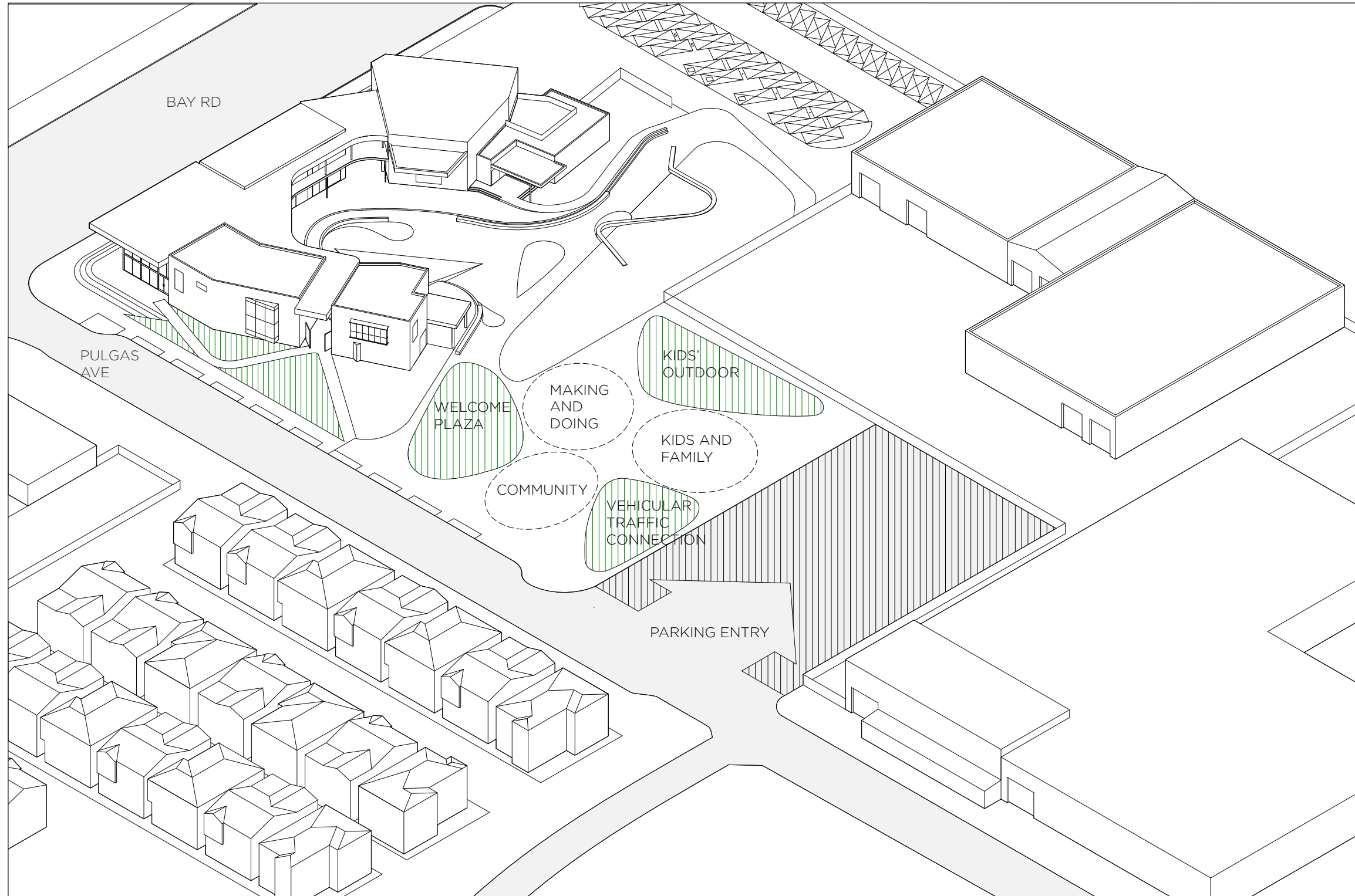
EPA LIBRARY

2474 PULGAS AVE
PALO ALTO, CA 94303

COMMUNITY WORKSHOP
12.12.2018



DIFFERENT APPROACHES OPTION 1



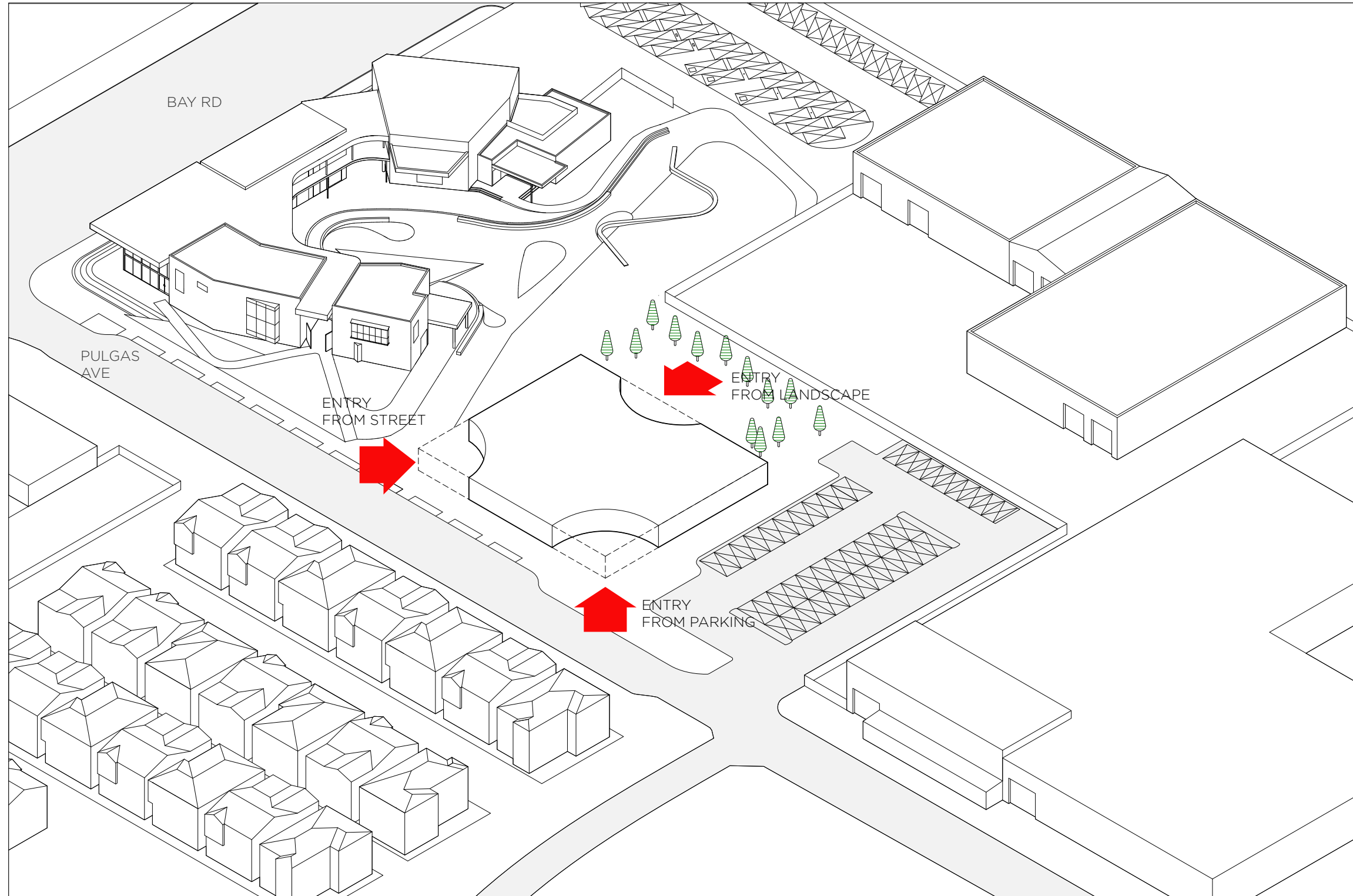
EPA LIBRARY

2474 PULGAS AVE
PALO ALTO, CA 94303

COMMUNITY WORKSHOP
12.12.2018



OPTION 1



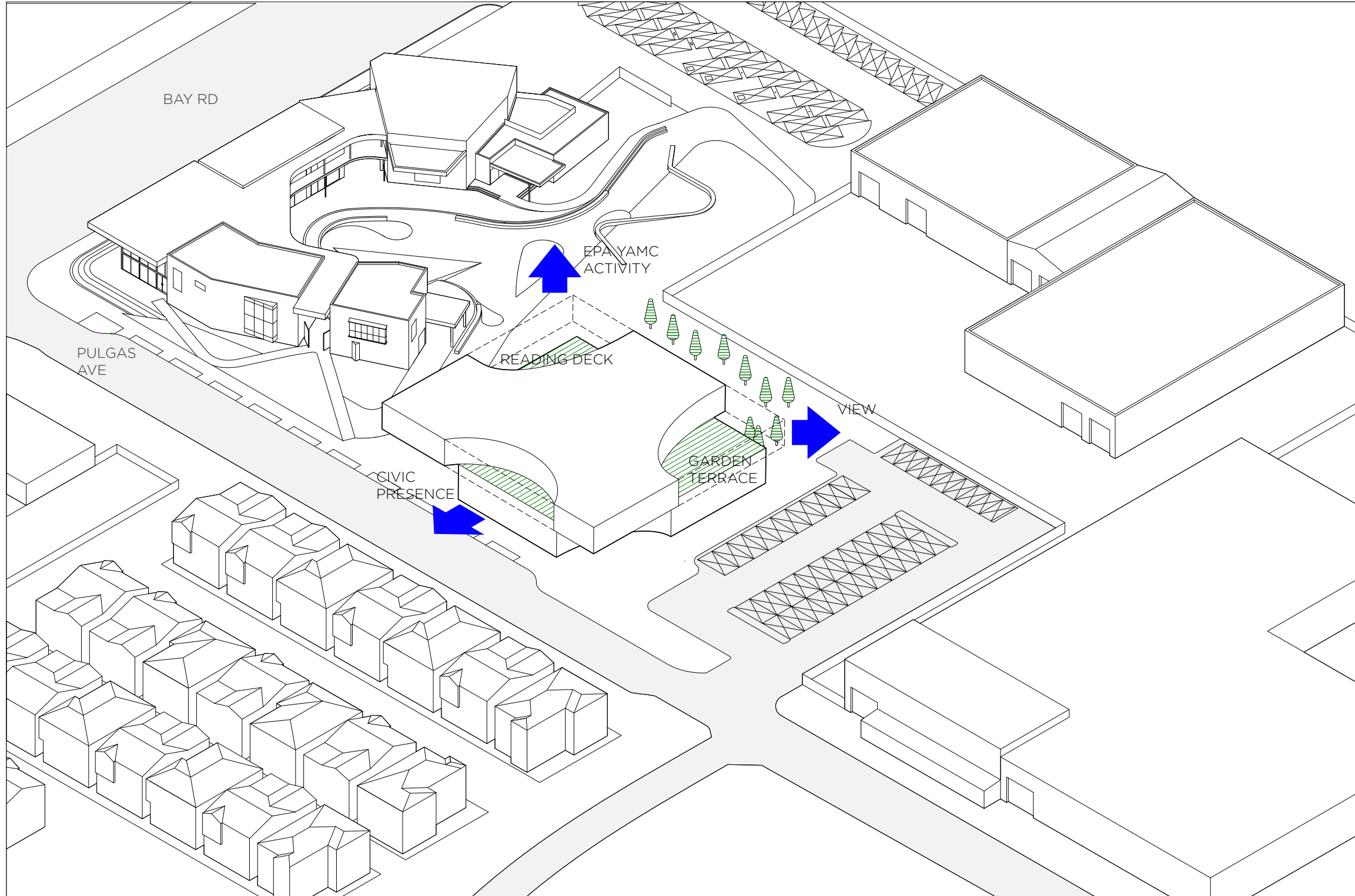
EPA LIBRARY

2474 PULGAS AVE
PALO ALTO, CA 94303

COMMUNITY WORKSHOP
12.12.2018



OPTION 1



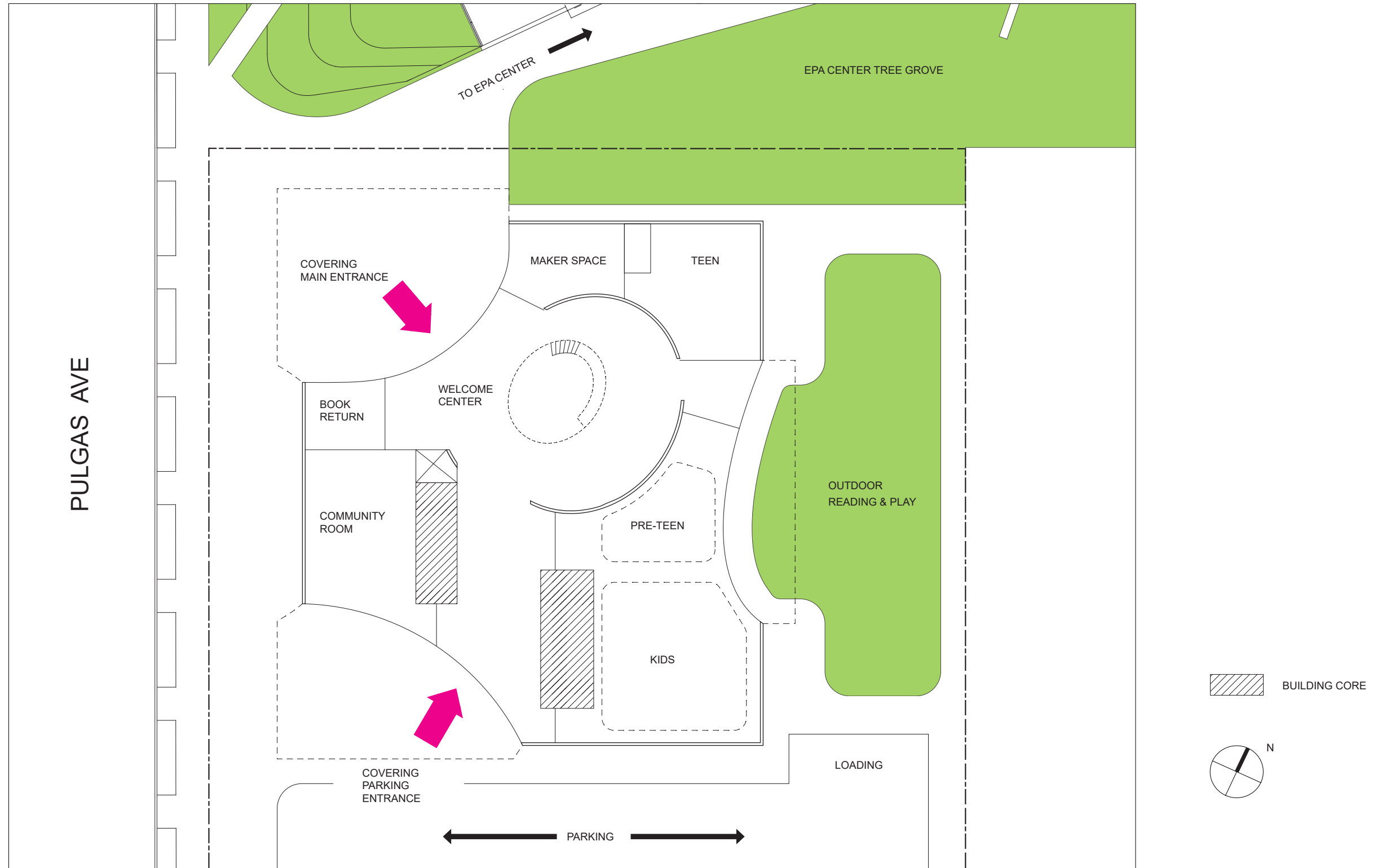
EPA LIBRARY

2474 PULGAS AVE
PALO ALTO, CA 94303

COMMUNITY WORKSHOP
12.12.2018



OPTION 1

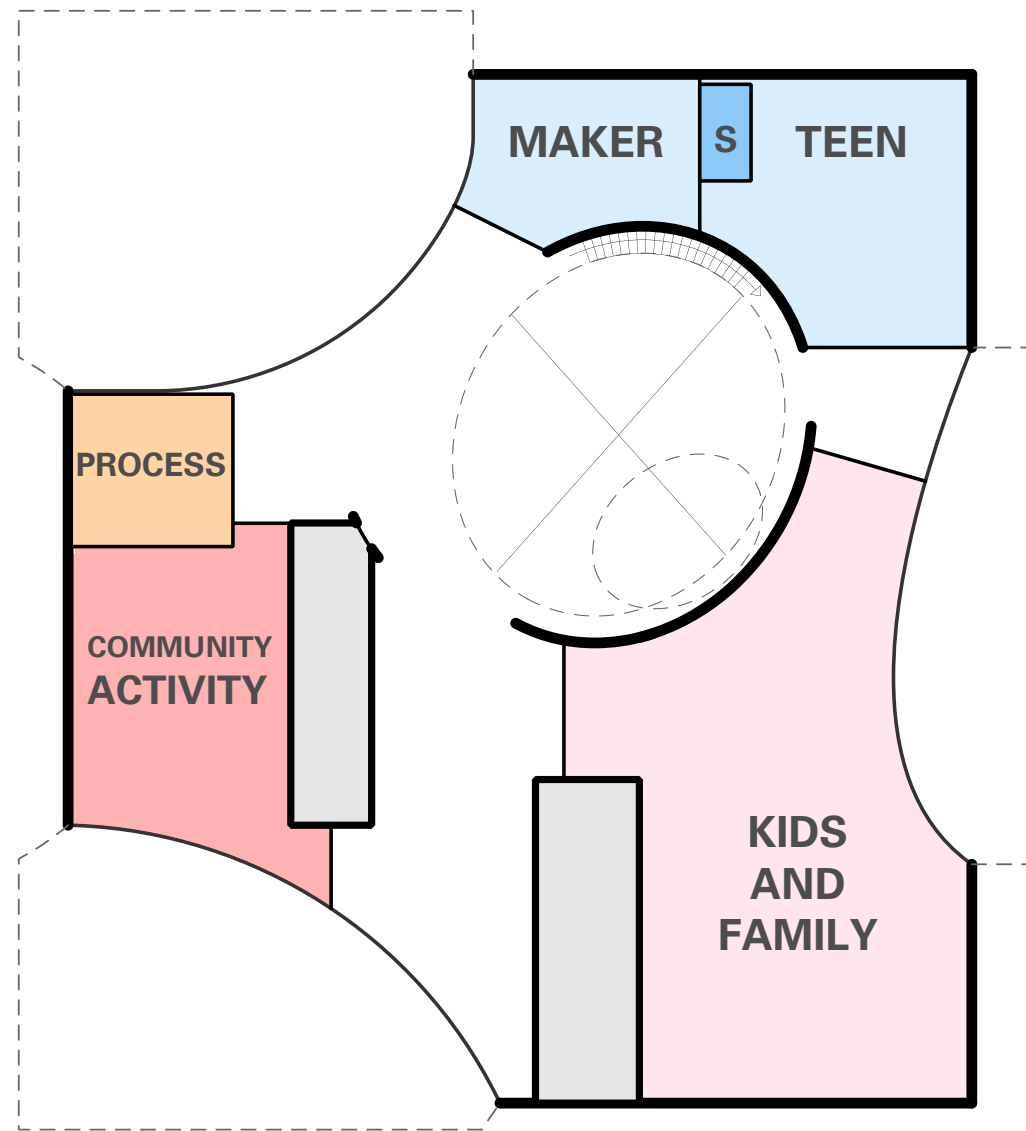


EPA LIBRARY
2474 PULGAS AVE
PALO ALTO, CA 94303

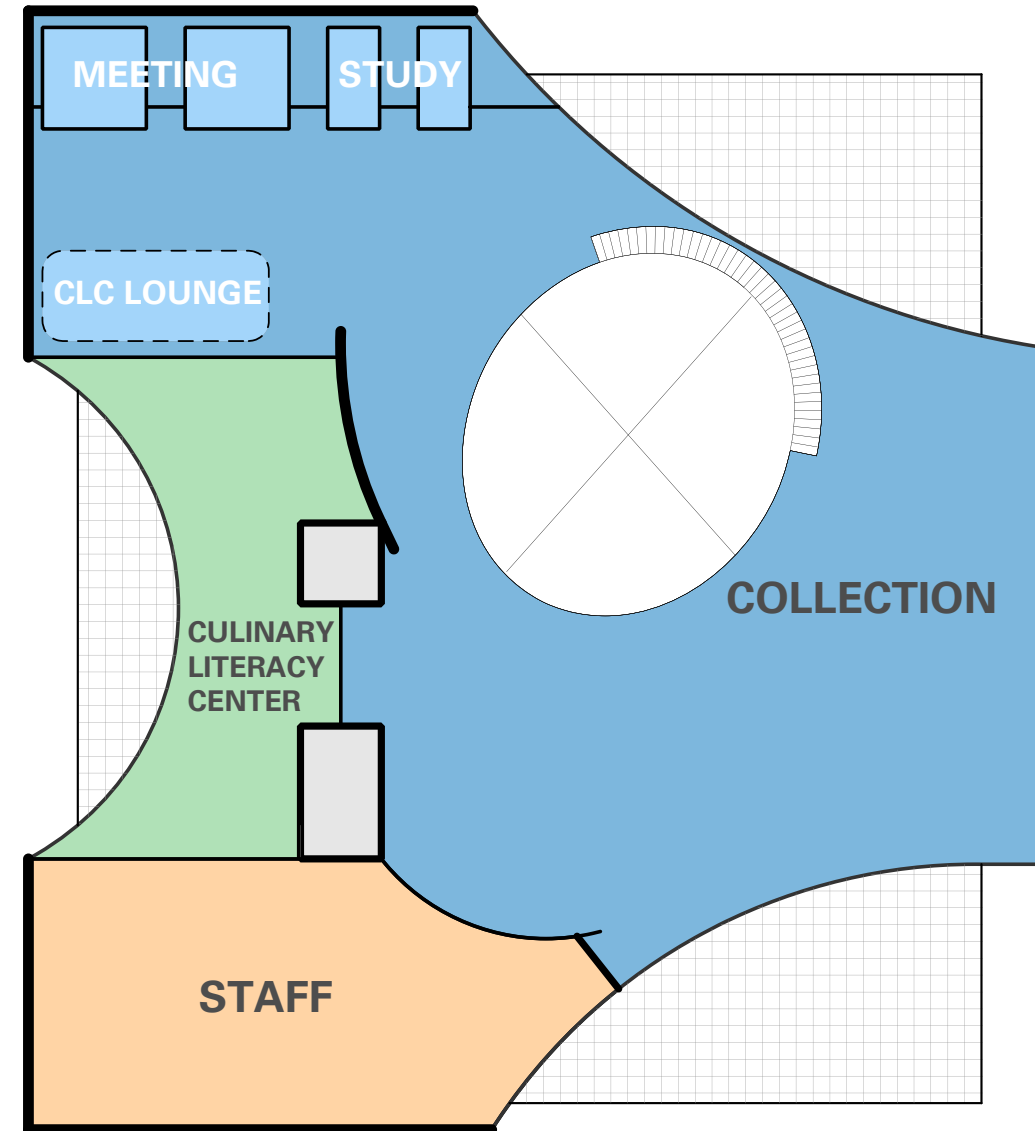
COMMUNITY WORKSHOP
12.12.2018



OPTION 1



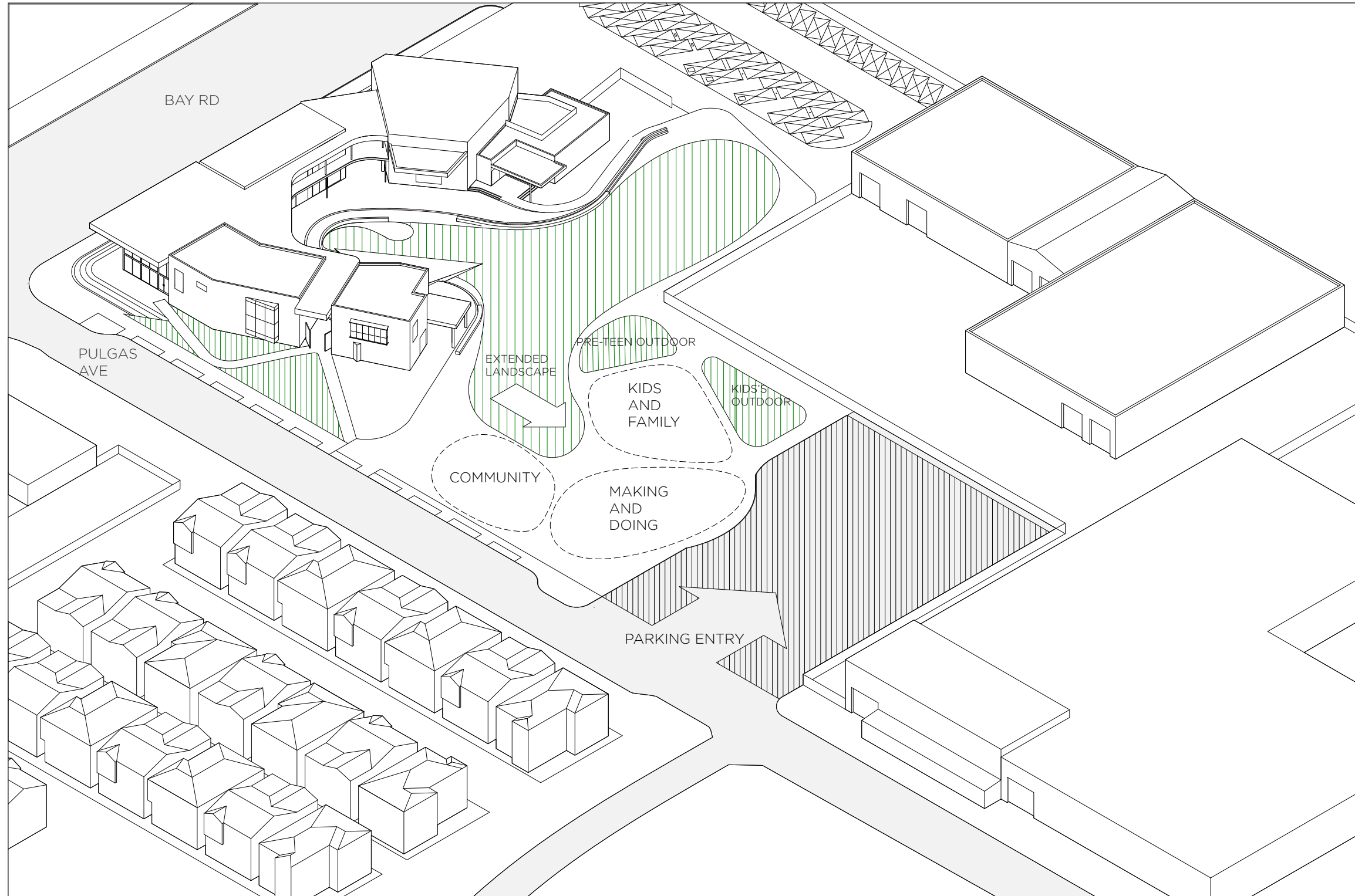
GROUND FLOOR



SECOND FLOOR

- C.O.C
- STAFF
- C.L.C
- COMMUNITY
- KIDS & FAMILY
- COLLECTION

OPTION 2



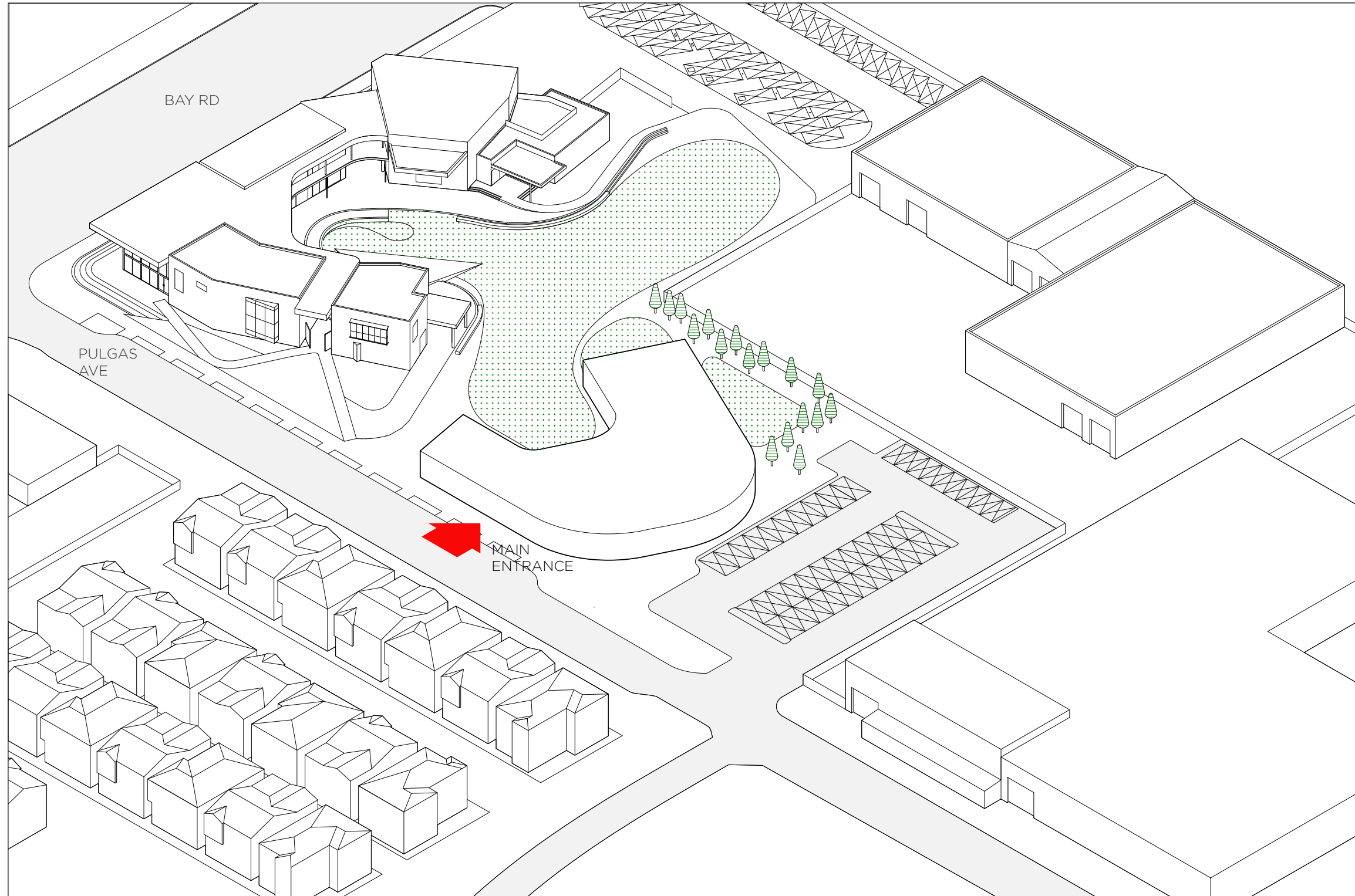
EPA LIBRARY

2474 PULGAS AVE
PALO ALTO, CA 94303

COMMUNITY WORKSHOP
12.12.2018



OPTION 2



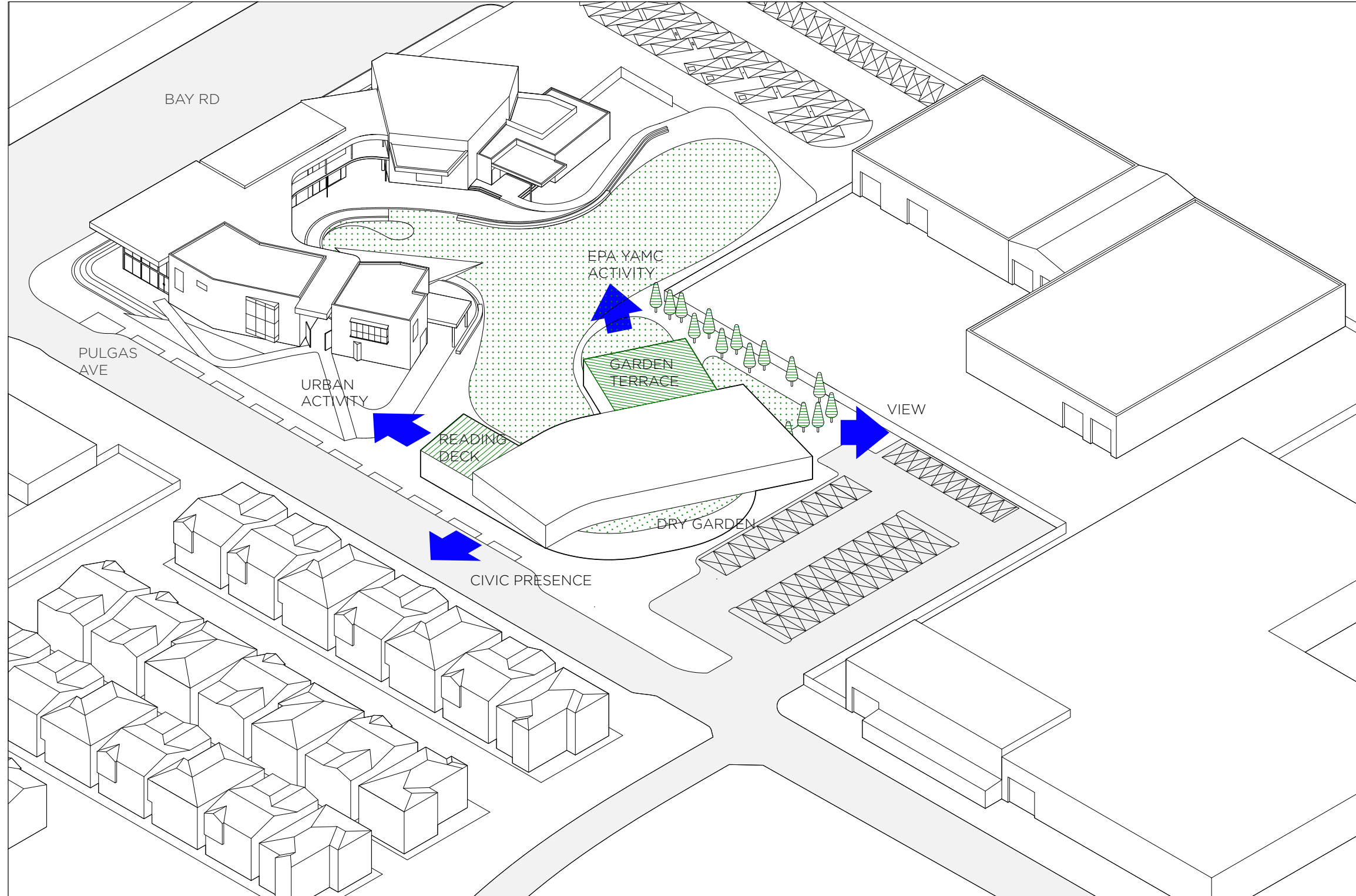
EPA LIBRARY

2474 PULGAS AVE
PALO ALTO, CA 94303

COMMUNITY WORKSHOP
12.12.2018



OPTION 2



EPA LIBRARY

2474 PULGAS AVE
PALO ALTO, CA 94303

COMMUNITY WORKSHOP
12.12.2018



OPTION 2

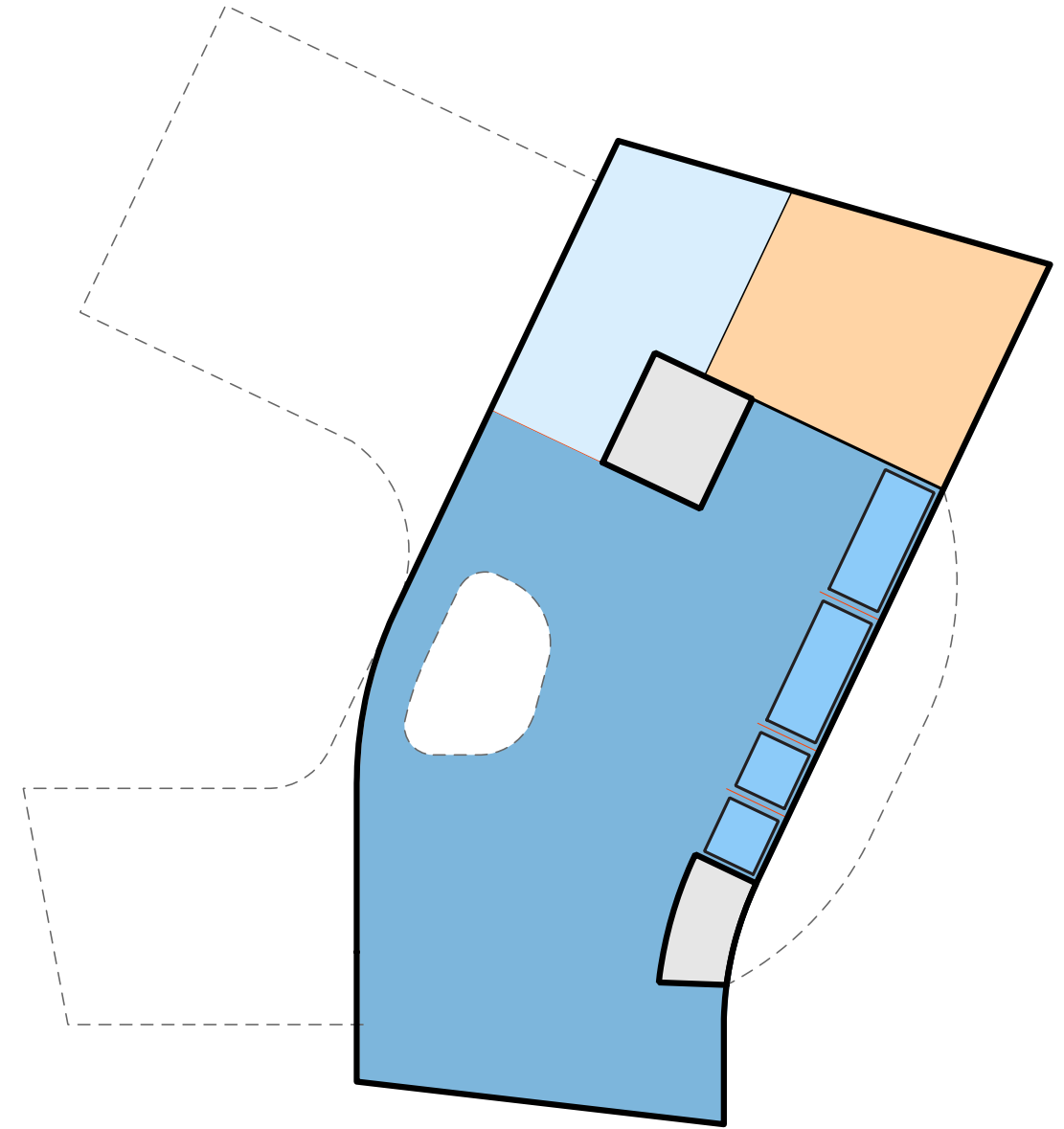
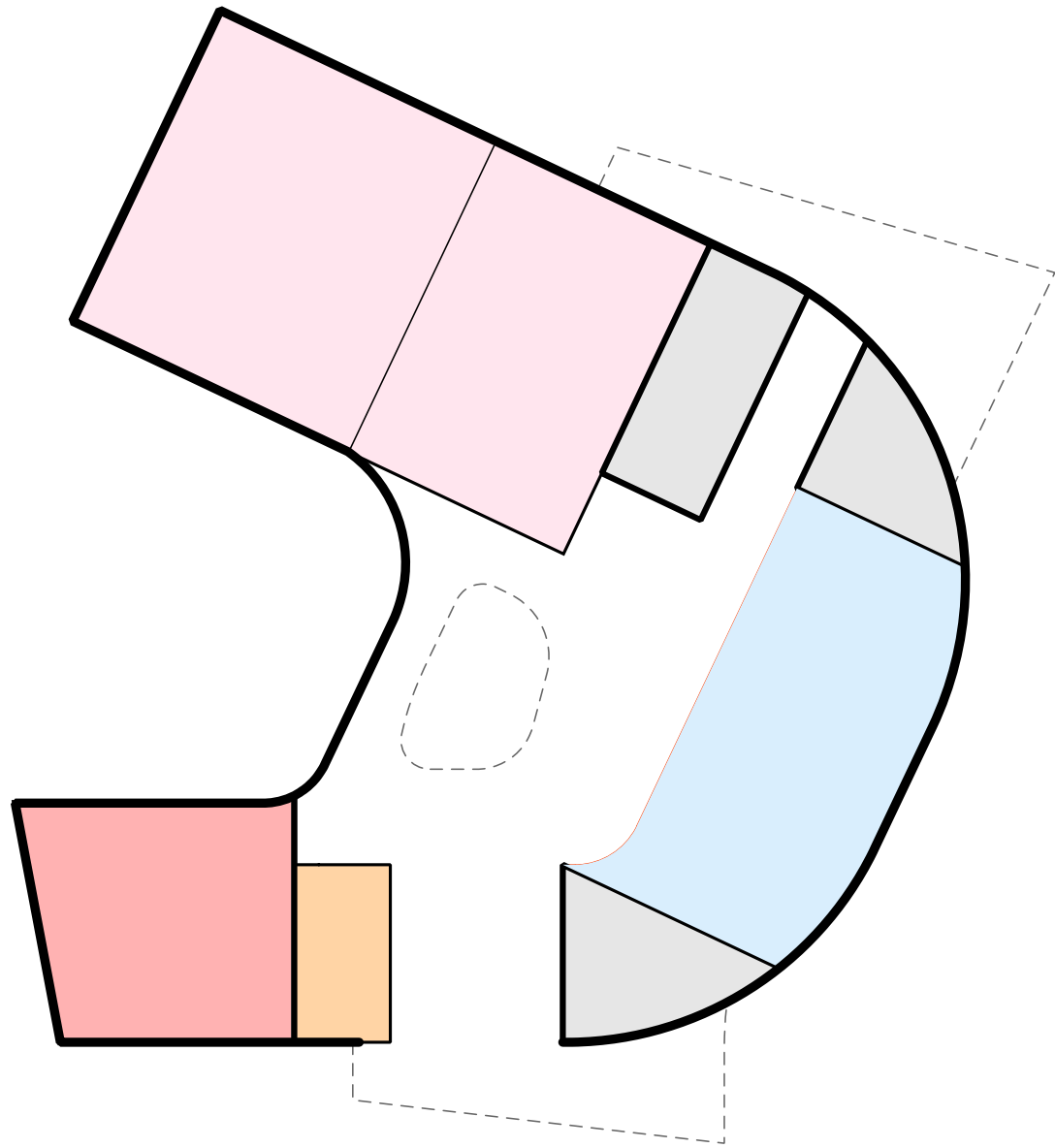


EPA LIBRARY
2474 PULGAS AVE
PALO ALTO, CA 94303

COMMUNITY WORKSHOP
12.12.2018



OPTION 2



EPA LIBRARY

2474 PULGAS AVE
PALO ALTO, CA 94303

COMMUNITY WORKSHOP
12.12.2018



EPA LIBRARY

2474 PULGAS AVE
PALO ALTO, CA 94303

COMMUNITY WORKSHOP
12.12.2018

WHY

EPA LIBRARY

2474 PULGAS AVE
PALO ALTO, CA 94303

COMMUNITY WORKSHOP
12.12.2018

WHY

EPA LIBRARY

2474 PULGAS AVE
PALO ALTO, CA 94303

COMMUNITY WORKSHOP
12.12.2018

WHY

EPA LIBRARY

2474 PULGAS AVE
PALO ALTO, CA 94303

COMMUNITY WORKSHOP
12.12.2018

WHY

EPA LIBRARY

2474 PULGAS AVE
PALO ALTO, CA 94303

COMMUNITY WORKSHOP
12.12.2018

WHY

EPA LIBRARY

2474 PULGAS AVE
PALO ALTO, CA 94303

COMMUNITY WORKSHOP
12.12.2018

WHY

EPA LIBRARY

2474 PULGAS AVE
PALO ALTO, CA 94303

COMMUNITY WORKSHOP
12.12.2018

WHY

EPA LIBRARY

2474 PULGAS AVE
PALO ALTO, CA 94303

COMMUNITY WORKSHOP
12.12.2018



EPA LIBRARY

2474 PULGAS AVE
PALO ALTO, CA 94303

COMMUNITY WORKSHOP
12.12.2018

WHY

EPA LIBRARY

2474 PULGAS AVE
PALO ALTO, CA 94303

COMMUNITY WORKSHOP
12.12.2018



EPA LIBRARY

2474 PULGAS AVE
PALO ALTO, CA 94303

COMMUNITY WORKSHOP
12.12.2018

WHY

EPA LIBRARY

2474 PULGAS AVE
PALO ALTO, CA 94303

COMMUNITY WORKSHOP
12.12.2018



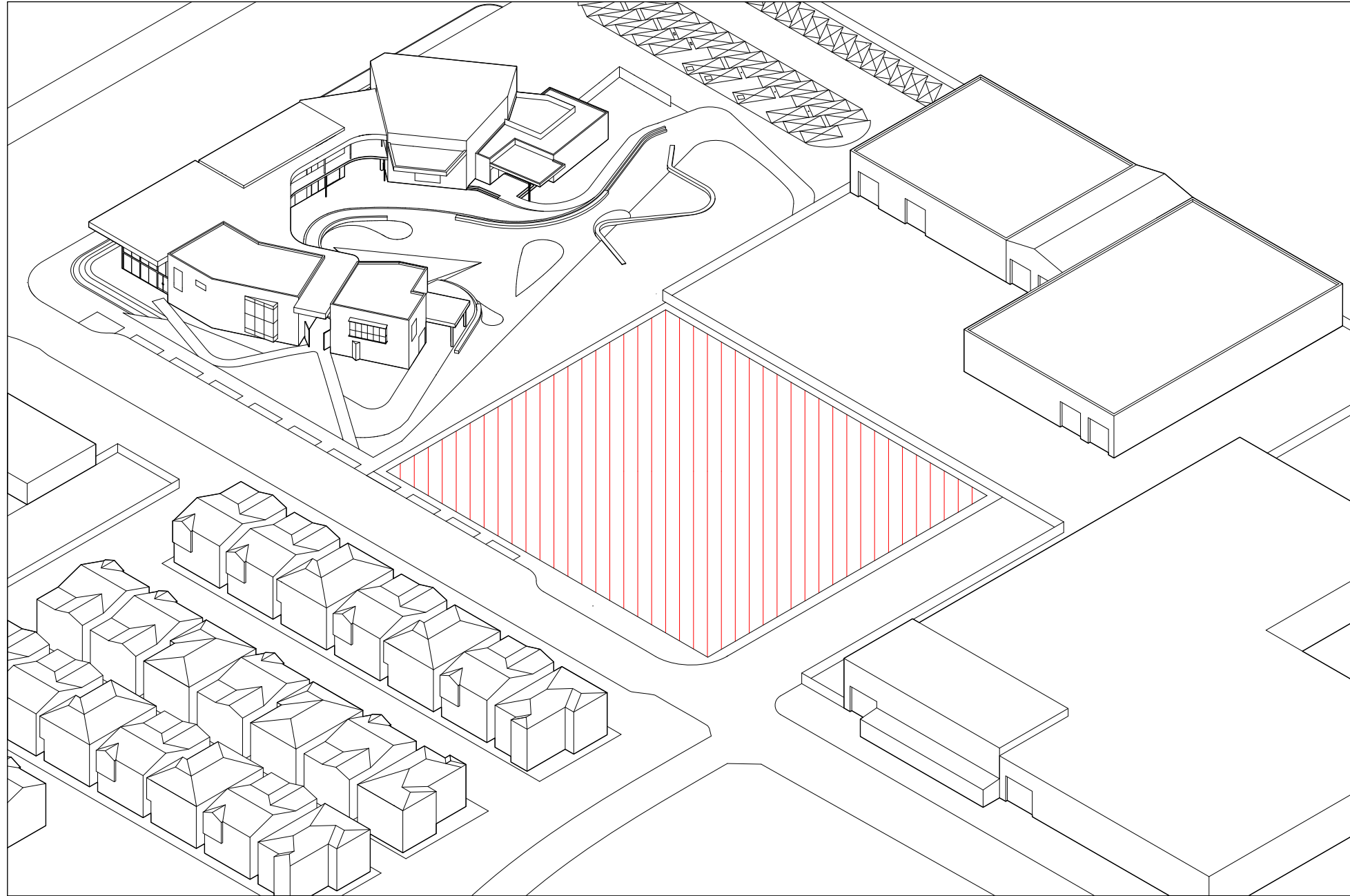
EPA LIBRARY

2474 PULGAS AVE
PALO ALTO, CA 94303

COMMUNITY WORKSHOP
12.12.2018

WHY

CONTENTS



EPA LIBRARY

2474 PULGAS AVE
PALO ALTO, CA 94303

COMMUNITY WORKSHOP
12.12.2018



EPA LIBRARY

2474 PULGAS AVE
PALO ALTO, CA 94303

COMMUNITY WORKSHOP
12.12.2018

WHY

EPA LIBRARY

2474 PULGAS AVE
PALO ALTO, CA 94303

COMMUNITY WORKSHOP
12.12.2018

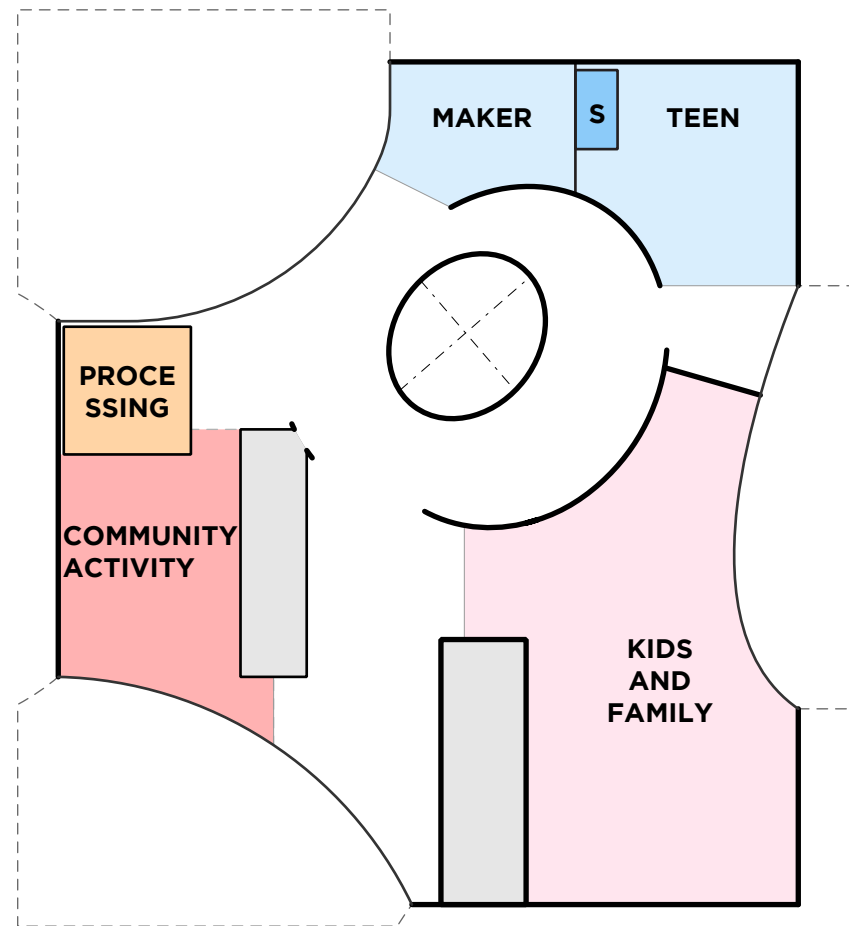
WHY

EPA LIBRARY

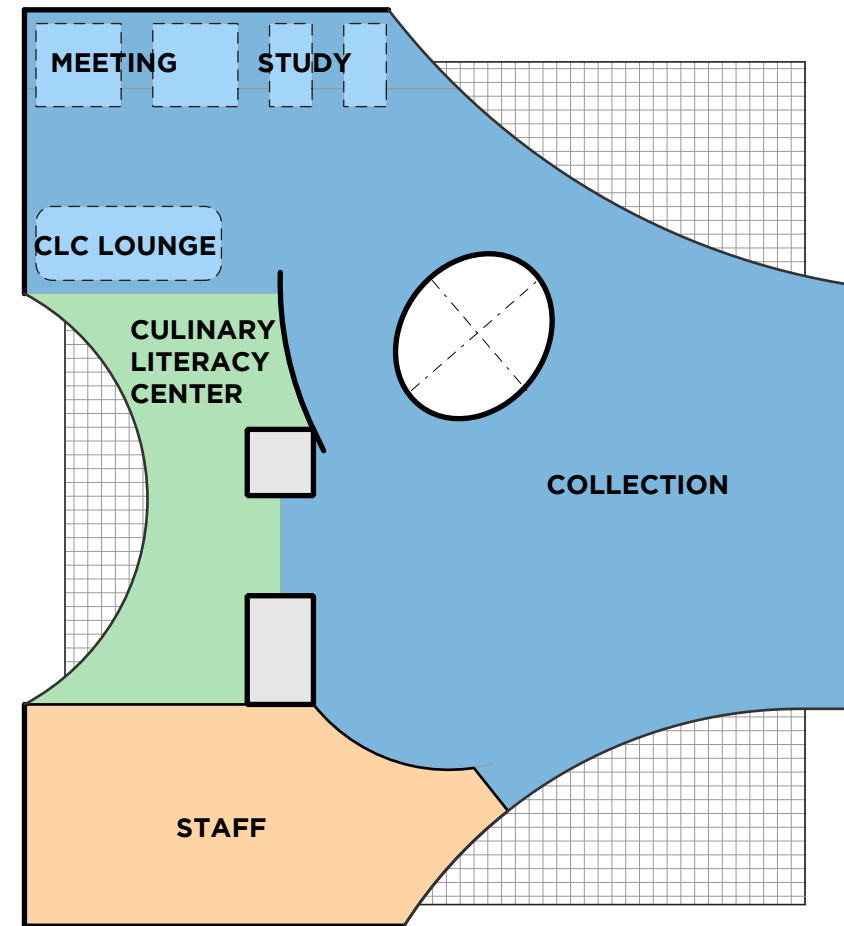
2474 PULGAS AVE
PALO ALTO, CA 94303

COMMUNITY WORKSHOP
12.12.2018

WHY



GROUND FLOOR



SECOND FLOOR

- | | |
|---|---|
| C.O.C | COMMUNITY |
| STAFF | KIDS & FAMILY |
| C.L.C | COLLECTION |

EPA LIBRARY

2474 PULGAS AVE
PALO ALTO, CA 94303

COMMUNITY WORKSHOP
12.12.2018

WHY