

EAST PALO ALTO LIBRARY

CONCEPTUAL COST PACKAGE

05.20.2019

SITE PLAN

1:60

CONSTRUCTION TYPE

A-3 VA TYPE

SUSTAINABLE DESIGN GOAL

LEED GOLD

GROSS SITE AREA: 43,527SF

NET SITE AREA: 42,000SF

BUILDING FOOTPRINT: 11,000 SF

HARDSCAPE: 4,000 SF

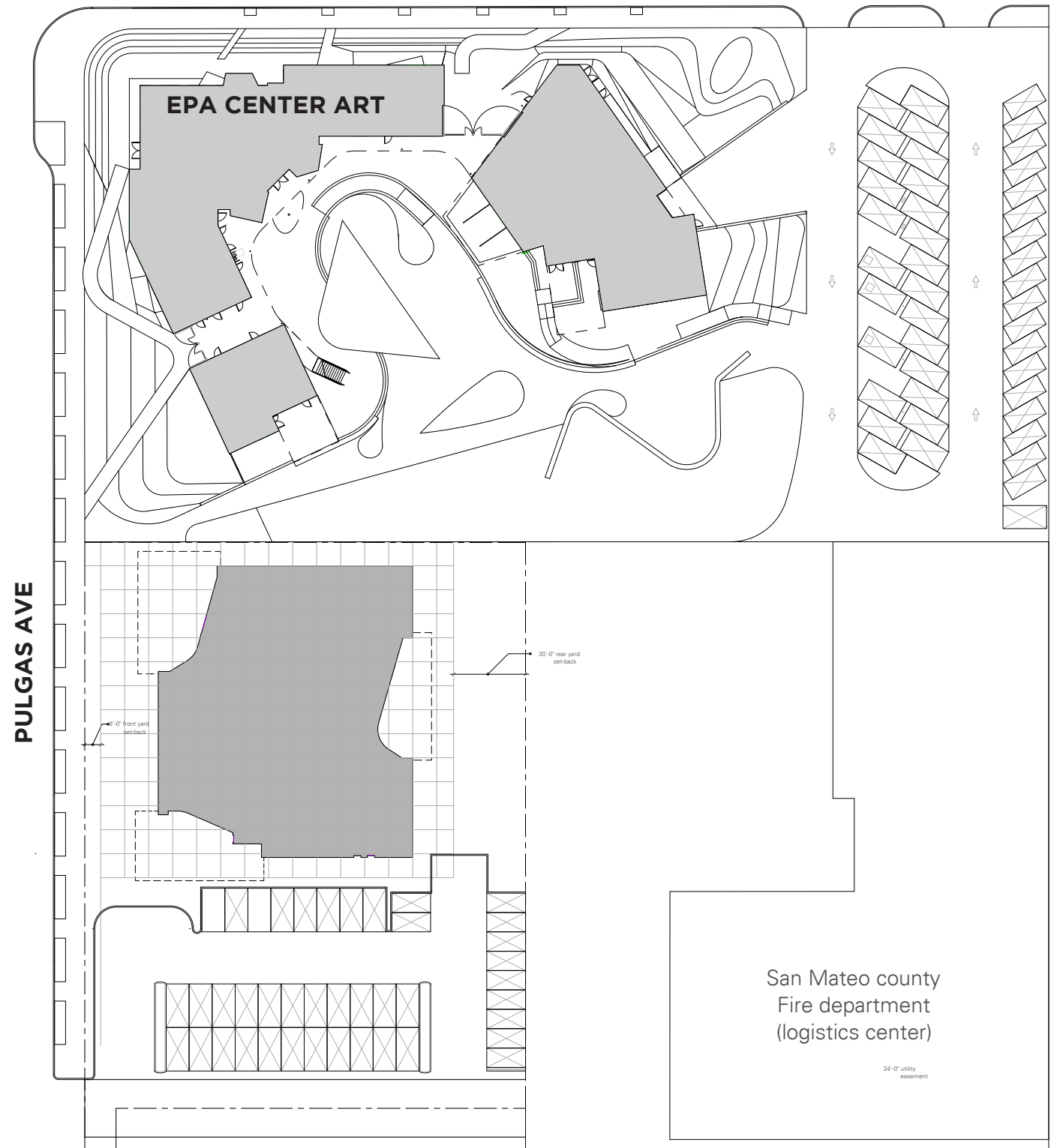
SOFTSCAPE: 10,000 SF

PARKING: 17,000 SF

EXTERIOR COVERED AREA: 3,600 SF

DECK: 3,955 SF

EAST PALO ALTO LIBRARY

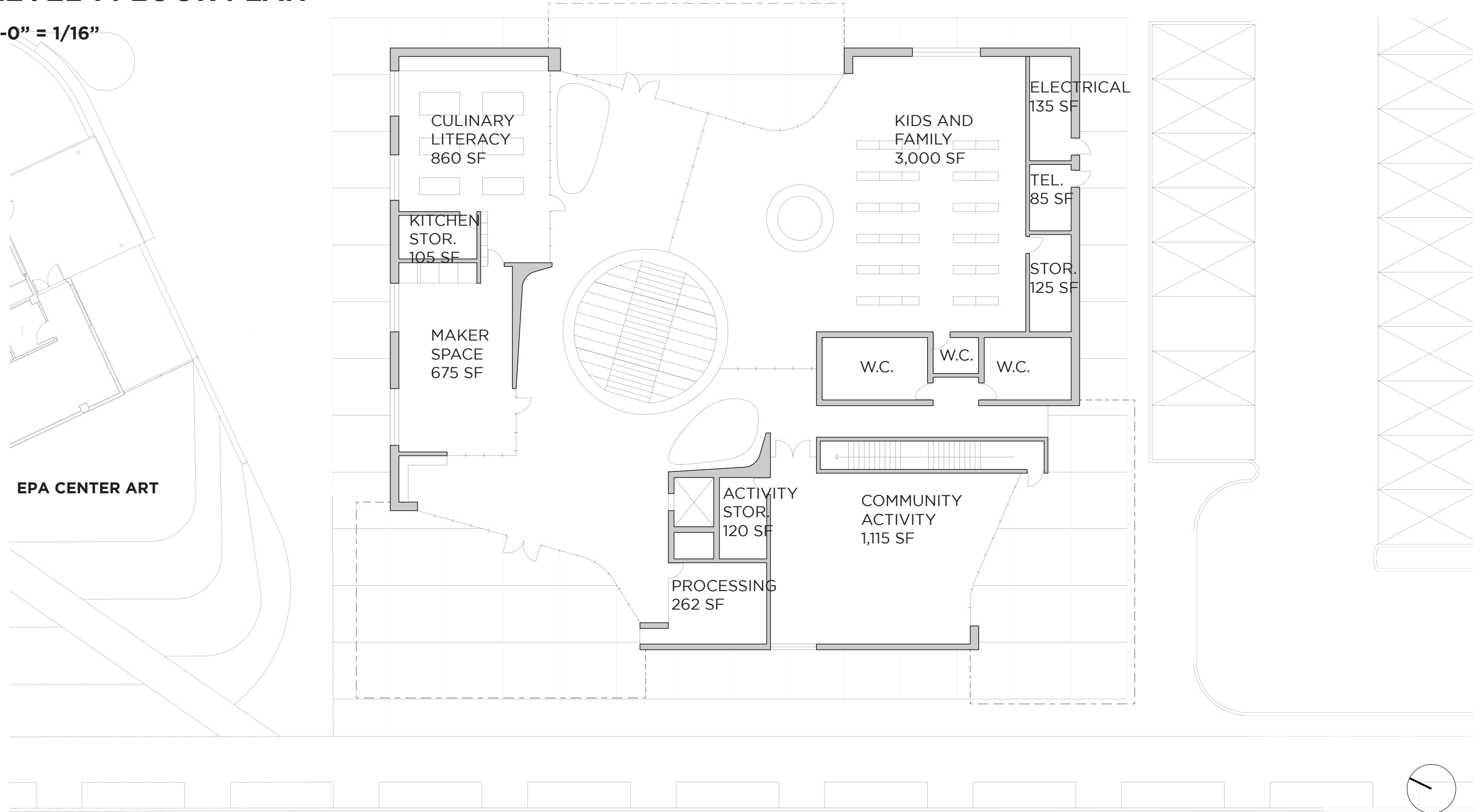


CONCEPTUAL COST PACKAGE
2019.05. 20

WHY

LEVEL 1 FLOOR PLAN

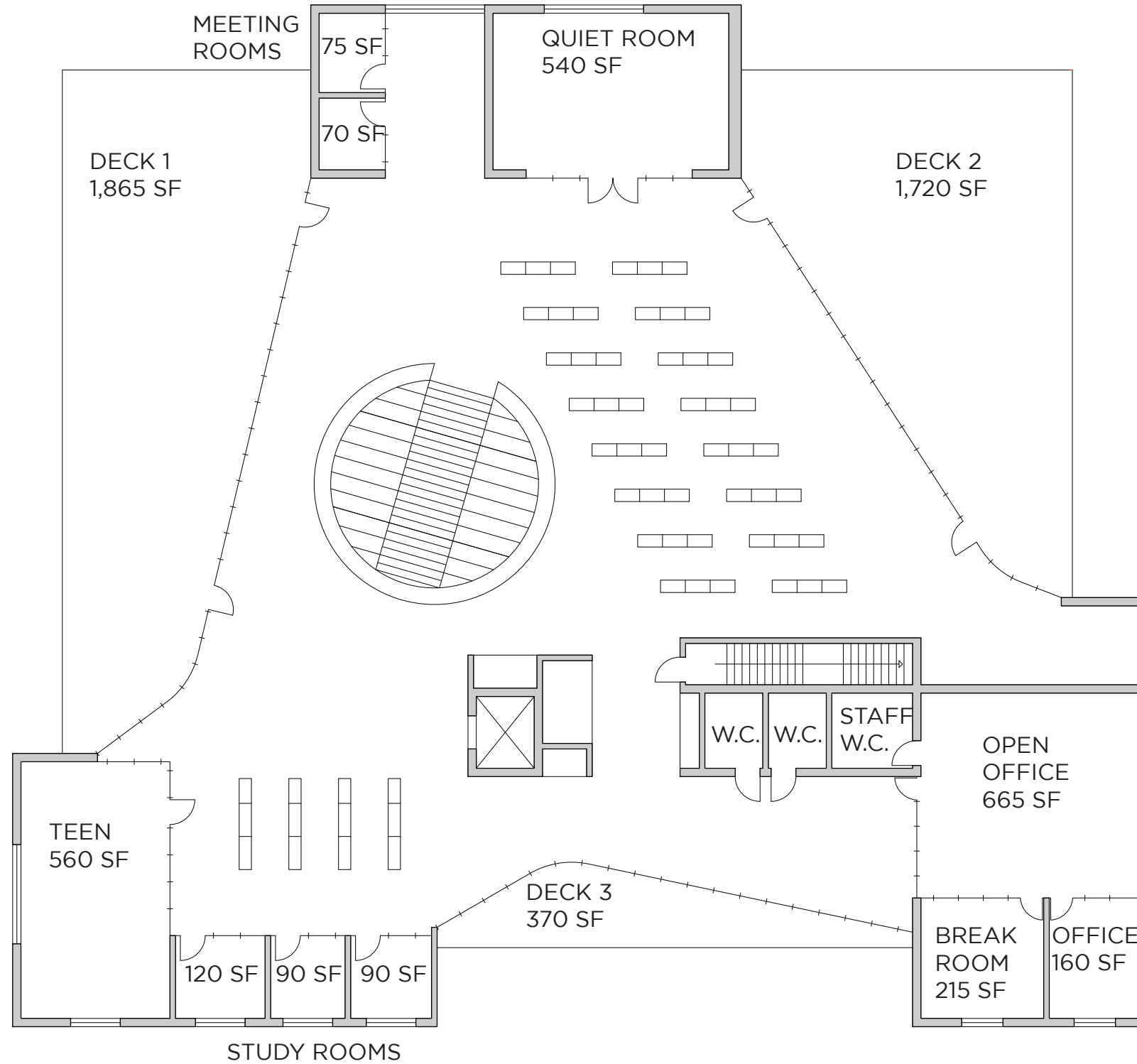
1'-0" = 1/16"



PULGAS AVE

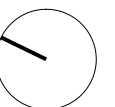
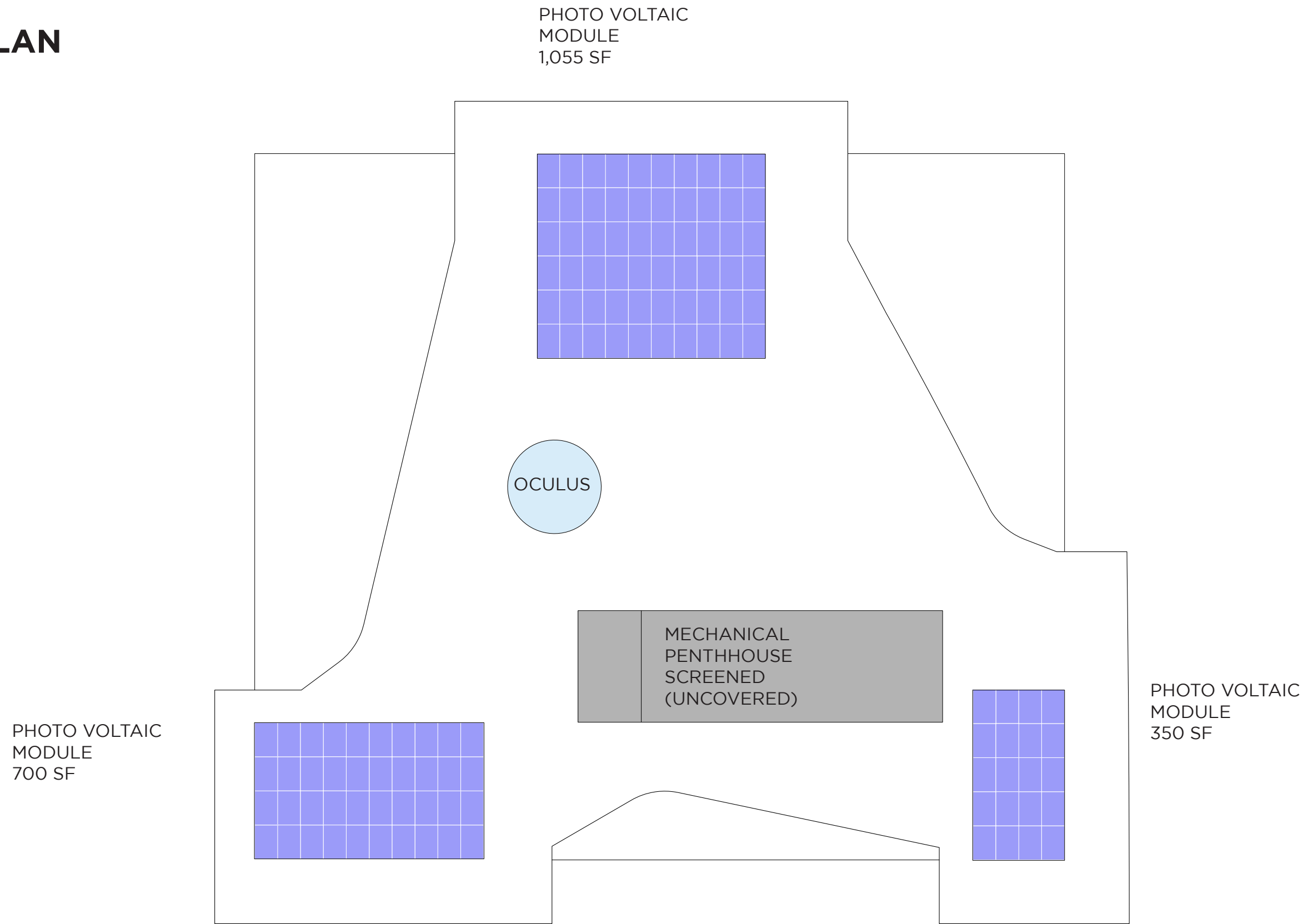
LEVEL 2 FLOOR PLAN

1'-0" = 1/16"



ROOF PLAN

1'-0" = 1/16"



LEVEL 1 AXONOMETRIC

WELCOME LOBBY

BOOK DROP	262 PSF
CONCIERGE	150 PSF
SEATING / WAITING	150 PSF
CHECK OUT	150 PSF

CABINET OF CURIOSITY

MAKER SPACE	625 PSF
MAKER SPACE STORAGE	50 PSF

COMMUNITY RESOURCE CENTER

COMMUNITY ACTIVITY ROOM	1,115 PSF
COMMUNITY ACTIVITY STORAGE	120 PSF

CULINARY LITERACY CENTER

TEACHING KITCHEN	860 PSF
KITCHEN STORAGE	105 PSF

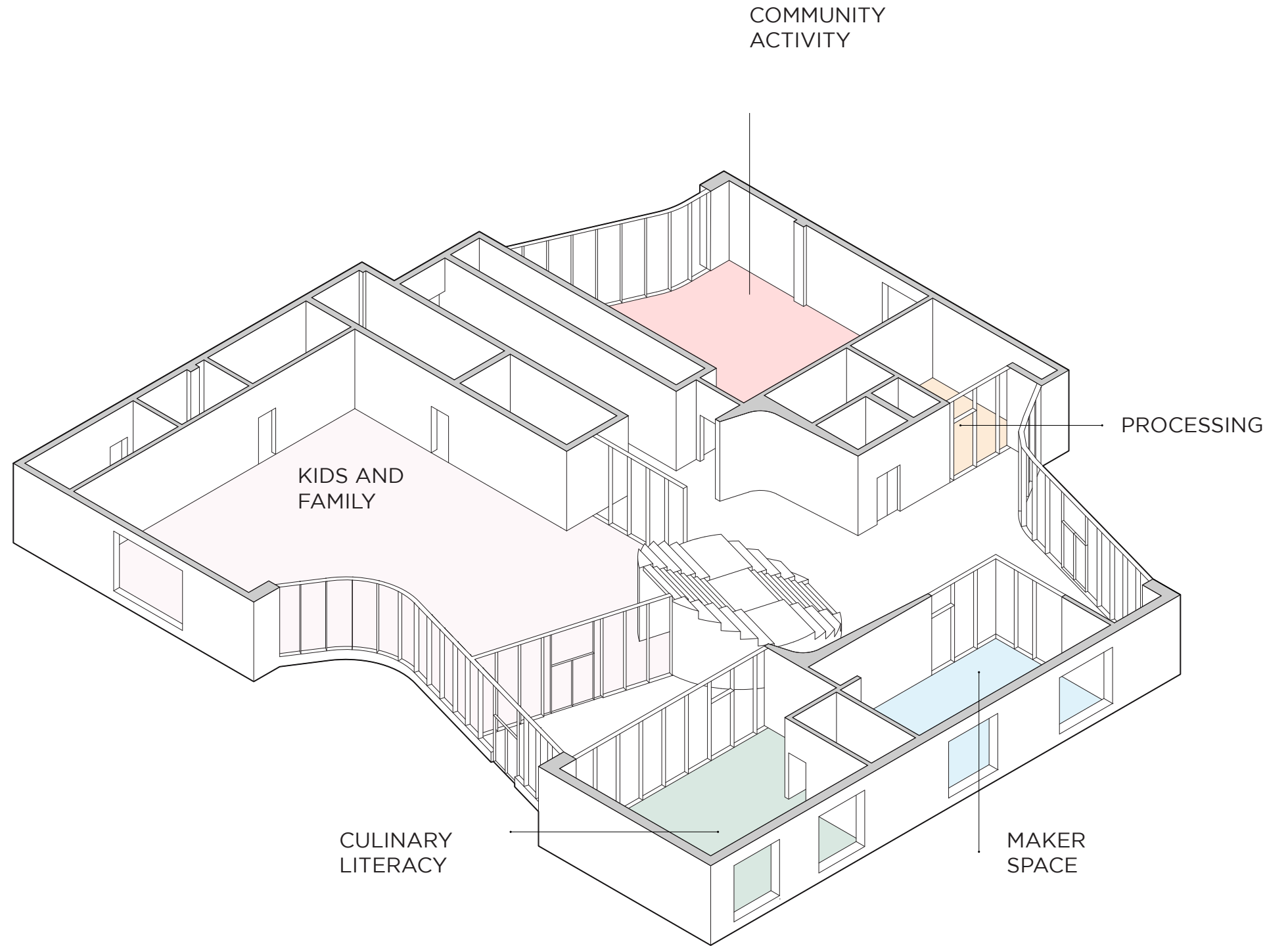
KIDS AND FAMILY

NEW BOOKS	200 PSF
TABLE SEATING	400 PSF
STORY TELLING	1,000 PSF
BOOKS	1,000 PSF
KIDS AND FAMILY STORAGE	135 PSF
KIDS' RESTROOM	50 PSF

TOTAL ENCLOSED AREA: 10,915 SF

TOTAL EXTERIOR COVERED AREA: 3,600 SF

EAST PALO ALTO LIBRARY



CONCEPTUAL COST PACKAGE
2019.05. 20

WHY

LEVEL 2 AXONOMETRIC

STAFF RESOURCE CENTER

STAFF BREAK ROOM	215 PSF
ENCLOSED OFFICE	160 PSF
OPEN OFFICE	665 PSF
REST ROOM / SHOWER	90 PSF

CABINET OF CURIOSITY

TEEN ROOM	560 PSF
TEEN STUDY ROOMS	300 PSF

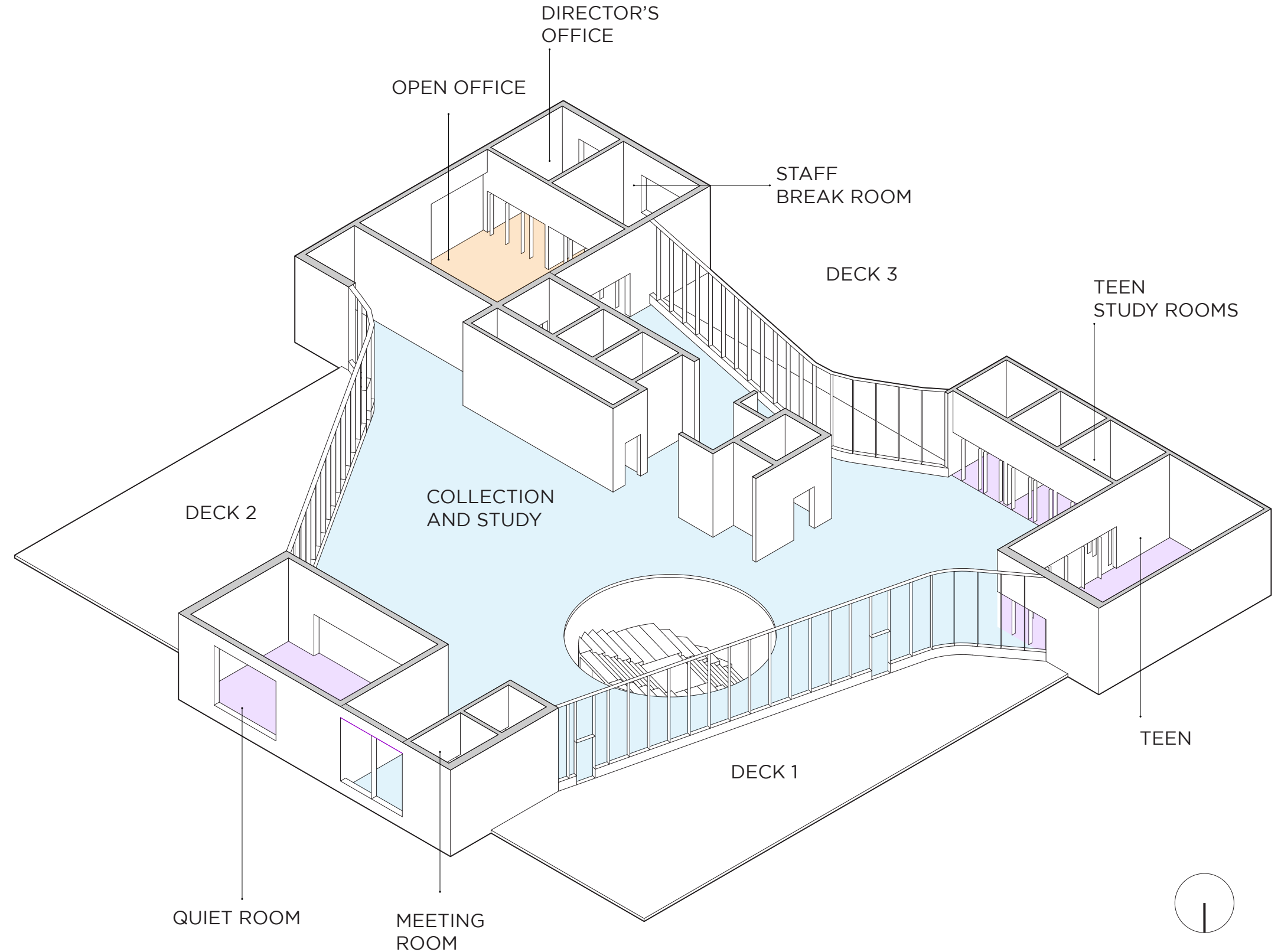
COLLECTION AND STUDY

COLLECTION	4,000 PSF
QUIET ROOM	540 PSF
GROUP STUDY ROOMS	145 PSF

TOTAL ENCLOSED AREA: 10,965 SF

TOTAL OPEN AREA: 3,955 SF

EAST PALO ALTO LIBRARY

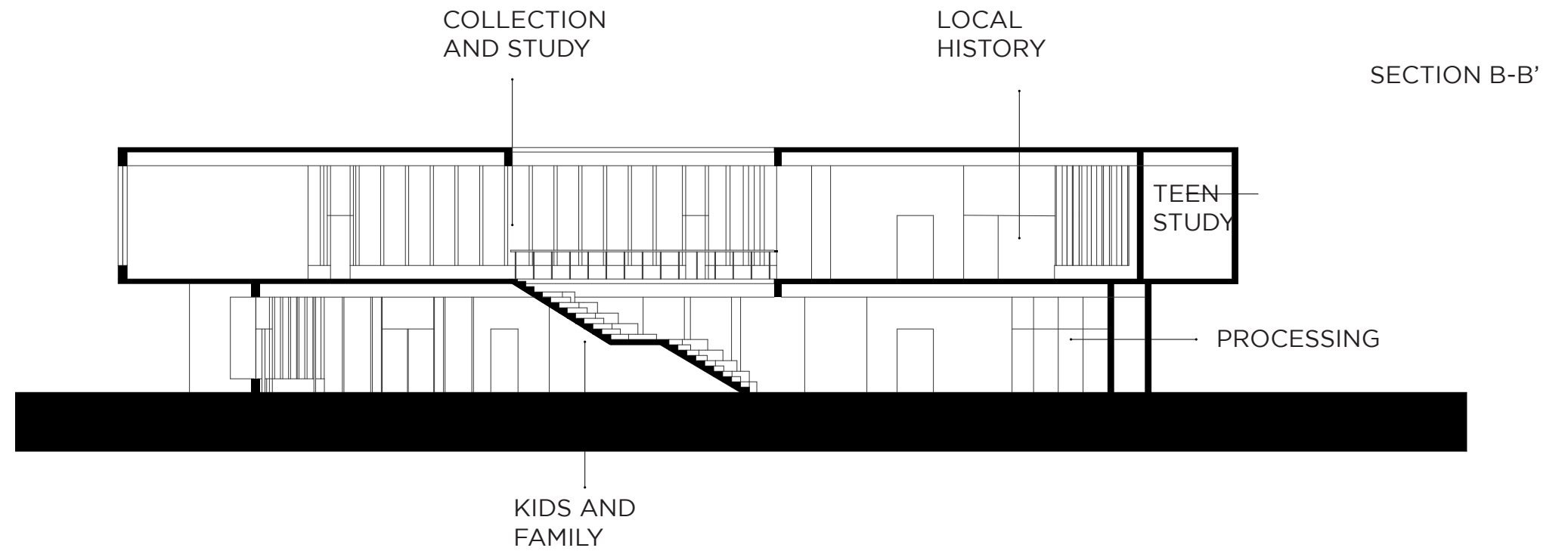
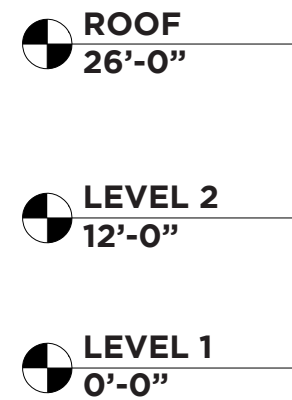
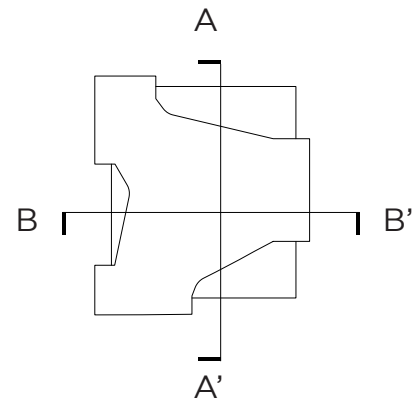
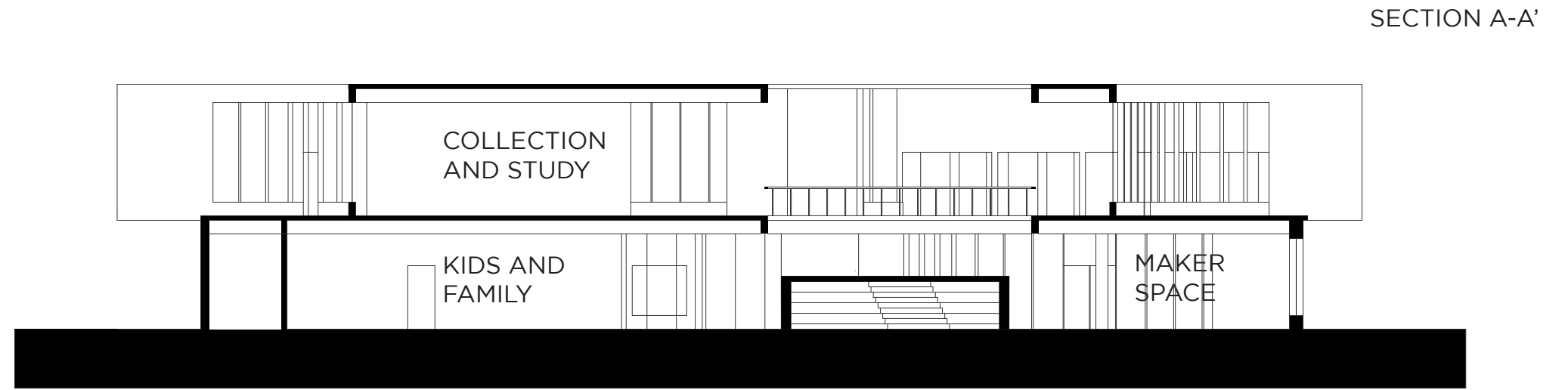
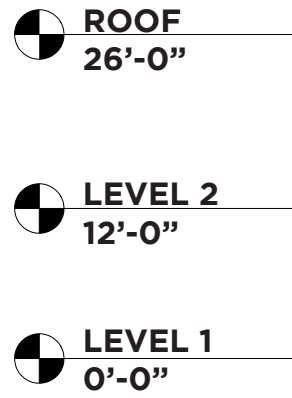


CONCEPTUAL COST PACKAGE
2019.05. 20

WHY

SECTION

1'-0" = 1/16"



KEY MAP

EAST PALO ALTO LIBRARY

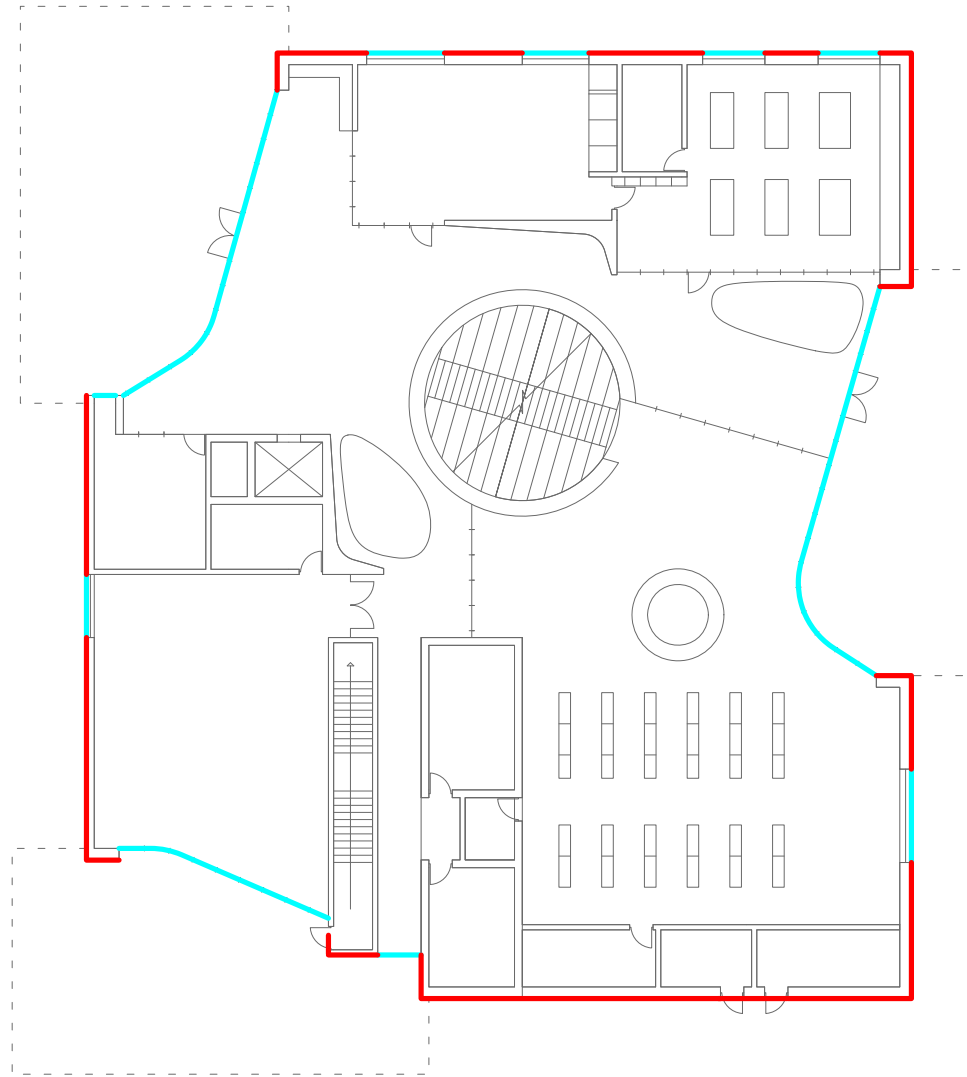
CONCEPTUAL COST PACKAGE
2019.05. 20



EXTERIOR GLAZING RATIO

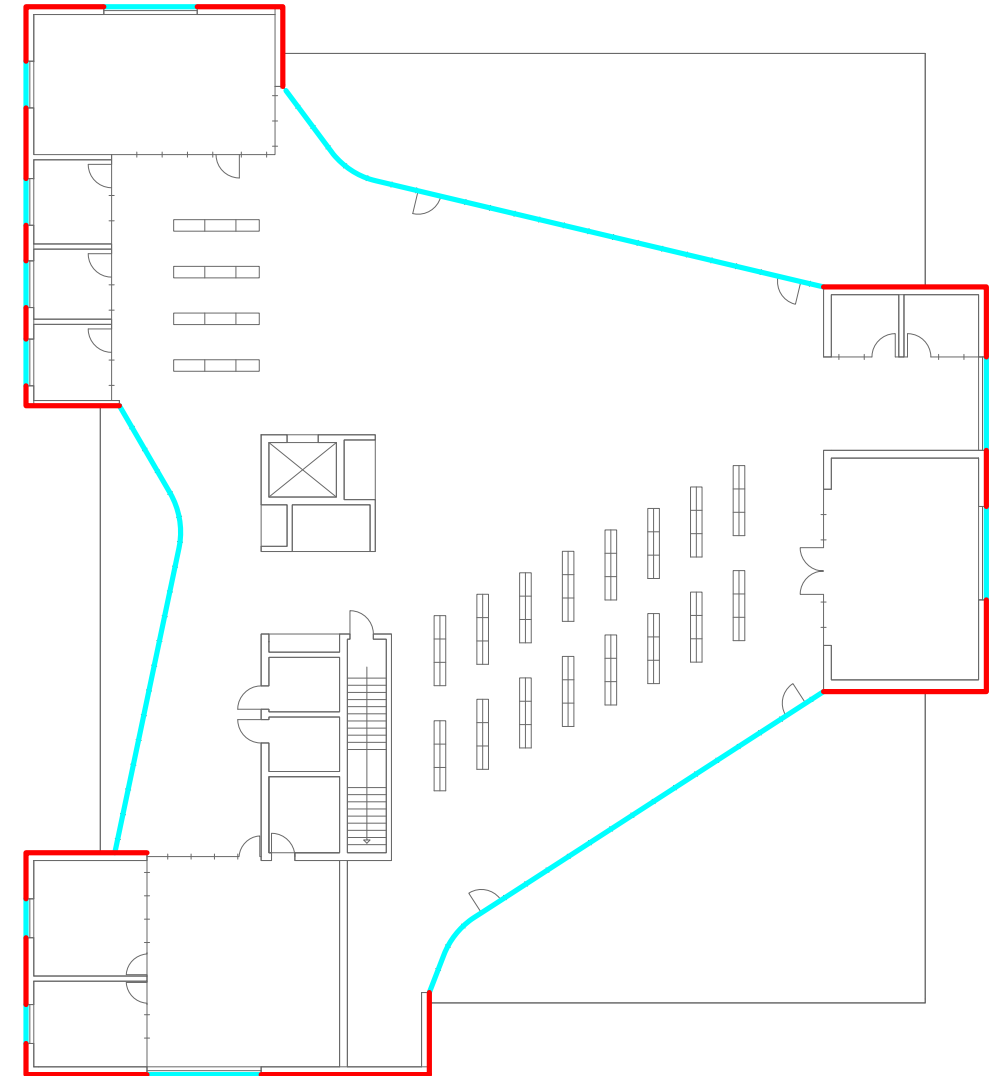
LEVEL 1
HEIGHT: 12'-0"

TOTAL LENGTH: 439 LF
SOLID: 245 LF (56%)
GLAZED: 194 LF (44%)



LEVEL 2
HEIGHT: 14'-0"

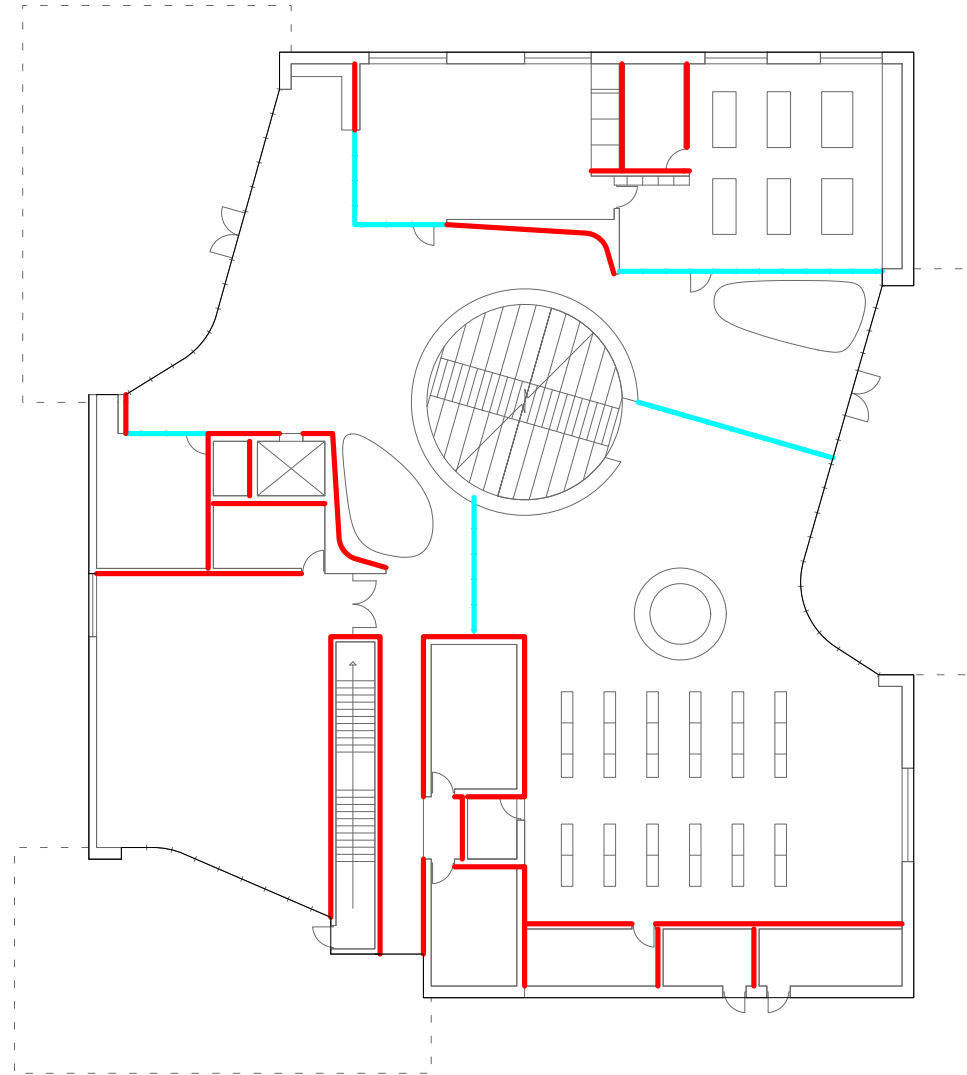
TOTAL LENGTH: 507 LF
SOLID: 222 LF (44%)
GLAZED: 285 LF (56%)



INTERIOR GLAZING RATIO

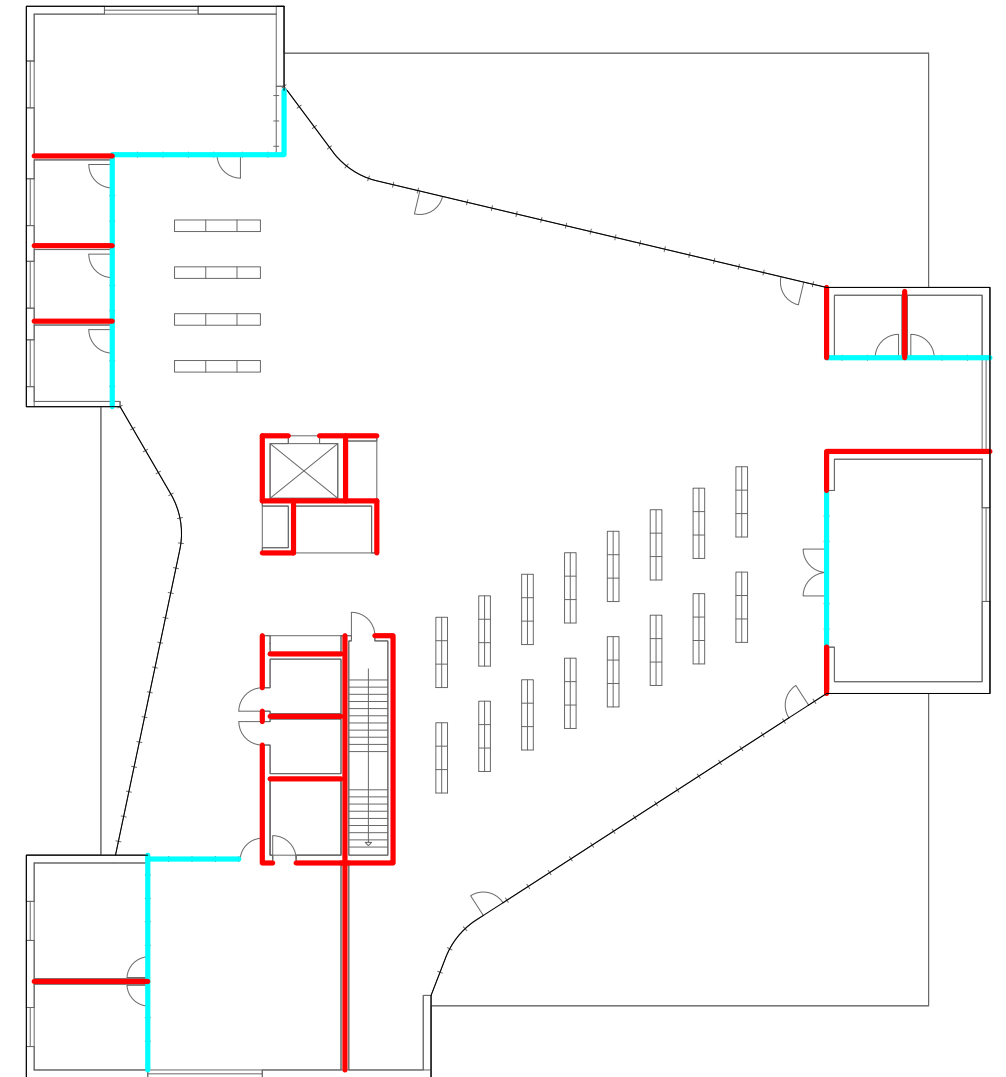
LEVEL 1
HEIGHT: 12'-0"

TOTAL LENGTH: 536 LF
SOLID: 424 LF (79%)
GLAZED: 112 LF (21%)



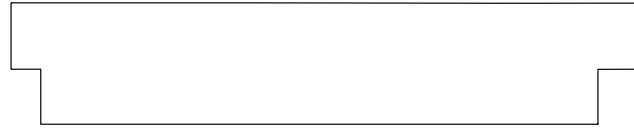
LEVEL 2
HEIGHT: 14'-0"

TOTAL LENGTH: 447 LF
SOLID: 304 LF (68%)
GLAZED: 143 LF (32%)

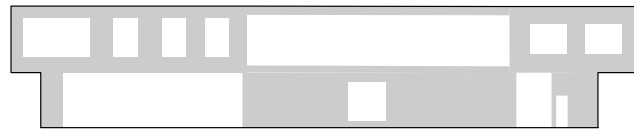


FACADE GLAZING RATIO

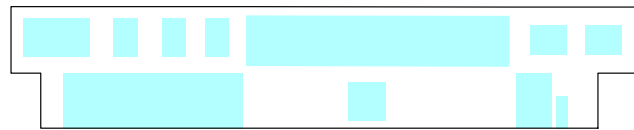
WEST FACADE AREA 3,445 GSF
 SOLID AREA 1,800 GSF
 GLAZED AREA 1,645 GSF



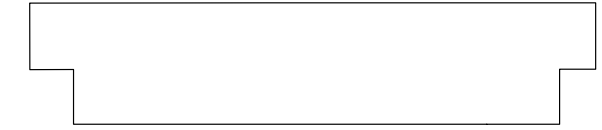
SOLID AREA (52%)



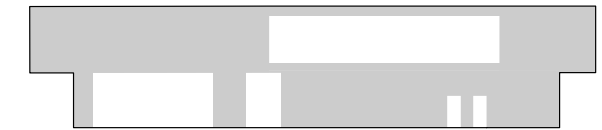
GLAZED AREA (48%)



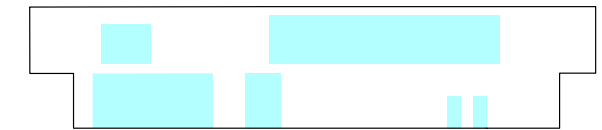
SOUTH FACADE AREA 3,060 GSF
 SOLID AREA 1,990 GSF
 GLAZED AREA 1,070 GSF



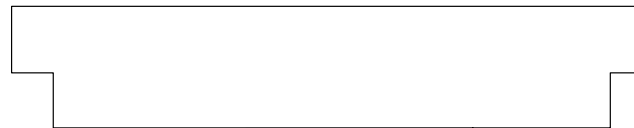
SOLID AREA (65%)



GLAZED AREA (35%)



EAST FACADE AREA 3,445 GSF
 SOLID AREA 1,826 GSF
 GLAZED AREA 1,619 GSF



SOLID AREA (53%)



GLAZED AREA (47%)



NORTH FACADE AREA 3,060 GSF
 SOLID AREA 1,656 GSF
 GLAZED AREA 1,404 GSF



SOLID AREA (54%)



GLAZED AREA (46%)



PROPOSED PROGRAM FOR A NEW EAST PALO ALTO LIBRARY

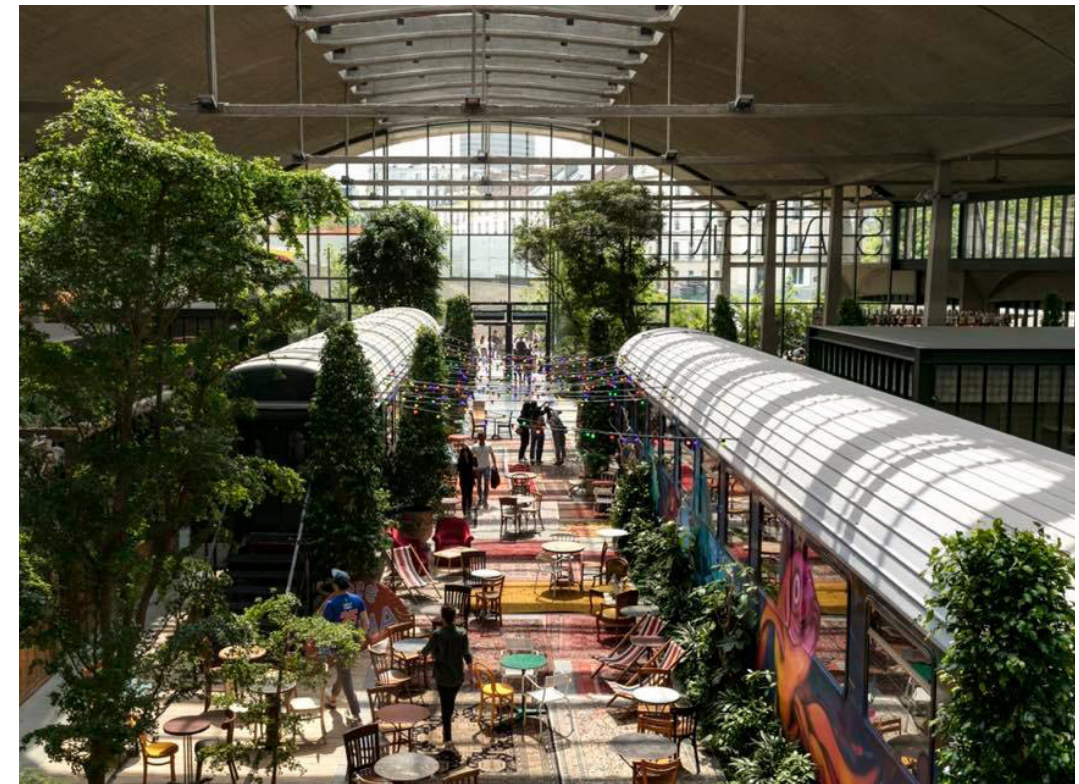
PROPOSED PROGRAM: WELCOME / ENTRY

NARRATIVE:

- Conveys a sense of welcome and a buzz of activity
- A central location from which most functions are visually or intuitively accessible
- Warm and inviting stations for greeting, information and check-out are inviting
- Seating for informal work and reading
- Ability to house large gatherings and events like readings, concerts, and open mic nights

FUNCTIONS:

- Entry / Lobby
- Concierge Stations
- Cart Cubby
- Self Check-out
- Holds
- Seating
- Restrooms



PROPOSED PROGRAM: COMMUNITY RESOURCE CENTER

NARRATIVE:

- A community hub for meeting and access to community resources
- Multi-purpose meeting room for events, presentations, meetings and classes
- Small meeting rooms for group work and community partners
- Open co-work type environment
- A community message board with upcoming events, resource information and more

FUNCTIONS:

- Medium Activity Room
- Small Activity Room
- Activity Room Storage
- Partner/Resource Rooms
- Communal Lounge



PROPOSED PROGRAM: CULINARY LITERACY CENTER

NARRATIVE:

- A nutrition, health and wellness resource for the community
- Domestic teaching kitchen for cooking and related classes
- A place to serve nutritious and tasty snacks for patrons
- Reading lounge with cooking, health, wellness, and gardening literature
- Access to a domestic demonstration garden

FUNCTIONS:

- Teaching Kitchen
- Storage
- Office
- Outdoor Seating
- Demonstration Garden



PROPOSED PROGRAM: KIDS & FAMILY AREAS

NARRATIVE:

- A place for children of all ages and family to explore, play, learn and read
- Break-out areas for storytelling, play, and various media
- Adjacent out-door space for working off energy, physical play, access to nature
- Playful elements to explore and discover, accommodating different ways of learning
- A room that grows with kids, promoting learning and exploration as fun

FUNCTIONS:

- New Books
- Table Seating
- Books
- Audio/ Visual & New Media
- Storytelling
- Storage
- Outdoor Area
- Family Restroom



PROPOSED PROGRAM: CABINET OF CURIOSITY

NARRATIVE:

- A dynamic space for learning through doing, socializing, and engaging technologies
- Visible to all who enter the library to inspire curiosity
- A 'maker space' for all ages – sewing, dj, domestic skills, digital fabrication, etc.
- A place teens can call their own for reading, socializing, and individual and group activities with access to digital and physical resources
- Access to a multitude of environments and programs through virtual means to broaden horizons
- Flexible furniture to accommodate various activities and programs

FUNCTIONS:

- Teen Room
- Maker Room
- Virtual Reality Experience Alcove
- Office
- Storage



PROPOSED PROGRAM: COLLECTIONS & STUDY

NARRATIVE:

- Large, open, naturally lit space for reading and quiet work
- Ample opportunities for independent study with comfortable seating, natural light, and power
- Flexible shelving to accommodate the evolution of the collection
- An East Palo Alto focused resource area, with the ability to house memorabilia and even record oral histories
- Workstations and laptop-check-out machines , as well as printing stations
- Private rooms for small group study and tutoring

FUNCTIONS:

- Main Space
- New Books / Media / Periodicals
- Adult Collections
- East Palo Alto History
- Reader Seating
- Public Computers
- Printing
- Study Rooms
- Literacy center
- Quiet Room
- Restrooms



PROPOSED PROGRAM: STAFF RESOURCE AREA

NARRATIVE:

- Stimulating, naturally lit work environment
- An ability to see the comings and goings of the library
- Open work spaces for permanent and temporary staff
- Wall space for sharing ideas and mapping out projects and schedules
- Privacy nook for quiet work and calls
- Easy access to book processing area

FUNCTIONS:

- Collection Processing Room
- Staff Open Office
- Enclosed Office
- Staff Break Area
- Storage
- Data / Telecom
- Staff Restroom w/Shower



PROPOSED PROGRAM: SITE & OUTDOOR AMENITIES

NARRATIVE:

- A place to connect with the outdoors and enjoy nature
- Space for larger gatherings as well as outdoor 'nooks' for solitude
- A demonstration garden for growing food
- Secure play areas for children
- Outdoor classroom and storytime area

FUNCTIONS:

- Outdoor Reading
- Outdoor Eating
- Youth Play Area
- Demonstration Garden
- Bike Racks
- Parking Spaces
- Loading



PLANTED DECKS

DECK1

SOFTSCAPE: 932 SF (50%)
 HARDSCAPE: 932 SF (50%)

DECK2

SOFTSCAPE: 1,032 SF (60%)
 HARDSCAPE: 688 SF (40%)

